

Datasheet for ABIN306927

anti-GPR68 antibody[Go to Product page](#)**1** Image

Overview

Quantity:	100 µg
Target:	GPR68
Reactivity:	Human
Host:	Rabbit
Clonality:	Polyclonal
Conjugate:	This GPR68 antibody is un-conjugated
Application:	Western Blotting (WB), Immunohistochemistry (IHC), Inhibition Assay (InhA)

Product Details

Immunogen:	Rabbits were immunized with recombinant protein derived from human OGR1 (GPR68).
Isotype:	IgG
Cross-Reactivity:	Human
Characteristics:	GPR68, Ovarian Cancer G Protein-Coupled Receptor 1, OGR1 (originally identified as GPR68) is a high-affinity receptor for sphingosylphosphorylcholine (SPC). SPC is a member of a class of bioactive lipids which regulate cellular functions. These functions include cell proliferation and growth inhibition, smooth muscle contraction and wound healing. SPC also stimulated signalling pathways that induce tyrosine phosphorylation, activate MAP kinases and protein kinase C, modify ion channel activity and increase intracellular Ca ²⁺ concentration. OGR1 is expressed in placenta, lung, liver, spleen, testis, small intestine and peripheral blood leukocytes. It is not found in thymus, ovary, colon, skeletal muscle, kidney or pancreas.
Purification:	Protein A/G Chromatography

Target Details

Target:	GPR68
Alternative Name:	OGR1/GPR68 (GPR68 Products)
UniProt:	Q15743

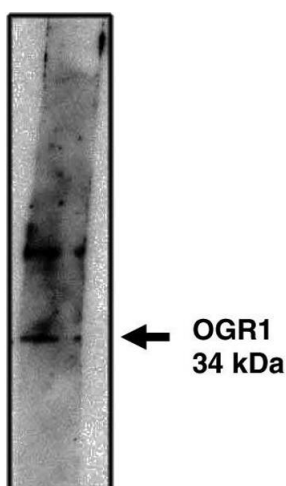
Application Details

Application Notes:	Antibody can be used for Western blotting (5-10 µg/mL). Western blot should be visualized using a high sensitivity secondary/substrate system (i.e. Pierce's SuperSignal West Femto Maximum Sensitivity Substrate). Optimal concentration should be evaluated by serial dilutions.
Restrictions:	For Research Use only

Handling

Buffer:	Provided as solution in phosphate buffered saline with 0.08 % sodium azide
Preservative:	Sodium azide
Precaution of Use:	This product contains Sodium azide: a POISONOUS AND HAZARDOUS SUBSTANCE which should be handled by trained staff only.
Storage:	-20 °C
Storage Comment:	Product should be stored at -20°C. Aliquot to avoid freeze/thaw cycles

Images



Western Blotting

Image 1. Western blot analysis using OGR1 antibody on cells transfected with OGR1 protein at 10 µg/ml. Blot developed using Pierce's SuperSignal West Femto Maximum Sensitivity Substrate.