

Datasheet for ABIN306963  
**anti-NPDC1 antibody**



[Go to Product page](#)

1 Image

## Overview

Quantity:	100 µg
Target:	NPDC1
Reactivity:	Human
Host:	Mouse
Clonality:	Monoclonal
Conjugate:	This NPDC1 antibody is un-conjugated
Application:	Western Blotting (WB)

## Product Details

Immunogen:	Hybridoma produced by the fusion of splenocytes from mice immunized with a synthetic peptide SLGSPVSSDPVHMS derived from human NPDC-1 protein (Gene ID: 56654) and mouse myeloma cells.
Clone:	16E4
Isotype:	IgG1
Specificity:	Monoclonal Anti-NPDC-1 (mouse IgG1 isotype) is derived from the hybridoma 16E4 produced by immunizing mice with the peptide SLGSPVSSDPVHMS (Gene ID: 56654).
Cross-Reactivity:	Human, Mouse, Rat
Characteristics:	The discovery of NPDC-1 (neuronal proliferation, differentiation and control protein 1) was the result of a study of genes that were preferentially expressed in immortalized neural precursor cell lines at the onset of contact inhibition of proliferation and subsequent differentiation. It was further found that transfection of transformed cells with NPDC-1 led to increased doubling

## Product Details

---

times and suppression of many characteristics of transformation. NPDC-1 is differentially expressed in brain and lung and has been shown to interact directly with the transcription factor E2F-1 as well as D-type cyclins and cdk2. NPDC-1 has been identified as a modulator of transcriptional events mediated by retinoic acid and the protein level and activity of NPDC-1 have been shown to be regulated by phosphorylation mediated proteasomal degradation.

Purification: Ion-exchange chromatography

## Target Details

---

Target: NPDC1

Alternative Name: NPDC-1 ([NPDC1 Products](#))

UniProt: [Q8WXX4](#)

## Application Details

---

Application Notes: Antibody can be used for Western blotting (1:1000 dilution). Optimal concentration should be evaluated by serial dilutions. Monoclonal Anti-NPDC-1 recognizes human NPDC-1 by immunoblotting (34-40 kDa).

Restrictions: For Research Use only

## Handling

---

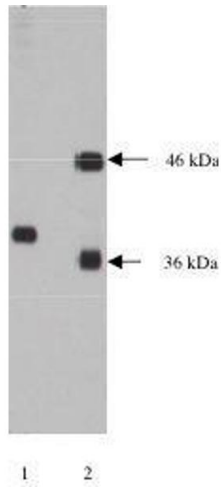
Buffer: 20 mM sodium phosphate, 150 mM sodium chloride, 50 % glycerol, pH 7.5, 3 mM sodium azide

Preservative: Sodium azide

Precaution of Use: This product contains Sodium azide: a POISONOUS AND HAZARDOUS SUBSTANCE which should be handled by trained staff only.

Storage: -20 °C

Storage Comment: Product should be stored at -20°C. Aliquot to avoid freeze/thaw cycles



### Western Blotting

**Image 1.** Lane 1. Western blot using anti- NPDC-1 on 10  $\mu$ g lysate transfected with NPDC-1 protein at a dilution of 1  $\mu$ g/ml, detected with Supersignal West Pico Substrate, 15 second exposure. Lane 2 probed with anti-Rem and anti-alpha SNAP antibodies.