

Datasheet for ABIN307110 **anti-CYP2A6 antibody (C-Term)**

2 Images



[Go to Product page](#)

Overview

Quantity:	200 µg
Target:	CYP2A6
Binding Specificity:	C-Term
Reactivity:	Human
Host:	Mouse
Clonality:	Monoclonal
Conjugate:	This CYP2A6 antibody is un-conjugated
Application:	Western Blotting (WB), ELISA, Immunohistochemistry (IHC), Immunohistochemistry (Paraffin-embedded Sections) (IHC (p)), Immunohistochemistry (Frozen Sections) (IHC (fro))

Product Details

Immunogen:	Hybridoma produced by the fusion of splenocytes from BALB/c mice immunized with Synthetic peptide conjugated to ovalbumin derived from the C-terminus of CYP2A6 and mouse myeloma Ag8563 cells. Antigen identical in CYP2A6, 2A7 and 2A13.
Clone:	F16 P2 D8
Isotype:	IgG1
Cross-Reactivity:	Human
Characteristics:	CYP2A6, CYP450 2A6 (EC 1.14.14.1), CYP11A6, Coumarin 7-hydroxylase, The cytochrome P450 proteins (CYPs) are monooxygenases that catalyze many reactions involved in drug metabolism and synthesis of cholesterol, steroids and other lipids. P450 enzymes are classified into subfamilies based on their sequence similarities. CYP2A6 is a liver enzyme that

Product Details

metabolizes a number of drugs and a variety of procarcinogens, though it is primarily responsible for the metabolism of nicotine, the major addictive agent in tobacco. CYP2A6 inactivates nicotine to cotinine, and then cotinine to 3-hydroxycotinine. Differences in CYP2A6 genotypes are related to nicotine dependence, and may influence smoking habits and withdrawal symptoms in individuals that are quitting smoking. This suggests that an individualized smoking cessation program may be designed based on CYP2A6 genotypes.

Purification: Protein A/G Chromatography

Target Details

Target: CYP2A6

Alternative Name: Cytochrome P450 2A6 ([CYP2A6 Products](#))

UniProt: [P05177](#)

Application Details

Application Notes: Antibody can be used for Western blotting (1-2 µg/mL), immunofluorescence and immunohistochemistry (formalin-fixed, paraffin-embedded tissues). ELISA titer to be determined by end-user. Optimal concentration should be evaluated by serial dilutions.

Restrictions: For Research Use only

Handling

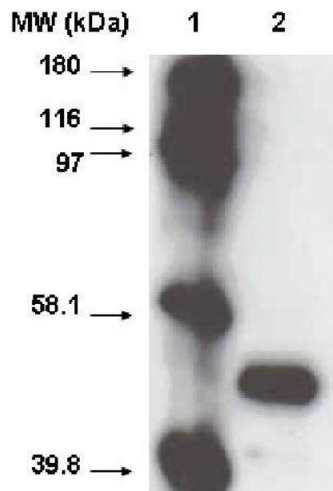
Buffer: Provided as solution in phosphate buffered saline with 0.08 % sodium azide

Preservative: Sodium azide

Precaution of Use: This product contains Sodium azide: a POISONOUS AND HAZARDOUS SUBSTANCE which should be handled by trained staff only.

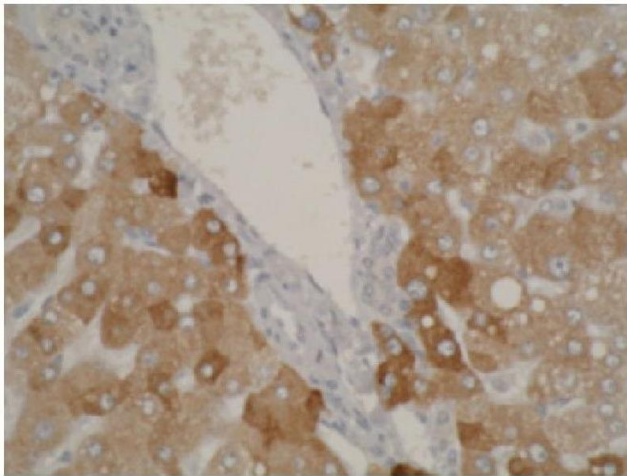
Storage: -20 °C

Storage Comment: Product should be stored at -20°C. Aliquot to avoid freeze/thaw cycles



Western Blotting

Image 1. Western blot using CYP2A6 antibody on recombinant cytochrome p450 at 1 µg/ml.



Immunohistochemistry

Image 2. Staining using CYP2A6 antibody on normal human liver tissue at 1 µg/ml.