

## Datasheet for ABIN307113 **anti-CYP3A7 antibody (C-Term)**

### 2 Images



[Go to Product page](#)

### Overview

Quantity:	200 µg
Target:	CYP3A7
Binding Specificity:	C-Term
Reactivity:	Human
Host:	Mouse
Clonality:	Monoclonal
Conjugate:	This CYP3A7 antibody is un-conjugated
Application:	Western Blotting (WB), ELISA, Immunohistochemistry (IHC)

### Product Details

Immunogen:	Hybridoma produced by the fusion of splenocytes from BALB/c mice immunized with a synthetic peptide derived from the C-terminus of the human CYP3A7 protein and mouse myeloma Ag8563 cells.
Clone:	F19 P2 H2
Isotype:	IgG1
Cross-Reactivity:	Human
Characteristics:	CYP3A7, CYP450 3A7 (EC 1.14.14.1), CYP11A7, P450-HFLA, CYP3A genes encode monooxygenases, enzymes which catalyze drug metabolism and the synthesis of cholesterol, steroids and other lipids. CYP3A (cytochrome P450, family 3, subfamily A), the most abundant P450 enzyme in human liver, is responsible for the metabolism of more than 50 % of all clinical drugs. CYP3A members localize in organs that associate with drug disposition, including the

## Product Details

---

liver, gastrointestinal tract and kidney. The CYP3A cluster consists of four genes: CYP3A43, CYP3A4, CYP3A7 and CYP3A5, and two pseudogenes: CYP3A5P1 and CYP3A5P2. The CYP3A cluster maps to gene locus 7q21.3-q22.1.

Purification: Protein A/G Chromatography

## Target Details

---

Target: CYP3A7

Alternative Name: Cytochrome P450 3A7 ([CYP3A7 Products](#))

UniProt: [Q9H241](#)

Pathways: [Steroid Hormone Biosynthesis](#)

## Application Details

---

Application Notes: Antibody can be used for Western blotting (1-2 µg/mL) and immunohistochemistry on formalin-fixed, paraffin-embedded tissue sections (1-5 µg/mL). When used in conjunction with CYP3A5 (Cat. No. X2047M), can differentiate between the CYP3A family members, 3A5 and 3A7. Optimal concentration should be evaluated by serial dilutions.

Restrictions: For Research Use only

## Handling

---

Buffer: Provided as solution in phosphate buffered saline with 0.08 % sodium azide

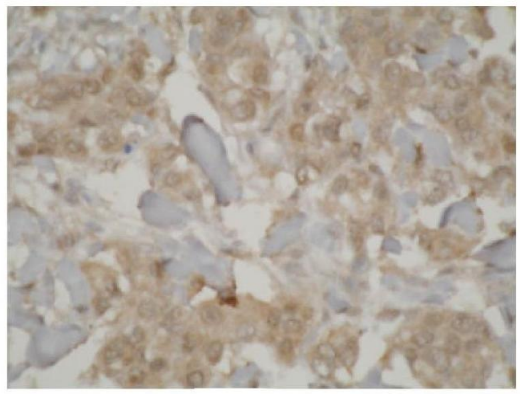
Preservative: Sodium azide

Precaution of Use: This product contains Sodium azide: a POISONOUS AND HAZARDOUS SUBSTANCE which should be handled by trained staff only.

Storage: -20 °C

Storage Comment: Product should be stored at -20°C. Aliquot to avoid freeze/thaw cycles

B.

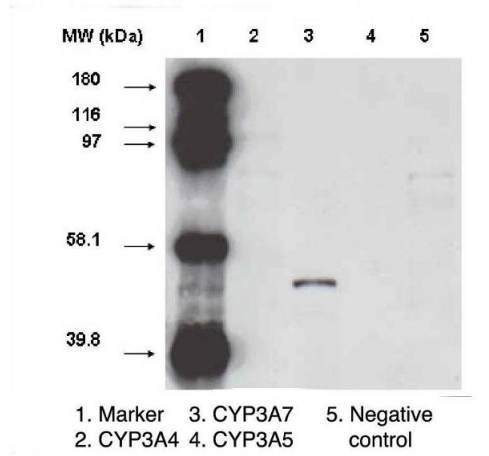


Immunohistochemistry of prostate cancer

### Immunohistochemistry

**Image 1.** Immunohistochemistry staining of prostate cancer tissue using CYP3A7 antibody.

A.



### Western Blotting

**Image 2.** Western blot analysis using CYP3A7 antibody on various recombinant CYP450 proteins.