

Datasheet for ABIN307115 **anti-CYP4F11 antibody (C-Term)**

2 Images



[Go to Product page](#)

Overview

Quantity:	200 µg
Target:	CYP4F11
Binding Specificity:	C-Term
Reactivity:	Human
Host:	Mouse
Clonality:	Monoclonal
Conjugate:	This CYP4F11 antibody is un-conjugated
Application:	Western Blotting (WB), ELISA, Immunohistochemistry (IHC)

Product Details

Immunogen:	Hybridoma produced by the fusion of splenocytes from BALB/c mice immunized with a synthetic peptide derived from the C-terminus of the human CYP450 4F11 protein and mouse myeloma Ag8563 cells.
Clone:	F21 P6 F5
Isotype:	IgG1
Cross-Reactivity:	Human
Characteristics:	CYP11B1, EC 1.14.14.1, The cytochrome P450 proteins (CYPs) are monooxygenases that catalyze many reactions involved in drug metabolism and synthesis of cholesterol, steroids and other lipids. P450 enzymes are classified into subfamilies based on their sequence similarities. CYP4F11 is an isoform of the cytochrome P450 4F protein and is expressed mainly in human liver, followed by kidney, heart, and skeletal muscle. CYP4F11 contains 524 amino acid residues

Product Details

that share 80.0, 82.3 and 79.2 % identity to CYP4F2, CYP4F3, and CYP4F8 amino acid sequences, respectively. CYP4F11 has catalytic properties towards endogenous eicosanoids as well as some clinically relevant drugs, and is able to metabolize large molecules such as erythromycin.

Purification: Protein A/G Chromatography

Target Details

Target: CYP4F11

Alternative Name: Cytochrome P450 4F11 ([CYP4F11 Products](#))

Pathways: [Monocarboxylic Acid Catabolic Process](#)

Application Details

Application Notes: Antibody can be used for Western blotting (1-2 µg/mL) and immunohistochemistry on formalin-fixed, paraffin-embedded tissues (1-5 µg/mL). Optimal concentration should be evaluated by serial dilutions. For optimal results, formalin fixed, paraffin embedded tissues need an antigen retrieval by heat treatment in citrate buffer pH 6.

Restrictions: For Research Use only

Handling

Buffer: Provided as solution in phosphate buffered saline with 0.08 % sodium azide

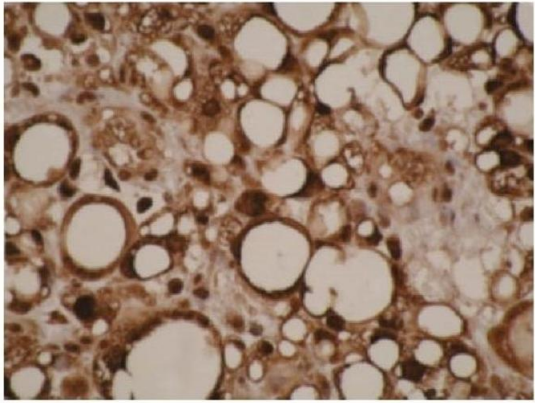
Preservative: Sodium azide

Precaution of Use: This product contains Sodium azide: a POISONOUS AND HAZARDOUS SUBSTANCE which should be handled by trained staff only.

Storage: -20 °C

Storage Comment: Product should be stored at -20°C. Aliquot to avoid freeze/thaw cycles

A.

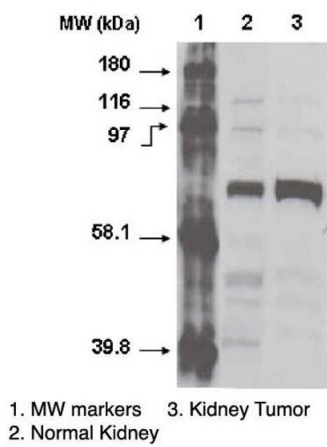


Immunohistochemistry expression in Liposarcoma Cells

Immunohistochemistry

Image 1. Immunohistochemical staining of human liposarcoma cells using CYP4F11 antibody .

B.



Western Blotting

Image 2. Western blot using CYP4F11 antibody one normal (2) and cancerous (3) kidney cell lysates.