



[Go to Product page](#)

Datasheet for ABIN307125
anti-CCT8L2 antibody (C-Term)

1 Image

Overview

Quantity:	200 µg
Target:	CCT8L2
Binding Specificity:	C-Term
Reactivity:	Human
Host:	Mouse
Clonality:	Monoclonal
Conjugate:	This CCT8L2 antibody is un-conjugated
Application:	Western Blotting (WB), Immunohistochemistry (IHC)

Product Details

Immunogen:	Hybridoma produced by the fusion of splenocytes from BALB/c mice immunized with a synthetic peptide derived from the C-terminal of the TCP-1 protein and mouse myeloma Ag8563 cells. Sequence common in human, frog, mouse, rat
Clone:	F39 P7 F11
Isotype:	IgG2a
Cross-Reactivity:	Frog, Human, Mouse, Rat
Characteristics:	TCP-1b, Chaperonin containing TCP1, subunit 2 (beta), CCT-beta, CCTB, The protein TCP-1 (t-complex polypeptide 1) is a subunit of the hetero-oligomeric complex CCT (chaperonin containing TCP-1) present in the eukaryotic cytosol. The CCT of eukaryotic cytosol is composed of eight different subunit species that are proposed to have independent functions in folding its in vivo substrates, the Actins and Tubulins. TCP-1 was first identified in the mouse

Product Details

as relevant for tail-less and embryonic lethal phenotypes. Sequences homologous to TCP-1 have been isolated in several other species, and the yeast TCP-1 has been shown to encode a molecular chaperone for Actin and Tubulin. TCP-1 found in mammalian cells and yeast plays an important role in the folding of cytosolic proteins.

Purification: Protein A/G Chromatography

Target Details

Target: CCT8L2

Alternative Name: T-Complex Protein 1 ([CCT8L2 Products](#))

UniProt: [P47207](#)

Application Details

Application Notes: Antibody can be used for Western blotting (1-2 µg/mL) and immunohistochemistry on formalin-fixed, paraffin-embedded tissue sections (1-5 µg/mL). Optimal concentration should be evaluated by serial dilutions.

Restrictions: For Research Use only

Handling

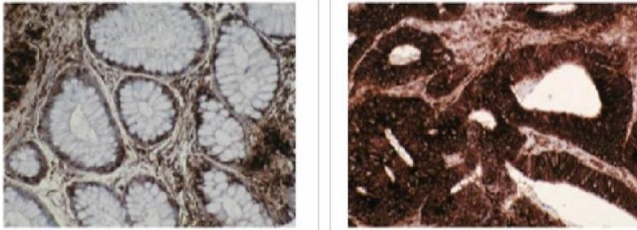
Buffer: Provided as solution in phosphate buffered saline with 0.08 % sodium azide

Preservative: Sodium azide

Precaution of Use: This product contains Sodium azide: a POISONOUS AND HAZARDOUS SUBSTANCE which should be handled by trained staff only.

Storage: -20 °C

Storage Comment: Product should be stored at -20°C. Aliquot to avoid freeze/thaw cycles



Immunohistochemistry

Image 1. Immunohistochemical staining of normal (left) and cancerous (center) colon tissue using TCP-1 β antibody