

Datasheet for ABIN307128

anti-TXK antibody**1** Image[Go to Product page](#)

Overview

Quantity:	200 µg
Target:	TXK
Reactivity:	Human
Host:	Mouse
Clonality:	Monoclonal
Conjugate:	This TXK antibody is un-conjugated
Application:	Western Blotting (WB)

Product Details

Immunogen:	Hybridoma produced by the fusion of splenocytes from BALB/c mice immunized with a synthetic peptide derived from the human RYK protein and mouse myeloma Ag8563 cells. Sequence common in human, mouse and rat.
Clone:	F35 P7 D7 F5
Isotype:	IgG1
Cross-Reactivity:	Human, Mouse, Rat
Characteristics:	RYK1, Hydroxyaryl-Protein Kinase,RYK (Receptor like Tyrosine kinase 1) is in the Tyrosine family of receptor kinases. It is found in the plasma membrane of heart, prostate and kidney cells. RYK contains 604 amino acids and it contains one WIF domain. It functions as a potential growth factor receptor protein tyrosine kinase. RYK are divergent from those of other classic receptor tyrosine kinases. It is an orphan receptor that contains a catalytically inactive tyrosine kinase related domain. RYK is expressed in nestin positive progenitor cells and neurons, and in

Product Details

a certain population of oligodendrocytes, O2A progenitor cells, and type 2 astrocytes in developing CNS.

Purification: Protein A/G Chromatography

Target Details

Target: TXK

Alternative Name: Receptor-Like Tyrosine Kinase ([TXK Products](#))

Pathways: [Regulation of Leukocyte Mediated Immunity](#), [Hepatitis C](#)

Application Details

Application Notes: Antibody can be used for Western blotting (1-5 µg/mL). Optimal concentration should be evaluated by serial dilutions.

Restrictions: For Research Use only

Handling

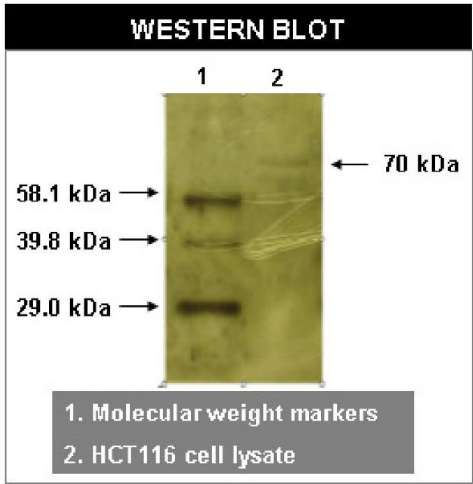
Buffer: Provided as solution in phosphate buffered saline with 0.08 % sodium azide

Preservative: Sodium azide

Precaution of Use: This product contains Sodium azide: a POISONOUS AND HAZARDOUS SUBSTANCE which should be handled by trained staff only.

Storage: -20 °C

Storage Comment: Product should be stored at -20°C. Aliquot to avoid freeze/thaw cycles



Western Blotting

Image 1. Western blot using RYK antibody on HCT116 cell lysates.