



[Go to Product page](#)

Datasheet for ABIN3071462

## GDNF Protein (AA 78-177) (GST tag)

### 1 Image

#### Overview

Quantity:	2 µg
Target:	GDNF
Protein Characteristics:	AA 78-177
Origin:	Human
Source:	Wheat germ
Protein Type:	Recombinant
Purification tag / Conjugate:	This GDNF protein is labelled with GST tag.
Application:	Western Blotting (WB), ELISA, Affinity Purification (AP), Antibody Array (AA)

#### Product Details

Purpose:	GDNF (Human) Recombinant Protein (Q01)
Sequence:	SPDKQMAVLVLP RRERNRQAAA ANPENSRGKG RRGQRGKNRG CVLTAIHLNV TDGLGLGYETK EELIFRYCSG SCDAAEETTYD KILKNLSRNR RLVSDKVGQA
Characteristics:	Human GDNF partial ORF ( NP_000505, 78 a.a. - 177 a.a.) recombinant protein with GST-tag at N-terminal.
Purification:	in vitro wheat germ expression system

#### Target Details

Target:	GDNF
Alternative Name:	GDNF ( <a href="#">GDNF Products</a> )

## Target Details

Background:	Full Gene Name: glial cell derived neurotrophic factor Synonyms: ATF1,ATF2,HFB1-GDNF
Gene ID:	2668
NCBI Accession:	<a href="#">NM_000514</a>
Pathways:	<a href="#">RTK Signaling</a> , <a href="#">Synaptic Membrane</a> , <a href="#">Tube Formation</a> , <a href="#">Autophagy</a> , <a href="#">Smooth Muscle Cell Migration</a>

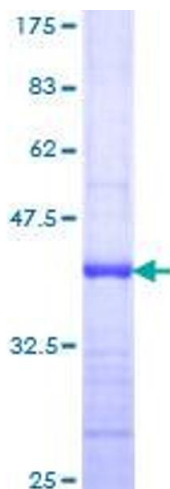
## Application Details

Application Notes:	Optimal working dilution should be determined by the investigator.
Comment:	Preparation method: in vitro, wheat germ expression system Product Quality tested by: 12.5% SDS-PAGE Stained with Coomassie Blue.
Restrictions:	For Research Use only

## Handling

Buffer:	50 mM Tris-HCl, 10 mM reduced Glutathione, pH =8.0 in the elution buffer.
Handling Advice:	Aliquot to avoid repeated freezing and thawing.
Storage:	-80 °C
Storage Comment:	Best use within three months from the date of receipt of this protein.

## Images



**Image 1.**