

Datasheet for ABIN307178
anti-PRKG1 antibody (AA 657-671)

2 Images

[Go to Product page](#)

Overview

Quantity:	50 µg
Target:	PRKG1
Binding Specificity:	AA 657-671
Reactivity:	Human, Mouse, Rat, Pig, Cow, Bat, Chicken, Dog, Horse, Monkey, Rabbit
Host:	Rabbit
Clonality:	Polyclonal
Conjugate:	This PRKG1 antibody is un-conjugated
Application:	Western Blotting (WB), Immunohistochemistry (IHC), Immunohistochemistry (Paraffin-embedded Sections) (IHC (p))

Product Details

Brand:	IHC-plus™
Immunogen:	<p>A 15 residue synthetic peptide DEPPPDDNSGWDIDF based on the human PKG 1alpha (residues 657-671) and the peptide coupled to KLH. Percent identity by BLAST analysis: Human, Gibbon, Monkey, Marmoset, Mouse, Rat, Elephant, Panda, Dog, Bat, Bovine, Horse, Rabbit, Pig, Opossum, Turkey, Chicken, Platypus (100%), Pufferfish (93%), Xenopus, Zebrafish (87%), Stickleback, Medaka, Seq squirt, Mosquito, Ant, Beetle (80%).</p> <p>Type of Immunogen: Synthetic peptide - KLH conjugated</p>
Isotype:	IgG
Specificity:	Recognizes human PKG1 alpha at ~75kD.

Product Details

Predicted Reactivity: Percent identity by BLAST analysis: Human, Gibbon, Monkey, Marmoset, Mouse, Rat, Elephant, Panda, Dog, Bat, Bovine, Horse, Rabbit, Pig, Opossum, Turkey, Chicken, Platypus (100%) Pufferfish (93%) Xenopus, Zebrafish (87%) Stickleback, Medaka, Seq squirt, Mosquito, Ant, Beetle (80%).

Purification: Protein A purified

Target Details

Target: PRKG1

Alternative Name: PKG / PRKG1 ([PRKG1 Products](#))

Background: Name/Gene ID: PRKG1
Subfamily: CGMP
Family: Protein Kinase

Synonyms: PRKG1, CGKI, CGMP kinase I, CGMP protein kinase type I, CGK-I, CGK1, PKGI, PKG I, PRKGR1B, PRKG1B, PRKGR1A, PGK, PKG, CGK, CGK 1, CGKI-alpha, CGKI-BETA

Gene ID: 5592

UniProt: [Q13976](#)

Application Details

Application Notes: Approved: IHC, IHC-P (10 µg/mL), WB (1 µg/mL)

Usage: Immunohistochemistry: This antibody was validated for use in immunohistochemistry on a panel of 21 formalin-fixed, paraffin-embedded (FFPE) human tissues after heat induced antigen retrieval in pH 6.0 citrate buffer. After incubation with the primary antibody, slides were incubated with biotinylated secondary antibody, followed by alkaline phosphatase-streptavidin and chromogen. The stained slides were evaluated by a pathologist to confirm staining specificity. The optimal working concentration for this antibody was determined to be 10 µg/mL. Western Blot: Positive control: Mouse Brain Tissue Extract, Rat Brain Tissue Extract.

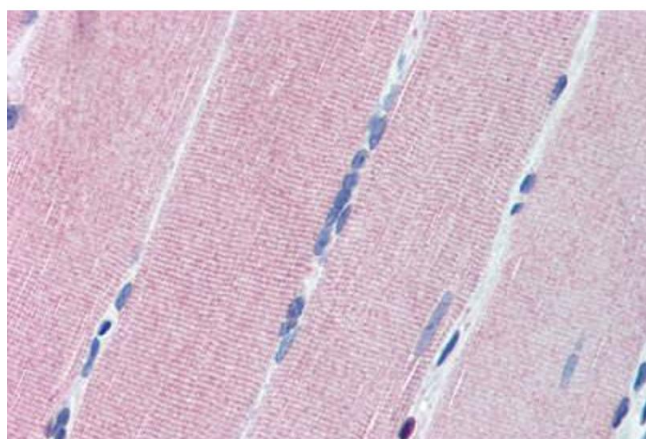
Comment: Target Species of Antibody: Human

Restrictions: For Research Use only

Handling

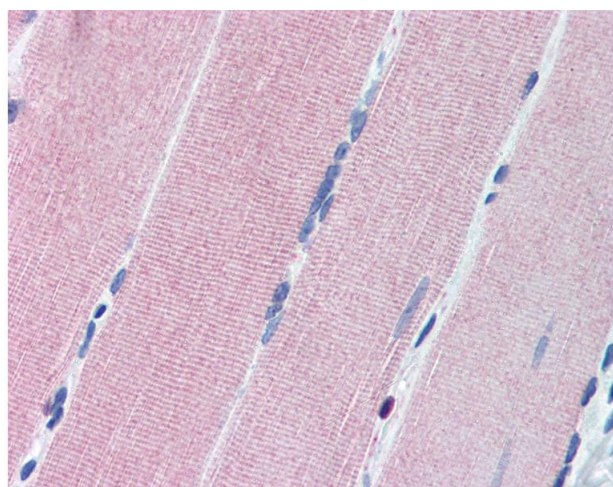
Format:	Liquid
Concentration:	Lot specific
Buffer:	PBS, pH 7.2, 50 % glycerol, 0.09 % azide.
Preservative:	Sodium azide
Precaution of Use:	This product contains Sodium azide: a POISONOUS AND HAZARDOUS SUBSTANCE which should be handled by trained staff only.
Handling Advice:	Avoid repeat freeze-thaw cycles.
Storage:	4 °C, -20 °C
Storage Comment:	Short term: 4°C. Long term: Store at -20°C. Avoid freeze-thaw cycles.

Images



Immunohistochemistry (Paraffin-embedded Sections)

Image 1. Human Skeletal Muscle (formalin-fixed, paraffin-embedded) stained with PRKG1 antibody ABIN307178 at 10 ug/ml followed by biotinylated goat anti-rabbit IgG secondary antibody ABIN481713, alkaline phosphatase-streptavidin and chromogen.



Immunohistochemistry

Image 2. Anti-PRKG1 / CGKI antibody IHC of human skeletal muscle. Immunohistochemistry of formalin-fixed, paraffin-embedded tissue after heat-induced antigen retrieval. Antibody concentration 10 ug/ml.