

Datasheet for ABIN3071794  
**anti-CD235a/GYPA antibody (FITC)**



[Go to Product page](#)

1 Image

## Overview

Quantity:	100 µg
Target:	CD235a/GYPA (GYPA)
Reactivity:	Human
Host:	Mouse
Clonality:	Monoclonal
Conjugate:	This CD235a/GYPA antibody is conjugated to FITC
Application:	Flow Cytometry (FACS)

## Product Details

Purpose:	CD235a FITC Antibody
Immunogen:	Recombinant human glycophorin A protein
Clone:	GYPA280
Isotype:	IgG1, kappa
Characteristics:	CD235a recognises a 39 kd sialoglycoprotein identified as glycophorin A. It is abundantly expressed on red blood cells and erythroid precursor cells. It has been shown that glycophorin acts on the erythrocyte binding antigen (EBA-175) of <i>P. falciparum</i> as well as the receptor for Sande virus, parvovirus, influenza virus and hepatitis A virus. Two types of glycoproteins are identified and classified as glycophorin A (GPA) and glycophorin B (GPB). Both are trans-membrane sialoglycoproteins. GPA is the carrier of M and N antigens specific blood group whereas GPB is for the S and U specificities.
Purification:	Purified

## Product Details

Purity: >95 %

Grade: GMP Grade

## Target Details

Target: CD235a/GYPA (GYPA)

Alternative Name: CD235a ([GYPA Products](#))

Gene ID: 2993

UniProt: [P02724](#)

Pathways: [Maintenance of Protein Location](#)

## Application Details

Application Notes: Optimal working dilution should be determined by the investigator.

Restrictions: For Research Use only

## Handling

Format: Liquid

Concentration: 0.5 mg/mL

Buffer: PBS pH 7.2, 0.2 % (w/v) BSA, 0.09 % (w/v) sodium azide

Preservative: Sodium azide

Precaution of Use: This product contains Sodium azide: a POISONOUS AND HAZARDOUS SUBSTANCE which should be handled by trained staff only.

Storage: 4 °C

Storage Comment: 2-8°C, Conjugated antibodies should never be frozen.

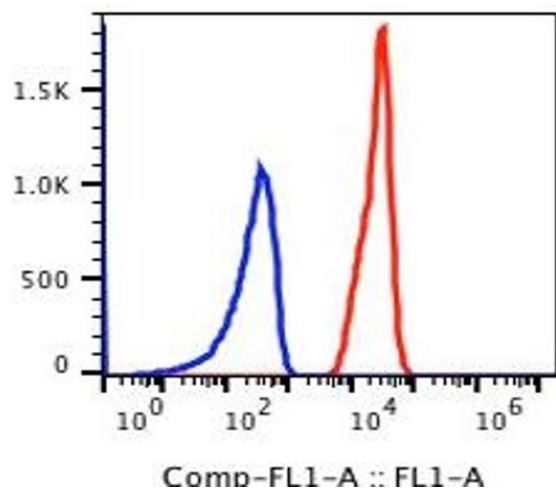


Image 1.