

Datasheet for ABIN3071800

anti-CD235a/GYPA antibody (Biotin)



[Go to Product page](#)

1 Image

Overview

| | |
|--------------|---|
| Quantity: | 100 µg |
| Target: | CD235a/GYPA (GYPA) |
| Reactivity: | Human |
| Host: | Mouse |
| Clonality: | Monoclonal |
| Conjugate: | This CD235a/GYPA antibody is conjugated to Biotin |
| Application: | Flow Cytometry (FACS) |

Product Details

| | |
|------------------|---|
| Purpose: | CD235a Biotin Antibody |
| Immunogen: | Recombinant human glycophorin A protein |
| Clone: | GYPA280 |
| Isotype: | IgG1, kappa |
| Characteristics: | CD235a recognises a 39 kd sialoglycoprotein identified as glycophorin A. It is abundantly expressed on red blood cells and erythroid precursor cells. It has been shown that glycophorin acts on the erythrocyte binding antigen (EBA-175) of <i>P. falciparum</i> as well as the receptor for Sande virus, parvovirus, influenza virus and hepatitis A virus. Two types of glycoproteins are identified and classified as glycophorin A (GPA) and glycophorin B (GPB). Both are trans-membrane sialoglycoproteins. GPA is the carrier of M and N antigens specific blood group whereas GPB is for the S and U specificities. |
| Purification: | Purified |

Product Details

Purity: >95 %

Grade: GMP Grade

Target Details

Target: CD235a/GYPA (GYPA)

Alternative Name: CD235a ([GYPA Products](#))

UniProt: [P02724](#)

Pathways: [Maintenance of Protein Location](#)

Application Details

Application Notes: Optimal working dilution should be determined by the investigator.

Restrictions: For Research Use only

Handling

Format: Liquid

Concentration: 0.5 mg/mL

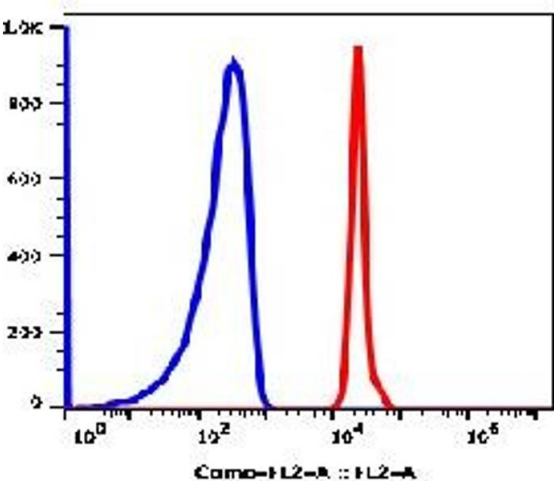
Buffer: PBS pH 7.2, 0.09 % sodium azide

Preservative: Sodium azide

Precaution of Use: This product contains Sodium azide: a POISONOUS AND HAZARDOUS SUBSTANCE which should be handled by trained staff only.

Storage: 4 °C

Storage Comment: 2-8°C, Conjugated antibodies should never be frozen.



Flow Cytometry

Image 1.