



[Go to Product page](#)

## Datasheet for ABIN3071802 **anti-CD25 antibody (APC)**

### 2 Images

#### Overview

Quantity:	100 tests
Target:	CD25 (IL2RA)
Reactivity:	Human
Host:	Mouse
Clonality:	Monoclonal
Conjugate:	This CD25 antibody is conjugated to APC
Application:	Flow Cytometry (FACS)

#### Product Details

Immunogen:	Influenza virus stimulated human peripheral blood mononuclear cells
Clone:	7G7B6
Isotype:	IgG2a kappa
Characteristics:	The antibody specifically binds to the 55 kDa type I transmembrane glycoprotein known as the low-affinity interleukin-2 receptor alpha chain subunit (IL2R $\alpha$ , CD25). CD25 is expressed on regulatory T cells and on monocytes and activated lymphocytes (T and B). CD25 expression on T and B lymphocytes is upregulated by antigenic or mitogenic stimulation.
Purification:	Purified
Purity:	>95 %
Grade:	GMP Grade

## Target Details

---

Target:	CD25 (IL2RA)
Alternative Name:	CD25 ( <a href="#">IL2RA Products</a> )
Background:	The antibody specifically binds to the 55 kDa type I transmembrane glycoprotein known as the low-affinity interleukin-2 receptor alpha chain subunit (IL2R $\alpha$ , CD25). CD25 is expressed on regulatory T cells and on monocytes and activated lymphocytes (T and B). CD25 expression on T and B lymphocytes is upregulated by antigenic or mitogenic stimulation.
NCBI Accession:	<a href="#">NM_000417</a>
UniProt:	<a href="#">P01589</a>
Pathways:	<a href="#">JAK-STAT Signaling</a> , <a href="#">Growth Factor Binding</a> , <a href="#">Activated T Cell Proliferation</a>

## Application Details

---

Restrictions:	For Research Use only
---------------	-----------------------

## Handling

---

Format:	Liquid
Concentration:	50 $\mu$ g/mL
Buffer:	PBS pH 7.2, 0.2 % (w/v) BSA, 0.09 % (w/v) sodium azide
Preservative:	Sodium azide
Precaution of Use:	This product contains Sodium azide: a POISONOUS AND HAZARDOUS SUBSTANCE which should be handled by trained staff only.
Storage:	4 °C

Flow Cytometry

Image 1.

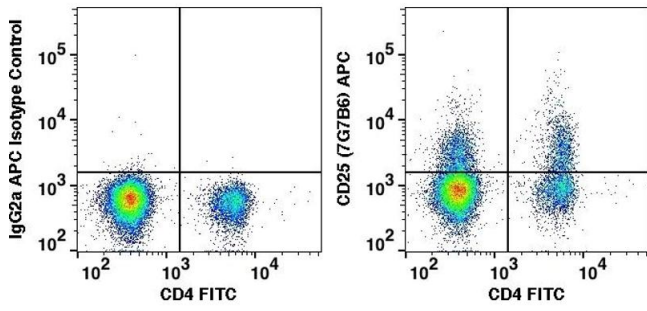


Image 2.

