

Datasheet for ABIN3071813 **anti-CD33 antibody (FITC)**



[Go to Product page](#)

1 Image

Overview

Quantity:	100 tests
Target:	CD33
Reactivity:	Human
Host:	Mouse
Clonality:	Monoclonal
Conjugate:	This CD33 antibody is conjugated to FITC
Application:	Flow Cytometry (FACS)

Product Details

Purpose:	CD33 FITC Antibody
Immunogen:	Human AML cells
Clone:	WM53
Isotype:	IgG1, kappa
Characteristics:	The clone WM53 selectively binds with a 67 kDa glycoprotein, known as CD33 having sialic acid-binding immunoglobulin-like lectin. It belongs to the ITIM (immuno-receptor tyrosine-based inhibitory motif) containing molecules able of recruiting protein tyrosine phosphatases. CD33 is expressed on myeloid progenitors, monocytes, granulocytes, dendritic cells and mast cells. It is absent on platelets, lymphocytes, erythrocytes and hematopoietic stem cells.
Purification:	Purified
Purity:	>95 %

Product Details

Grade: GMP Grade

Target Details

Target: CD33

Alternative Name: CD33 ([CD33 Products](#))

NCBI Accession: [NP_001076087](#), [NP_001171079](#), [NM_001177608](#), [NP_001763](#), [XP_011525834](#)

UniProt: [P20138](#)

Application Details

Application Notes: Optimal working dilution should be determined by the investigator.

Restrictions: For Research Use only

Handling

Format: Liquid

Concentration: 50 µg/mL

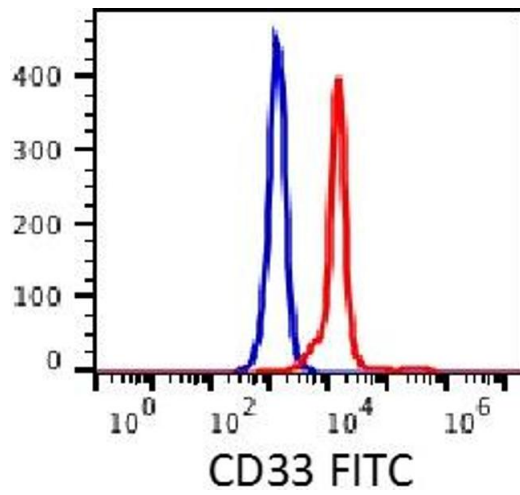
Buffer: PBS pH 7.2, 0.2 % (w/v) BSA, 0.09 % (w/v) sodium azide

Preservative: Sodium azide

Precaution of Use: This product contains Sodium azide: a POISONOUS AND HAZARDOUS SUBSTANCE which should be handled by trained staff only.

Storage: 4 °C

Storage Comment: 2-8°C, Conjugated antibodies should never be frozen.



Flow Cytometry

Image 1.