



[Go to Product page](#)

Datasheet for ABIN3071823
anti-CD38 antibody (APC)

2 Images

Overview

Quantity:	100 tests
Target:	CD38
Reactivity:	Human, Baboon, Cynomolgus, Rhesus Monkey
Host:	Mouse
Clonality:	Monoclonal
Conjugate:	This CD38 antibody is conjugated to APC
Application:	Flow Cytometry (FACS)

Product Details

Immunogen:	Human acute lymphoblastic leukaemia cells
Clone:	OKT10
Isotype:	IgG1 kappa
Characteristics:	The clone OKT10, a mouse monoclonal antibody, recognizes a 45 kDa, type II transmembrane cell surface glycoprotein known as CD38. The CD38 antigen is expressed on pre-B lymphocytes, plasma cells, thymocytes and monocytes. CD38 also presents on activated T lymphocytes, natural killer (NK) lymphocytes, myeloblasts, and erythroblasts. Antigen expression is detected during the early stage of T- and B-lymphocyte differentiation, then lost during the intermediate stage of maturation, only to reappear during the final stage of maturation. The CD38 antigen is expressed on 90 % of CD34+ cells and is not expressed on pluripotent stem cells. CD38 is expressed in T- and B-acute lymphoblastic leukemia (ALL), Burkitt's lymphoma, multiple myeloma, acute myeloid leukemia (AML), and chronic lymphocytic leukemia (CLL).

Product Details

Purification: Purified

Purity: >95 %

Grade: GMP Grade

Target Details

Target: CD38

Abstract: [CD38 Products](#)

Background: The clone OKT10, a mouse monoclonal antibody, recognizes a 45 kDa, type II transmembrane cell surface glycoprotein known as CD38. The CD38 antigen is expressed on pre-B lymphocytes, plasma cells, thymocytes and monocytes. CD38 also presents on activated T lymphocytes, natural killer (NK) lymphocytes, myeloblasts, and erythroblasts. Antigen expression is detected during the early stage of T- and B-lymphocyte differentiation, then lost during the intermediate stage of maturation, only to reappear during the final stage of maturation. The CD38 antigen is expressed on 90 % of CD34+ cells and is not expressed on pluripotent stem cells. CD38 is expressed in T- and B-acute lymphoblastic leukemia (ALL), Burkitt's lymphoma, multiple myeloma, acute myeloid leukemia (AML), and chronic lymphocytic leukemia (CLL).

NCBI Accession: [NM_001775](#)

UniProt: [P28907](#)

Application Details

Restrictions: For Research Use only

Handling

Format: Liquid

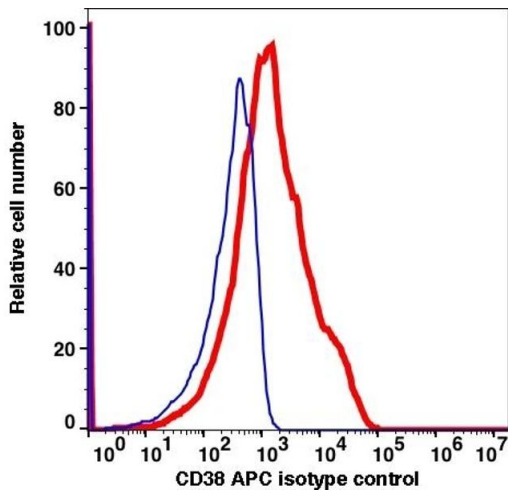
Concentration: 25 µg/mL

Buffer: PBS pH 7.2, 0.2 % (w/v) BSA, 0.09 % (w/v) sodium azide

Preservative: Sodium azide

Precaution of Use: This product contains Sodium azide: a POISONOUS AND HAZARDOUS SUBSTANCE which should be handled by trained staff only.

Storage: 4 °C



Flow Cytometry

Image 1.

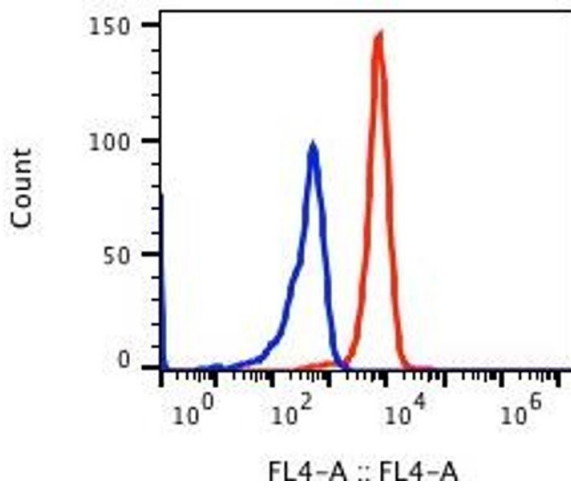


Image 2.