

Datasheet for ABIN3071825  
**anti-CD38 antibody (Biotin)**[2 Images](#)[1 Publication](#)[Go to Product page](#)

## Overview

Quantity:	100 µg
Target:	CD38
Reactivity:	Human, Baboon, Cynomolgus, Rhesus Monkey
Host:	Mouse
Clonality:	Monoclonal
Conjugate:	This CD38 antibody is conjugated to Biotin
Application:	Flow Cytometry (FACS)

## Product Details

Immunogen:	Human acute lymphoblastic leukaemia cells
Clone:	OKT10
Isotype:	IgG1 kappa
Characteristics:	<p>The clone OKT10, a mouse monoclonal antibody, recognizes a 45 kDa, type II transmembrane cell surface glycoprotein known as CD38. The CD38 antigen is expressed on pre-B lymphocytes, plasma cells, thymocytes and monocytes. CD38 also presents on activated T lymphocytes, natural killer (NK) lymphocytes, myeloblasts, and erythroblasts. Antigen expression is detected during the early stage of T- and B-lymphocyte differentiation, then lost during the intermediate stage of maturation, only to reappear during the final stage of maturation. The CD38 antigen is expressed on 90 % of CD34+ cells and is not expressed on pluripotent stem cells. CD38 is expressed in T- and B-acute lymphoblastic leukemia (ALL), Burkitt's lymphoma, multiple myeloma, acute myeloid leukemia (AML), and chronic lymphocytic leukemia (CLL).</p>

## Product Details

Purification:	Purified
Purity:	>95 %
Grade:	GMP Grade

## Target Details

Target:	CD38
Abstract:	<a href="#">CD38 Products</a>
Background:	<p>The clone OKT10, a mouse monoclonal antibody, recognizes a 45 kDa, type II transmembrane cell surface glycoprotein known as CD38. The CD38 antigen is expressed on pre-B lymphocytes, plasma cells, thymocytes and monocytes. CD38 also presents on activated T lymphocytes, natural killer (NK) lymphocytes, myeloblasts, and erythroblasts. Antigen expression is detected during the early stage of T- and B-lymphocyte differentiation, then lost during the intermediate stage of maturation, only to reappear during the final stage of maturation. The CD38 antigen is expressed on 90 % of CD34+ cells and is not expressed on pluripotent stem cells. CD38 is expressed in T- and B-acute lymphoblastic leukemia (ALL), Burkitt's lymphoma, multiple myeloma, acute myeloid leukemia (AML), and chronic lymphocytic leukemia (CLL).</p>
NCBI Accession:	<a href="#">NM_001775</a>
UniProt:	<a href="#">P28907</a>

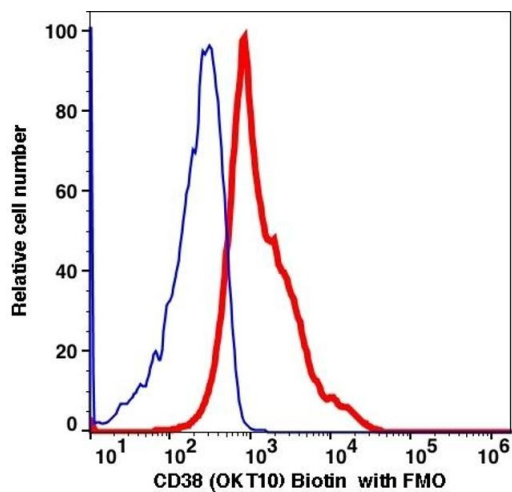
## Application Details

Restrictions:	For Research Use only
---------------	-----------------------

## Handling

Format:	Liquid
Concentration:	0.5 mg/mL
Buffer:	PBS pH 7.2, 0.09 % sodium azide
Preservative:	Sodium azide
Precaution of Use:	This product contains Sodium azide: a POISONOUS AND HAZARDOUS SUBSTANCE which should be handled by trained staff only.
Storage:	4 °C

Product cited in: Hammarlund, Thomas, Amanna, Holden, Slayden, Park, Gao, Slifka: "Plasma cell survival in the absence of B cell memory." in: **Nature communications**, Vol. 8, Issue 1, pp. 1781, (2018) ([PubMed](#)).



Flow Cytometry

Image 1.

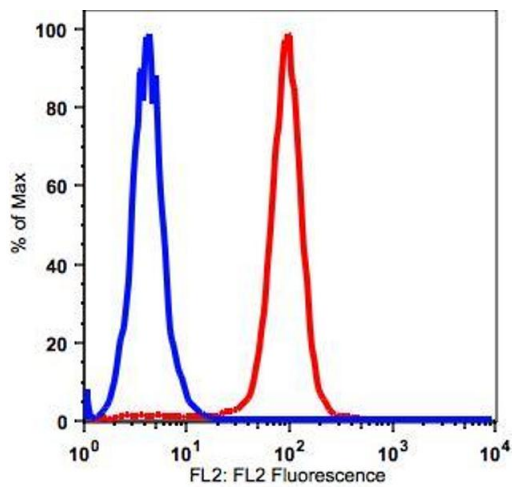


Image 2.