

## Datasheet for ABIN3071859 **anti-CD59 antibody (PE)**



[Go to Product page](#)

### 1 Image

#### Overview

Quantity:	100 tests
Target:	CD59
Reactivity:	Human
Host:	Mouse
Clonality:	Monoclonal
Conjugate:	This CD59 antibody is conjugated to PE
Application:	Flow Cytometry (FACS)

#### Product Details

Purpose:	CD59 PE Antibody
Immunogen:	Human K562 tumor cells
Clone:	BRA-10G
Isotype:	IgG1, kappa
Characteristics:	The clone BRA-10G binds with human CD59, a 20 kDa glycosyl phosphatidyl-inositol (GPI)-anchored cell surface protein. CD59 regulates complement-mediated cell lysis and is a potent inhibitor of the complement membrane attack complex. CD59 is widely distributed on cells in all tissues. The CD59 expression on erythrocytes is important for their survival. Genetic defects in GPI-anchor attachment, that cause a reduction or loss of CD59 and CD55 on erythrocytes produce the symptoms of the disease paroxysmal hemoglobinuria (PNH). This MAb is useful for study on GPI-anchored proteins, PNH and CD59 functions.
Purification:	Purified

## Product Details

---

Purity: >95 %

Grade: GMP Grade

## Target Details

---

Target: CD59

Alternative Name: CD59 ([CD59 Products](#))

NCBI Accession: [NP\\_000602](#), [NP\\_001120695](#), [NP\\_001120697](#), [NP\\_001120698](#), [NP\\_001120699](#), [NP\\_976074](#),  
[NP\\_976075](#), [NP\\_976076](#)

UniProt: [P13987](#)

Pathways: [Complement System](#)

## Application Details

---

Application Notes: Optimal working dilution should be determined by the investigator.

Restrictions: For Research Use only

## Handling

---

Format: Liquid

Concentration: 50 µg/mL

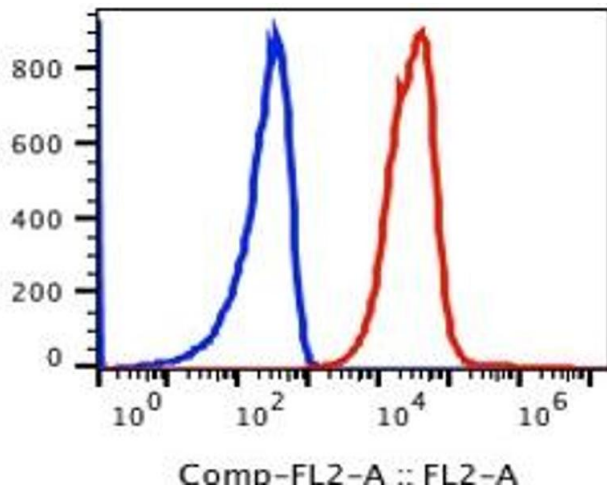
Buffer: PBS pH 7.2, 0.2 % (w/v) BSA, 0.09 % (w/v) sodium azide

Preservative: Sodium azide

Precaution of Use: This product contains Sodium azide: a POISONOUS AND HAZARDOUS SUBSTANCE which should be handled by trained staff only.

Storage: 4 °C

Storage Comment: 2-8°C, Conjugated antibodies should never be frozen.



### Flow Cytometry

Image 1.