

Datasheet for ABIN307186
anti-ELAVL1 antibody (AA 1-13)

2 Images

[Go to Product page](#)

Overview

Quantity:	50 µg
Target:	ELAVL1
Binding Specificity:	AA 1-13
Reactivity:	Human, Mouse, Rat, Cow, Pig, Sheep, Bat, Chicken, Dog, Horse, Monkey, Rabbit
Host:	Rabbit
Clonality:	Polyclonal
Conjugate:	This ELAVL1 antibody is un-conjugated
Application:	Western Blotting (WB), Immunohistochemistry (IHC), Immunohistochemistry (Paraffin-embedded Sections) (IHC (p)), Immunoprecipitation (IP)

Product Details

Brand:	IHC-plus™
Immunogen:	KLH-conjugated, synthetic peptide corresponding to aa1-13 (MSNGYEDHMAEDC) of human HuR. The immunizing sequence is identical in chicken, mouse, and rat. Percent identity by BLAST analysis: Human, Gorilla, Monkey, Mouse, Rat, Sheep, Elephant, Panda, Dog, Bat, Bovine, Rabbit, Horse, Pig, Opossum, Chicken (100%), Gibbon, Platypus (92%). Type of Immunogen: Synthetic peptide - KLH conjugated
Isotype:	IgG
Specificity:	Recognizes human HuR, Mr ~36kD.
Predicted Reactivity:	Percent identity by BLAST analysis: Human, Gorilla, Monkey, Mouse, Rat, Sheep, Elephant,

Product Details

Panda, Dog, Bat, Bovine, Rabbit, Horse, Pig, Opossum, Chicken (100%) Gibbon, Platypus (92%).

Purification: Affinity purified

Target Details

Target: ELAVL1

Alternative Name: ELAVL1 / HUR ([ELAVL1 Products](#))

Background: Name/Gene ID: ELAVL1

Synonyms: ELAVL1, ELAV1, Hua, HUR, Hu antigen R, ELAV-like protein 1, Hu-antigen R, MelG

Gene ID: 1994

UniProt: [Q15717](#)

Pathways: [AMPK Signaling](#)

Application Details

Application Notes: Approved: IHC, IHC-P (5 µg/mL), IP, WB

Usage: Immunohistochemistry: This antibody was validated for use in immunohistochemistry on a panel of 21 formalin-fixed, paraffin-embedded (FFPE) human tissues after heat induced antigen retrieval in pH 6.0 citrate buffer. After incubation with the primary antibody, slides were incubated with biotinylated secondary antibody, followed by alkaline phosphatase-streptavidin and chromogen. The stained slides were evaluated by a pathologist to confirm staining specificity. The optimal working concentration for this antibody was determined to be 5 µg/mL. Western Blot: 0.5-2.0 µg/mL. Detected HuR in RIPA lysates from 3T3/A31 cells. Immunoprecipitation: 4 µg immunoprecipitated HuR from 500 µg of 3T3/A31 RIPA lysate.

Comment: Target Species of Antibody: Human

Restrictions: For Research Use only

Handling

Format: Liquid

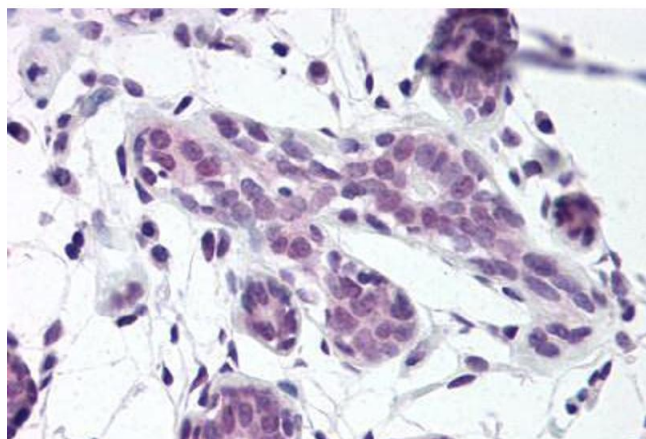
Concentration: Lot specific

Buffer: Supplied as a liquid in Tris-glycine, 0.15M sodium chloride, 0.05 % sodium azide, pH 7.4, 30 %

Handling

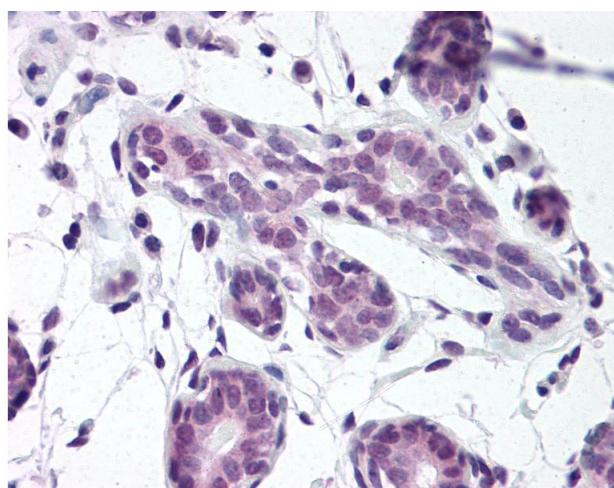
	glycerol
Preservative:	Sodium azide
Precaution of Use:	This product contains Sodium azide: a POISONOUS AND HAZARDOUS SUBSTANCE which should be handled by trained staff only.
Handling Advice:	Avoid repeat freeze-thaw cycles.
Storage:	4 °C, -20 °C
Storage Comment:	Short term: 4°C. Long term: Store at -20°C. Avoid freeze-thaw cycles.

Images



Immunohistochemistry (Paraffin-embedded Sections)

Image 1. Human Breast (formalin-fixed, paraffin-embedded) stained with ELAVL1 antibody ABIN307186 at 5 ug/ml followed by biotinylated goat anti-rabbit IgG secondary antibody ABIN481713, alkaline phosphatase-streptavidin and chromogen.



Immunohistochemistry

Image 2. Anti-HuR antibody IHC of human breast. Immunohistochemistry of formalin-fixed, paraffin-embedded tissue after heat-induced antigen retrieval. Antibody concentration 5 ug/ml.