

Datasheet for ABIN3071873 **anti-HLA-DR antibody (Biotin)**



[Go to Product page](#)

1 Image

Overview

Quantity:	100 µg
Target:	HLA-DR
Reactivity:	Human, Baboon, Cynomolgus, Rhesus Monkey
Host:	Mouse
Clonality:	Monoclonal
Conjugate:	This HLA-DR antibody is conjugated to Biotin
Application:	Flow Cytometry (FACS)

Product Details

Purpose:	Anti-HLA-DR Biotin Antibody
Immunogen:	Human B lymphocytes
Clone:	L243
Isotype:	IgG2a, kappa
Characteristics:	The L243 reacts with human HLA-DR antigen which is expressed on B lymphocytes, monocytes, macrophages, activated T lymphocytes, activated natural killer (NK) lymphocytes, and human progenitor cells. HLA-DR is also present on thymic epithelium, B lymphocyte dependent areas of spleen and lymph node, and B cell lymphomas.
Purification:	Purified
Purity:	>95 %
Grade:	GMP Grade

Target Details

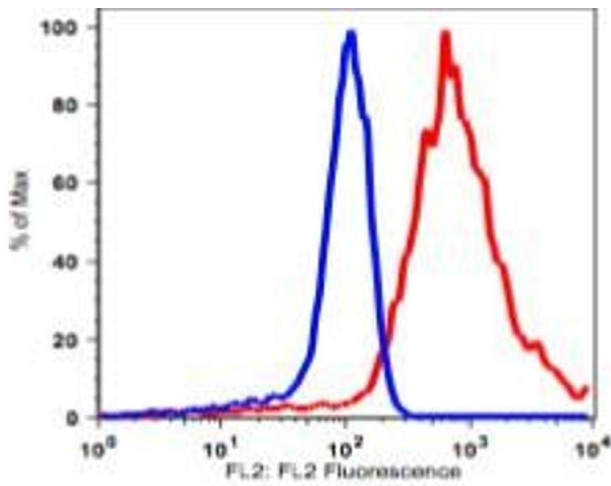
Target:	HLA-DR
Alternative Name:	HLA-DR (HLA-DR Products)
Gene ID:	3122, 3123
NCBI Accession:	NM_019111
UniProt:	P01903
Pathways:	Human Leukocyte Antigen (HLA) in Adaptive Immune Response

Application Details

Application Notes:	Optimal working dilution should be determined by the investigator.
Restrictions:	For Research Use only

Handling

Format:	Liquid
Concentration:	0.5 mg/mL
Buffer:	PBS pH 7.2, 0.09 % sodium azide
Preservative:	Sodium azide
Precaution of Use:	This product contains Sodium azide: a POISONOUS AND HAZARDOUS SUBSTANCE which should be handled by trained staff only.
Storage:	4 °C
Storage Comment:	2-8°C, Conjugated antibodies should never be frozen.



Flow Cytometry

Image 1.