

Datasheet for ABIN307415  
**anti-SUB1 antibody (N-Term)**



[Go to Product page](#)

2 Images

Overview

Quantity:	100 µL
Target:	SUB1
Binding Specificity:	N-Term
Reactivity:	Human, Cow, Dog, Horse, Guinea Pig, Pig, Monkey
Host:	Rabbit
Clonality:	Polyclonal
Conjugate:	This SUB1 antibody is un-conjugated
Application:	Western Blotting (WB), Immunohistochemistry (IHC), Immunohistochemistry (Paraffin-embedded Sections) (IHC (p))

Product Details

Immunogen:	Synthetic peptide from N-Terminus of human SUB1 (P53999, NP_006704). Percent identity by BLAST analysis: Human, Orangutan, Gibbon, Monkey, Galago, Marmoset, Elephant, Dog, Bovine, Horse, Pig, Guinea pig (100%), Rat, Rabbit (92%), Mouse (91%), Turkey, Chicken (85%), Zebra finch (84%).  Type of Immunogen: Synthetic peptide
Isotype:	IgG
Specificity:	Human SUB1
Predicted Reactivity:	Percent identity by BLAST analysis: Human, Orangutan, Monkey, Dog, Bovine (100%) Rat (92%) Mouse (91%) Chicken (85%) Zebra finch (84%).

## Product Details

---

Purification: Protein A purified

## Target Details

---

Target: SUB1

Alternative Name: SUB1 ([SUB1 Products](#))

Background: Name/Gene ID: SUB1

Synonyms: SUB1, p15, p14, PC4, Positive cofactor 4, RPO2TC1, SUB1 homolog, SUB1 homolog (S. cerevisiae)

Gene ID: 10923

NCBI Accession: [NP\\_006704](#)

## Application Details

---

Application Notes: Approved: IHC, IHC-P, WB (2.5 µg/mL)

Comment: Target Species of Antibody: Human

Restrictions: For Research Use only

## Handling

---

Format: Lyophilized

Reconstitution: After adding water, will consist of PBS buffer with 2 % sucrose

Concentration: Lot specific

Buffer: Lyophilized.

Handling Advice: Avoid repeat freeze-thaw cycles.

Storage: 4 °C, -20 °C

Storage Comment: Long term: -20°C, the use of 50% glycerol is recommended if storing aliquots in -20°C for long term use (up to 1 year)

Short term (less than 1 week): 4°C. Avoid freeze-thaw cycles.

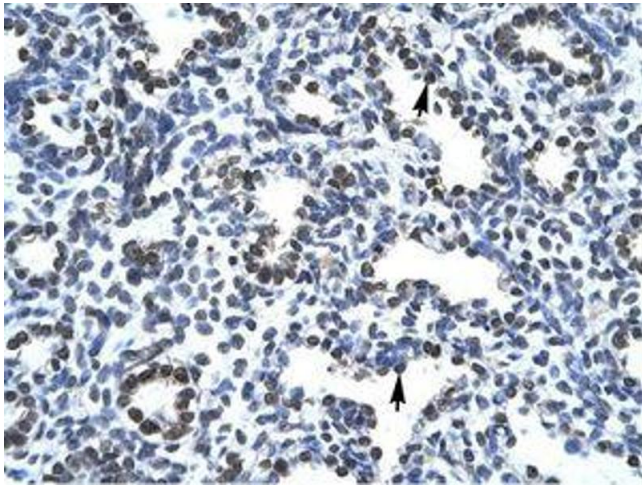


Image 1.



Image 2.