

Datasheet for ABIN3075507  
**WT1 Protein (AA 1-449) (His tag)**

## 3 Images

[Go to Product page](#)

## Overview

Quantity:	1 mg
Target:	WT1
Protein Characteristics:	AA 1-449
Origin:	Human
Source:	Insect Cells
Protein Type:	Recombinant
Purification tag / Conjugate:	This WT1 protein is labelled with His tag.
Application:	Western Blotting (WB), SDS-PAGE (SDS), ELISA, Crystallization (Crys)

## Product Details

Sequence:	MHHHHHHGSD VRDLNALLPA VPSLGGGGGC ALPVSGAAQW APVLDFAAPP ASAYGSLGGP APPPAPPPPP PPPPHSFIKQ EPSWGGAEPH EEQCLSAFTV HFSGQFTGTA GACRYGPFPGP PPPSQASSGQ ARMFNPAPYL PSCLESQPAI RNQGYSTVTF DGTPSYGHTP SHHAAQFPNH SFKHEDPMGQ QGSLGEQQYS VPPPVYGCHT PTDSC TGSQA LLLRTPYSSD NLYQMTSQLE CMTWNQMNLG ATILKGVAAGS SSVKWTEGQS NHSTGYESDN HTTPILCGAQ YRIHTHGVR GIQDVRVPV VAPT LVRAS ETSEKRP FMC AYPGCNKRYF KLSHLQMHSR KHTGEKPYQC DFKDCERRFS RSDQLKRHR RHTGVKPFQC KTCQRKFSRS DHLKTHTRTH TGKTSEKPF CRWPSCQKKF ARSDELVRHH NMHQRNMTKL QLAL
Specificity:	N-terminal His-tag
Characteristics:	<ul style="list-style-type: none"><li>Made in Germany - from design to production - by highly experienced protein experts.</li><li>Human WT1 Protein (raised in Insect Cells) purified by multi-step, protein-specific process to ensure crystallization grade.</li></ul>

## Product Details

- State-of-the-art algorithm used for plasmid design (Gene synthesis).

This made-to-order protein has already been successfully produced. Please let us know if you are interested in purchasing a smaller amount of this protein. We will check our stock and make you a customized quote in case we can provide this protein in a smaller amount..

When you order this made-to-order protein you will only pay upon receipt of the correctly folded protein. With no financial risk on your end you can rest assured that our experienced protein experts will do everything to make sure that you receive the protein you ordered.

The concentration of our recombinant proteins is measured using the absorbance at 280nm.

The protein's absorbance will be measured in several dilutions and is measured against its specific reference buffer.

The concentration of the protein is calculated using its specific absorption coefficient. We use the ExPASy's protparam tool to determine the absorption coefficient of each protein.

Purification:	Two step purification of proteins expressed in baculovirus infected SF9 insect cells:  1. In a first purification step, the protein is purified from the cleared cell lysate using three different His-tag capture materials: high yield, EDTA resistant, or DTT resistant. Eluate fractions are analyzed by SDS-PAGE.  2. Protein containing fractions of the best purification are subjected to second purification step through size exclusion chromatography. Eluate fractions are analyzed by SDS-PAGE and Western blot.
Purity:	>95 % as determined by SDS PAGE, Size Exclusion Chromatography and Western Blot.
Sterility:	0.22 µm filtered
Endotoxin Level:	Protein is endotoxin free.
Grade:	Crystallography grade

## Target Details

Target:	WT1
Alternative Name:	WT1 ( <a href="#">WT1 Products</a> )
Background:	Transcription factor that plays an important role in cellular development and cell survival. Regulates the expression of numerous target genes, including EPO. Plays an essential role for development of the urogenital system. Recognizes and binds to the DNA sequence 5'-CGCCCCCGC-3'. It has a tumor suppressor as well as an oncogenic role in tumor formation. Function may be isoform-specific: isoforms lacking the KTS motif may act as transcription factors. Isoforms containing the KTS motif may bind mRNA and play a role in mRNA

## Target Details

	metabolism or splicing. Isoform 1 has lower affinity for DNA, and can bind RNA. {ECO:0000269 PubMed:19123921, ECO:0000269 PubMed:19416806}.
Molecular Weight:	50.1 kDa Including tag.
UniProt:	<a href="#">P19544</a>
Pathways:	<a href="#">Tube Formation</a>

## Application Details

Application Notes:	In addition to the applications listed above we expect the protein to work for functional studies as well. As the protein has not been tested for functional studies yet we cannot offer a guarantee though.
Comment:	In cases in which it is highly likely that the recombinant protein with the default tag will be insoluble our protein lab may suggest a higher molecular weight tag (e.g. GST-tag) instead to increase solubility. We will discuss all possible options with you in detail to assure that you receive your protein of interest.
Restrictions:	For Research Use only

## Handling

Format:	Liquid
Buffer:	20 mM Hepes pH 7.5, 600 mM NaCl, 1 mM EDTA, 10% glycerol
Handling Advice:	Avoid repeated freeze-thaw cycles.
Storage:	-80 °C
Storage Comment:	Store at -80°C.
Expiry Date:	Unlimited (if stored properly)

Size-exclusion chromatography-High Pressure Liquid Chromatography

Image 1.

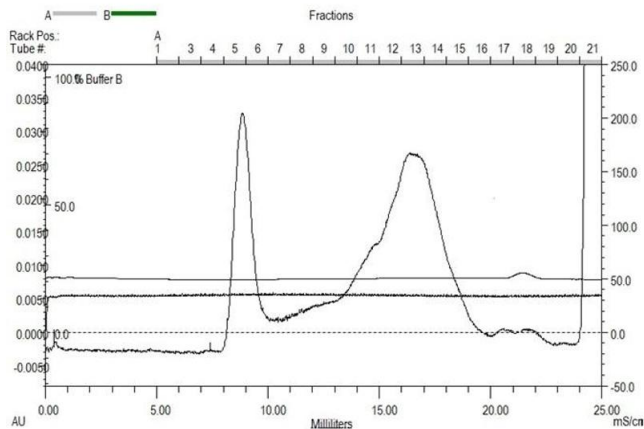
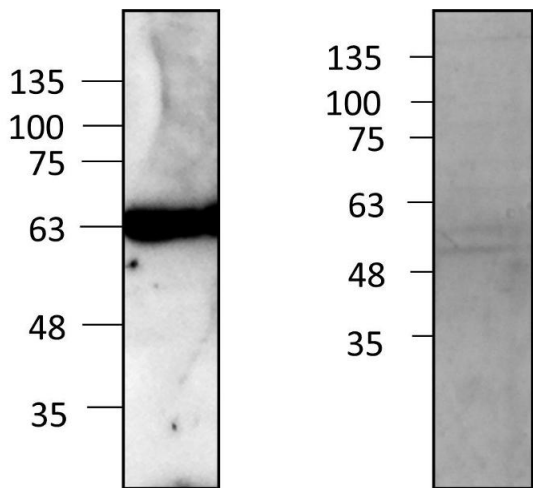


Image 2. „Crystallography Grade“ protein due to multi-step, protein-specific purification process



Western Blotting

Image 3.