

Datasheet for ABIN3075585

WDR20 Protein (AA 2-569) (His tag,GST tag)**3** Images[Go to Product page](#)

Overview

Quantity:	1 mg
Target:	WDR20
Protein Characteristics:	AA 2-569
Origin:	Human
Source:	Escherichia coli (E. coli)
Protein Type:	Recombinant
Purification tag / Conjugate:	This WDR20 protein is labelled with His tag,GST tag.
Application:	ELISA, Western Blotting (WB), Crystallization (Crys), SDS-PAGE (SDS)

Product Details

Sequence:	MSPILGYWKI KGLVQPTRLL LEYLEEKYEE HLYERDEGDK WRNKKFELGL EFPNLPYYID GDVKLTQSMA IIRYIADKHN MLGGCPKERA EISMLEGAVL DIRYGVSRIA YSKDFETLKV DFLSKLPEML KMFEDRLCHK TYLNGDHVTH PDFMLYDALD VVLYMDPMCL DAFPKLVCFK KRIEAIQID KYLKSSKYIA WPLQGWQATF GGGDHPPKSD LVPRGSATEG G GKEMNEIKT QFTTREGLYK LLPHSEYSRP NRVPFNSQGS NPVRVSFVNL NDQSGNGDRL CFNVGRELYF YIYKGVKAA DLSKPIDKRI YKGTQPTCHD FNHLTATAES VSLLVGFSAG QVQLDPIKK ETSKLFNEER LIDKSRVTCV KWVPGSESLF LVAHSSGNMY LYNVEHTCGT TAPHYQLLKQ GESFAVHTCK SKSTRNPLLK WTVGEGALNE FAFSPDGKFL ACVSQDGFLR VFNFDSELH GTMKSYFGGL LCVCWSPDGK YIVTGGEDDL VTWVSFVDCR VIARGHGHKS WWSVVAFDPY TTSVEEGDPM EFGSDEDFQ DLLHFGRDRA NSTQSRLSKR NSTDSRPVSV TYRFGSVGQD TQLCLWDLTE DILFPHQPLS RARTHTNVMN ATSPAGSNG NSVTTPGNSV PPPLPRNSL PHSAVSNAGS KSSVMDGAIA SGVSKFATLS LHDRKERHHE KDHKRNHSMG HISSKSSDKL
-----------	--

Product Details

NLVTKTKTDP AKTLGTPLCP RMEDVPLLEP LICKKIAHER LTVLIFLEDC IVTACQEGFI
CTWGRPGKV V SFNPHHHHHH

Sequence including N-terminal GST tag and C-terminal His-tag.

Characteristics:

- Made in Germany - from design to production - by highly experienced protein experts.
- Human WDR20 Protein (raised in E. Coli) purified by multi-step, protein-specific process to ensure crystallization grade.
- State-of-the-art algorithm used for plasmid design (Gene synthesis).
- Tag Location: N-terminal GST tag, C-terminal His Tag

The concentration of our recombinant proteins is measured using the absorbance at 280nm.

The protein's absorbance will be measured in several dilutions and is measured against its specific reference buffer.

The concentration of the protein is calculated using its specific absorption coefficient. We use the Expasy's protparam tool to determine the absorption coefficient of each protein.

Purification:

The protein is purified from the cleared cell lysate using EDTA resistant His-tag capture materials. Eluate fractions are analyzed by SDS-PAGE. Protein containing fractions are subjected to a second purification step through size exclusion chromatography. Eluate fractions are analyzed by SDS-PAGE and Western blot.

Purity:

>95 % as determined by SDS PAGE, Size Exclusion Chromatography and Western Blot.

Sterility:

0.22 µm filtered

Endotoxin Level:

Endotoxin has not been removed. Please contact us if you require endotoxin removal.

Grade:

Crystallography grade

Target Details

Target:

WDR20

Alternative Name:

WDR20 ([WDR20 Products](#))

Molecular Weight:

63.7 kDa Including tag.

UniProt:

[Q8TBZ3](#)

Application Details

Application Notes:

In addition to the applications listed above we expect the protein to work for functional studies as well. As the protein has not been tested for functional studies yet we cannot offer a guarantee though.

Application Details

Comment:	In cases in which it is highly likely that the recombinant protein with the default tag will be insoluble our protein lab may suggest a higher molecular weight tag (e.g. GST-tag) instead to increase solubility. We will discuss all possible options with you in detail to assure that you receive your protein of interest.
Restrictions:	For Research Use only

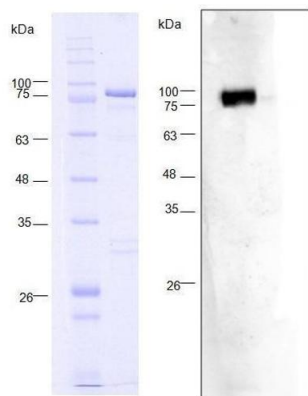
Handling

Format:	Liquid
Buffer:	100 mM NaCL, 20 mM Hepes, 10% glycerol. pH value is at the discretion of the manufacturer.
Handling Advice:	Avoid repeated freeze-thaw cycles.
Storage:	-80 °C
Storage Comment:	Store at -80°C.
Expiry Date:	Unlimited (if stored properly)

Images



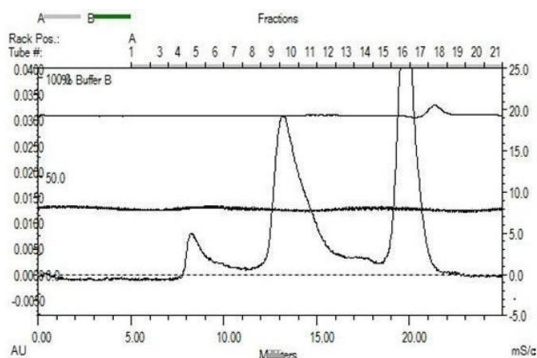
Image 1. „Crystallography Grade“ protein due to multi-step, protein-specific purification process



WD Repeat Domain 20 (WDR20) (AA 2-569) protein
(His tag); 90 kDa including N-term GST tag; fraction 9
and 10

Western Blotting

Image 2.



WD Repeat Domain 20 (WDR20) (AA 2-569) protein
(His tag); 90 kDa including N-term GST tag
Gel filtration Superdex 200 10/300 GL
Fraction 9 and 10 were pooled

Size-exclusion chromatography-High Pressure Liquid Chromatography

Image 3.