



Datasheet for ABIN307617  
**anti-DFFB antibody (AA 205-222)**



[Go to Product page](#)

2 Images

Overview

Quantity:	0.1 mg
Target:	DFFB
Binding Specificity:	AA 205-222
Reactivity:	Mouse
Host:	Rabbit
Clonality:	Polyclonal
Conjugate:	This DFFB antibody is un-conjugated
Application:	Western Blotting (WB), Immunohistochemistry (IHC), Immunohistochemistry (Paraffin-embedded Sections) (IHC (p))

Product Details

Immunogen:	Synthetic peptide corresponding to amino acids 205-222 of mouse CAD ( AA 205-222 ).  Type of Immunogen: Synthetic peptide
Isotype:	IgG
Specificity:	CAD (Caspase Activated Deoxyribonuclease) is the murine homologue of human DFF-40. CAD is released and activated by caspase cleavage of ICAD, and eventually causes degradation of nuclear DNA. AHP486 recognizes the 40kD CAD in Western blots.
Purification:	Purified

## Target Details

---

Target:	DFFB
Alternative Name:	DFF40 / DFFB ( <a href="#">DFFB Products</a> )
Background:	Name/Gene ID: DFFB Family: DNase  Synonyms: DFFB, Caspase-activated nuclease, DFF-40, DFF40, Caspase-activated DNase, CPAN, DFF2
Gene ID:	1677
UniProt:	<a href="#">O76075</a>
Pathways:	<a href="#">Apoptosis, Caspase Cascade in Apoptosis</a>

## Application Details

---

Application Notes:	Approved: IHC, IHC-P, WB (1:500 - 1:1000)
Comment:	Target Species of Antibody: Mouse
Restrictions:	For Research Use only

## Handling

---

Format:	Liquid
Concentration:	Lot specific
Buffer:	PBS, 0.02 % sodium azide.
Preservative:	Sodium azide
Precaution of Use:	This product contains Sodium azide: a POISONOUS AND HAZARDOUS SUBSTANCE which should be handled by trained staff only.

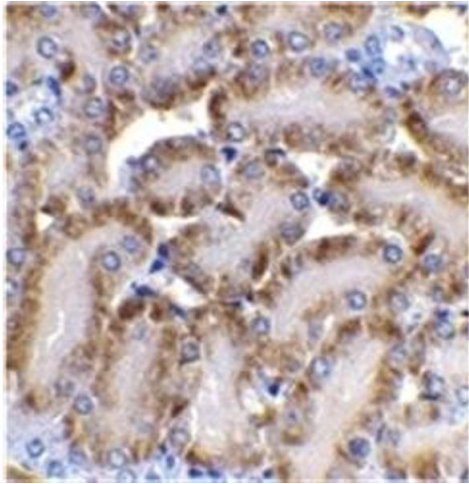


Image 1.

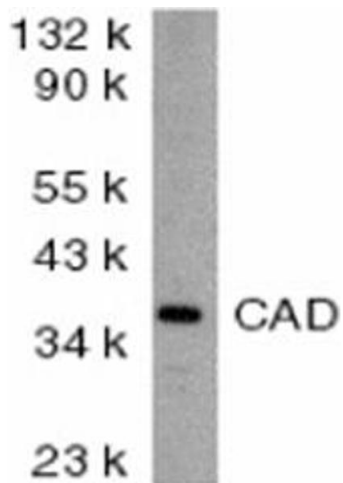


Image 2.