

Datasheet for ABIN3076996

**SNAP25 Protein (AA 1-206) (Strep Tag)****3** Images[Go to Product page](#)

## Overview

Quantity:	1 mg
Target:	SNAP25
Protein Characteristics:	AA 1-206
Origin:	Human
Source:	Tobacco (Nicotiana tabacum)
Protein Type:	Recombinant
Purification tag / Conjugate:	This SNAP25 protein is labelled with Strep Tag.
Application:	SDS-PAGE (SDS), Western Blotting (WB), ELISA

## Product Details

Sequence:	<p>MAEDADMRNE LEEMQRRADQ LADESLESTR RMLQLVEESK DAGIRTLVML DEQGEQLERI EEGMDQINKD MKEAEKNLTD LGKFCGLCVC PCNKLKSSDA YKKA WGNNQD GVVASQPARV VDEREQMAIS GGFIRRV TND ARENEMDENL EQVSGIIGNL RHMALDMGNE IDTQNRQIDR IMEKADSNKT RIDEANQRAT KMLGSG</p> <p><b>Sequence without tag. The proposed Strep-Tag is based on experience s with the expression system, a different complexity of the protein could make another tag necessary. In case you have a special request, please contact us.</b></p>
Characteristics:	<p>Key Benefits:</p> <ul style="list-style-type: none"><li>• Made in Germany - from design to production - by highly experienced protein experts.</li><li>• Protein expressed with ALiCE® and purified by multi-step, protein-specific process to ensure correct folding and modification.</li><li>• These proteins are normally active (enzymatically functional) as our customers have</li></ul>

reported (not tested by us and not guaranteed).

- State-of-the-art algorithm used for plasmid design (Gene synthesis).

This protein is a **made-to-order protein** and will be made for the first time for your order. Our experts in the lab will ensure that you receive a correctly folded protein.

The big advantage of ordering our **made-to-order proteins** in comparison to ordering custom made proteins from other companies is that there is no financial obligation in case the protein cannot be expressed or purified.

Expression System:

- ALiCE®, our Almost Living Cell-Free Expression System is based on a lysate obtained from *Nicotiana tabacum* c.v.. This contains all the protein expression machinery needed to produce even the most difficult-to-express proteins, including those that require post-translational modifications.
- During lysate production, the cell wall and other cellular components that are not required for protein production are removed, leaving only the protein production machinery and the mitochondria to drive the reaction. During our lysate completion steps, the additional components needed for protein production (amino acids, cofactors, etc.) are added to produce something that functions like a cell, but without the constraints of a living system - all that's needed is the DNA that codes for the desired protein!

Concentration:

- The concentration of our recombinant proteins is measured using the absorbance at 280nm.
- The protein's absorbance will be measured in several dilutions and is measured against its specific reference buffer.
- We use the ExPASy's ProtParam tool to determine the absorption coefficient of each protein.

---

Purification:

Two step purification of proteins expressed in Almost Living Cell-Free Expression System (ALiCE®):

1. In a first purification step, the protein is purified from the cleared cell lysate using StrepTag capture material. Eluate fractions are analyzed by SDS-PAGE.
2. Protein containing fractions of the best purification are subjected to second purification step through size exclusion chromatography. Eluate fractions are analyzed by SDS-PAGE and Western blot.

---

Purity:

>80 % as determined by SDS PAGE, Size Exclusion Chromatography and Western Blot.

---

Endotoxin Level:

Low Endotoxin less than 1 EU/mg (< 0.1 ng/mg)

---

## Product Details

Grade: Crystallography grade

## Target Details

Target: SNAP25

Alternative Name: SNAP25 ([SNAP25 Products](#))

Background: Synaptosomal-associated protein 25 (SNAP-25) (Super protein) (SUP) (Synaptosomal-associated 25 kDa protein),FUNCTION: t-SNARE involved in the molecular regulation of neurotransmitter release. May play an important role in the synaptic function of specific neuronal systems. Associates with proteins involved in vesicle docking and membrane fusion. Regulates plasma membrane recycling through its interaction with CENPF. Modulates the gating characteristics of the delayed rectifier voltage-dependent potassium channel KCNB1 in pancreatic beta cells. {ECO:0000250|UniProtKB:P60881}.

Molecular Weight: 23.3 kDa

UniProt: [P60880](#)

Pathways: [Positive Regulation of Peptide Hormone Secretion](#), [Hormone Transport](#), [Synaptic Vesicle Exocytosis](#), [Dicarboxylic Acid Transport](#)

## Application Details

Application Notes: In addition to the applications listed above we expect the protein to work for functional studies as well. As the protein has not been tested for functional studies yet we cannot offer a guarantee though.

Comment: ALiCE®, our Almost Living Cell-Free Expression System is based on a lysate obtained from *Nicotiana tabacum* c.v.. This contains all the protein expression machinery needed to produce even the most difficult-to-express proteins, including those that require post-translational modifications.

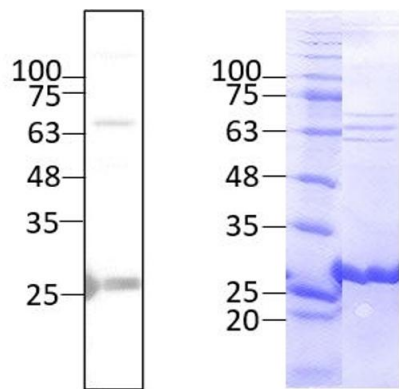
During lysate production, the cell wall and other cellular components that are not required for protein production are removed, leaving only the protein production machinery and the mitochondria to drive the reaction. During our lysate completion steps, the additional components needed for protein production (amino acids, cofactors, etc.) are added to produce something that functions like a cell, but without the constraints of a living system - all that's needed is the DNA that codes for the desired protein!

Restrictions: For Research Use only

Handling

Format:	Liquid
Buffer:	The buffer composition is at the discretion of the manufacturer. If you have a special request, please contact us.
Handling Advice:	Avoid repeated freeze-thaw cycles.
Storage:	-80 °C
Storage Comment:	Store at -80°C.
Expiry Date:	Unlimited (if stored properly)

Images



Synaptosomal-associated protein 25 (SNAP25), 24 kDa, WB & SDS – page gel, Fractions 12 - 14



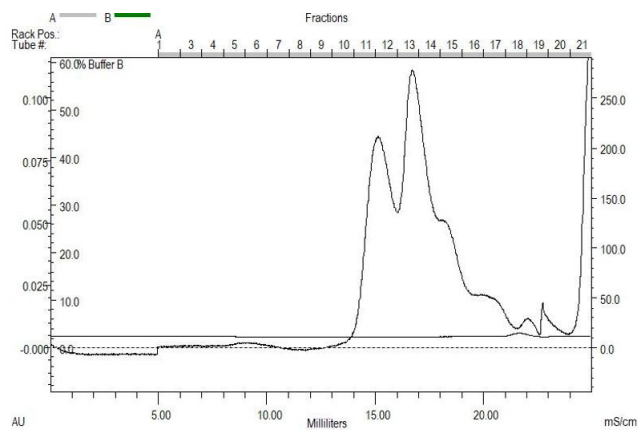
Western Blotting

Image 1.

Image 2. „Crystallography Grade“ protein due to multi-step, protein-specific purification process

Size-exclusion chromatography-High Pressure Liquid Chromatography

Image 3.



Synaptosomal-associated protein 25 (SNAP25), 24 kDa,  
Gel filtration, Superose 6 (Fractions 12 - 14)