

Datasheet for ABIN308050 **anti-C3 antibody (FITC)**



[Go to Product page](#)

1 Image

Overview

Quantity:	100 µg
Target:	C3
Reactivity:	Human, Mouse
Host:	Mouse
Clonality:	Monoclonal
Conjugate:	This C3 antibody is conjugated to FITC
Application:	ELISA, Flow Cytometry (FACS)

Product Details

Immunogen:	Human C3. Type of Immunogen: Purified protein
Clone:	6C9
Isotype:	IgG1
Specificity:	FITC Anti-Human/Mouse Complement Component C3 monoclonal antibody (Clone: 6C9) reacts with human and mouse C3 as well as the breakdown products C3b and iC3b. C3 is the most abundant complement protein in serum. C3 and its cleavage products, C3a and C3b, p.
Purification:	Protein G purified

Target Details

Target:	C3
---------	----

Target Details

Alternative Name:	Complement C3 (C3 Products)
Background:	Name/Gene ID: C3 Synonyms: C3, AHUS5, ARMD9, Complement component C3, CPAMD1, Complement C3, ASP, Complement component 3
Gene ID:	718
UniProt:	P01024
Pathways:	Complement System , Regulation of Leukocyte Mediated Immunity , Positive Regulation of Immune Effector Process , Regulation of G-Protein Coupled Receptor Protein Signaling

Application Details

Application Notes:	Approved: ELISA, Flo (0.2 µg/10 x10 ⁶) Usage: The applications listed have been tested for the unconjugated form of this product. Other forms have not been tested. Not recommended for: IHC-P
Comment:	Target Species of Antibody: Human
Restrictions:	For Research Use only

Handling

Format:	Liquid
Concentration:	Lot specific
Buffer:	PBS, 0.02 % sodium azide, EIA grade BSA.
Preservative:	Sodium azide
Precaution of Use:	This product contains Sodium azide: a POISONOUS AND HAZARDOUS SUBSTANCE which should be handled by trained staff only.
Handling Advice:	Avoid freeze-thaw cycles and prolonged exposure to light.
Storage:	4 °C,-20 °C
Storage Comment:	Short term: store at 4°C. Long term: aliquot and store -20°C. Avoid freeze-thaw cycles. Protect

from light.

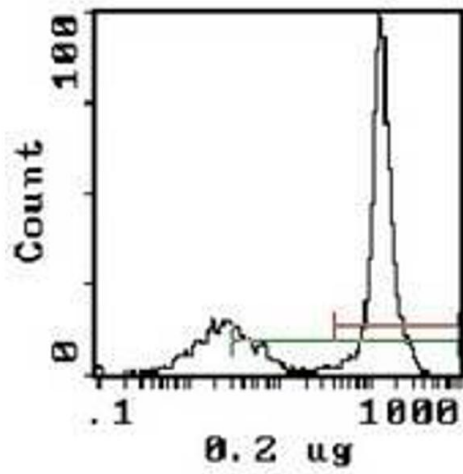


Image 1.