

Datasheet for ABIN3081816
EIF6 Protein (AA 1-245) (Strep Tag)

3 Images

[Go to Product page](#)

Overview

Quantity:	1 mg
Target:	EIF6
Protein Characteristics:	AA 1-245
Origin:	Human
Source:	Tobacco (Nicotiana tabacum)
Protein Type:	Recombinant
Purification tag / Conjugate:	This EIF6 protein is labelled with Strep Tag.
Application:	Western Blotting (WB), ELISA, SDS-PAGE (SDS)

Product Details

Sequence:	<p>MAVRASFENN CEIGCFAKLT NTYCLVAIGG SENFYSVFEG ELSDTIPVVH ASIAGCRIIG RMCVGNRHGL LVPNNTTDQE LQHIRNSLPD TVQIRRVEER LSALGNVTTC NDYVALVHPD LDRETEEILA DVLKVEVFRQ TVADQVLVGS YCVFSNQGGL VHPKTSIEDQ DELSSLLQVP LVAGTVNRGS EVIAAGMVVN DWCAFCGLDT TSTELSVVES VFKLNEAQPS TIATSMRDSL IDSLT</p> <p>Sequence without tag. The proposed Strep-Tag is based on experience s with the expression system, a different complexity of the protein could make another tag necessary. In case you have a special request, please contact us.</p>
Characteristics:	<p>Key Benefits:</p> <ul style="list-style-type: none">• Made in Germany - from design to production - by highly experienced protein experts.• Protein expressed with ALiCE® and purified by multi-step, protein-specific process to ensure correct folding and modification.• These proteins are normally active (enzymatically functional) as our customers have

reported (not tested by us and not guaranteed).

- State-of-the-art algorithm used for plasmid design (Gene synthesis).

This protein is a **made-to-order protein** and will be made for the first time for your order. Our experts in the lab will ensure that you receive a correctly folded protein.

The big advantage of ordering our **made-to-order proteins** in comparison to ordering custom made proteins from other companies is that there is no financial obligation in case the protein cannot be expressed or purified.

Expression System:

- ALiCE®, our Almost Living Cell-Free Expression System is based on a lysate obtained from *Nicotiana tabacum* c.v.. This contains all the protein expression machinery needed to produce even the most difficult-to-express proteins, including those that require post-translational modifications.
- During lysate production, the cell wall and other cellular components that are not required for protein production are removed, leaving only the protein production machinery and the mitochondria to drive the reaction. During our lysate completion steps, the additional components needed for protein production (amino acids, cofactors, etc.) are added to produce something that functions like a cell, but without the constraints of a living system - all that's needed is the DNA that codes for the desired protein!

Concentration:

- The concentration of our recombinant proteins is measured using the absorbance at 280nm.
- The protein's absorbance will be measured in several dilutions and is measured against its specific reference buffer.
- We use the ExPASy's ProtParam tool to determine the absorption coefficient of each protein.

Purification:

Two step purification of proteins expressed in Almost Living Cell-Free Expression System (ALiCE®):

1. In a first purification step, the protein is purified from the cleared cell lysate using StrepTag capture material. Eluate fractions are analyzed by SDS-PAGE.
2. Protein containing fractions of the best purification are subjected to second purification step through size exclusion chromatography. Eluate fractions are analyzed by SDS-PAGE and Western blot.

Purity:

>80 % as determined by SDS PAGE, Size Exclusion Chromatography and Western Blot.

Endotoxin Level:

Low Endotoxin less than 1 EU/mg (< 0.1 ng/mg)

Product Details

Grade: Crystallography grade

Target Details

Target: EIF6

Alternative Name: EIF6 ([EIF6 Products](#))

Background: Eukaryotic translation initiation factor 6 (eIF-6) (B(2)GCN homolog) (B4 integrin interactor) (CAB) (p27(BBP)),FUNCTION: Binds to the 60S ribosomal subunit and prevents its association with the 40S ribosomal subunit to form the 80S initiation complex in the cytoplasm (PubMed:10085284, PubMed:14654845, PubMed:21536732, PubMed:32669547). Behaves as a stimulatory translation initiation factor downstream insulin/growth factors. Is also involved in ribosome biogenesis. Associates with pre-60S subunits in the nucleus and is involved in its nuclear export. Cytoplasmic release of TIF6 from 60S subunits and nuclear relocalization is promoted by a RACK1 (RACK1)-dependent protein kinase C activity (PubMed:10085284, PubMed:14654845, PubMed:21536732). In tissues responsive to insulin, controls fatty acid synthesis and glycolysis by exerting translational control of adipogenic transcription factors such as CEBPB, CEBPD and ATF4 that have G/C rich or uORF in their 5'UTR. Required for ROS-dependent megakaryocyte maturation and platelets formation, controls the expression of mitochondrial respiratory chain genes involved in reactive oxygen species (ROS) synthesis (By similarity). Involved in miRNA-mediated gene silencing by the RNA-induced silencing complex (RISC). Required for both miRNA-mediated translational repression and miRNA-mediated cleavage of complementary mRNAs by RISC (PubMed:17507929). Modulates cell cycle progression and global translation of pre-B cells, its activation seems to be rate-limiting in tumorigenesis and tumor growth (By similarity). {ECO:0000255|HAMAP-Rule:MF_03132, ECO:0000269|PubMed:10085284, ECO:0000269|PubMed:14654845, ECO:0000269|PubMed:17507929, ECO:0000269|PubMed:21536732, ECO:0000269|PubMed:32669547}.

Molecular Weight: 26.6 kDa

UniProt: [P56537](#)

Pathways: [Ribonucleoprotein Complex Subunit Organization](#), [Ribosome Assembly](#)

Application Details

Application Notes: In addition to the applications listed above we expect the protein to work for functional studies as well. As the protein has not been tested for functional studies yet we cannot offer a

Application Details

	guarantee though.
Comment:	<p>ALiCE®, our Almost Living Cell-Free Expression System is based on a lysate obtained from <i>Nicotiana tabacum</i> c.v.. This contains all the protein expression machinery needed to produce even the most difficult-to-express proteins, including those that require post-translational modifications.</p> <p>During lysate production, the cell wall and other cellular components that are not required for protein production are removed, leaving only the protein production machinery and the mitochondria to drive the reaction. During our lysate completion steps, the additional components needed for protein production (amino acids, cofactors, etc.) are added to produce something that functions like a cell, but without the constraints of a living system - all that's needed is the DNA that codes for the desired protein!</p>
Restrictions:	For Research Use only

Handling

Format:	Liquid
Buffer:	The buffer composition is at the discretion of the manufacturer. If you have a special request, please contact us.
Handling Advice:	Avoid repeated freeze-thaw cycles.
Storage:	-80 °C
Storage Comment:	Store at -80°C.
Expiry Date:	Unlimited (if stored properly)

Size-exclusion chromatography-High Pressure Liquid Chromatography

Image 1.

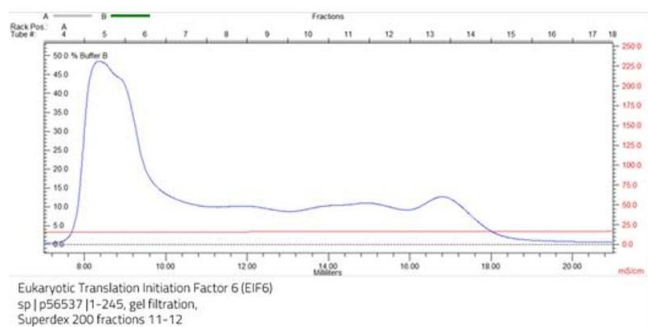
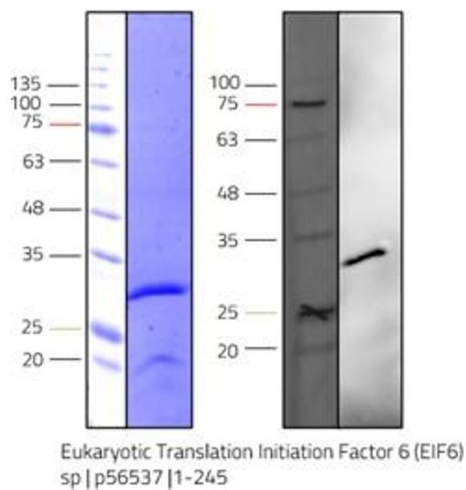


Image 2. „Crystallography Grade“ protein due to multi-step, protein-specific purification process



Western Blotting

Image 3.