



[Go to Product page](#)

Datasheet for ABIN308234

anti-RSV antibody

1 Image

Overview

Quantity:	1 mL
Target:	RSV
Reactivity:	Respiratory Syncytial Virus (RSV)
Host:	Rabbit
Clonality:	Polyclonal
Conjugate:	This RSV antibody is un-conjugated
Application:	ELISA, Immunofluorescence (IF), Western Blotting (WB), Immunohistochemistry (IHC), Neutralization (Neut)

Product Details

Immunogen:	UZ-purified RSV (long)
Specificity:	RSV (Group A and B, bovine classes)
Purification:	Hyperimmune Serum

Target Details

Target:	RSV
Abstract:	RSV Products
Target Type:	Virus

Application Details

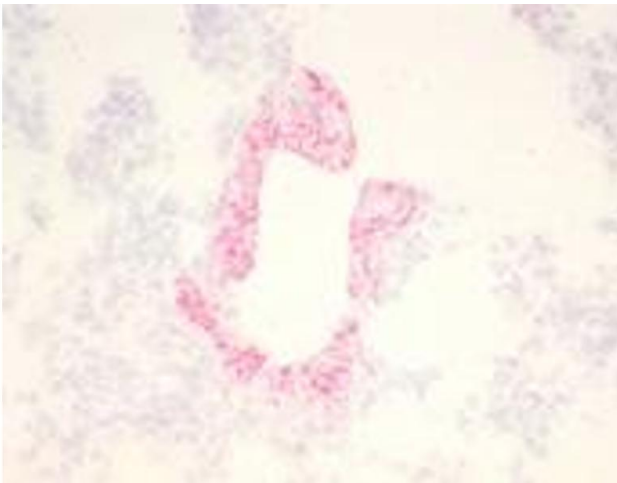
Restrictions: For Research Use only

Handling

Format: Liquid

Storage: 4 °C

Images



Immunohistochemistry

Image 1. Immunohistochemical staining (Frozen Sections) of RSV-infected lung tissue (Guinea pig)