



[Go to Product page](#)

Datasheet for ABIN3083185

## L1RE1 Protein (AA 1-338) (His tag)

### 4 Images

#### Overview

Quantity:	1 mg
Target:	L1RE1
Protein Characteristics:	AA 1-338
Origin:	Human
Source:	Escherichia coli (E. coli)
Protein Type:	Recombinant
Purification tag / Conjugate:	This L1RE1 protein is labelled with His tag.
Application:	Crystallization (Crys), ELISA, SDS-PAGE (SDS), Western Blotting (WB)

#### Product Details

Sequence: MGKKQNRKTG NSKTQSASPP PKERSSSPAT EQSWMENDFD ELREEGFRRS NYSELREDIQ  
TKGKEVENFE KNLEECITRI TNEKCLKEL MELKTKAREL REECRSLRSR CDQLEERVSA  
MEDEMNMENKR EGKFKREKRIK RNEQSLQEIW DYVKRPNLRL IGVPESDVEN GTKLENTLQD  
IIQENFPNLA RQANVQIQEI QRTPQRYSSR RATPRHIIVR FTKVEMKEKM LRAAREKGRV  
TLKKGPIRLT ADLSAETLQA RREWGPIFNI LKEKNFQPRI SYPAKLSFIS EGEIKYFIDK  
QMLRDFVTTR PALKELLKEA LNMERNNRYQ PLQNHAKM **HHHHHH**

#### C-terminal His-tag

- Characteristics:
- Made in Germany - from design to production - by highly experienced protein experts.
  - Human L1RE1 Protein (raised in E. Coli) purified by multi-step, protein-specific process to ensure crystallization grade.
  - State-of-the-art algorithm used for plasmid design (Gene synthesis).

This protein is a made to order protein and will be made for the first time for your order. Our

## Product Details

---

experts in the lab will ensure that you receive a correctly folded protein.

The big advantage of ordering our made-to-order proteins in comparison to ordering custom made proteins from other companies is that there is no financial obligation in case the protein cannot be expressed or purified.

In the unlikely event that the protein cannot be expressed or purified we do not charge anything (other companies might charge you for any performed steps in the expression process for custom-made proteins, e.g. fees might apply for the expression plasmid, the first expression experiments or purification optimization).

When you order this made-to-order protein you will only pay upon receipt of the correctly folded protein. With no financial risk on your end you can rest assured that our experienced protein experts will do everything to make sure that you receive the protein you ordered.

The concentration of our recombinant proteins is measured using the absorbance at 280nm. The protein's absorbance will be measured in several dilutions and is measured against its specific reference buffer.

The concentration of the protein is calculated using its specific absorption coefficient. We use the ExPASy's protParam tool to determine the absorption coefficient of each protein.

---

Purification:	The protein is purified from the cleared cell lysate using EDTA and DTT resistant His-tag capture materials. Eluate fractions are analyzed by SDS-PAGE. Protein containing fractions are subjected to a second purification step through size exclusion chromatography. Eluate fractions are analyzed by SDS-PAGE and Western blot.
Purity:	>95 % as determined by SDS PAGE, Size Exclusion Chromatography and Western Blot.
Sterility:	0.22 µm filtered
Endotoxin Level:	Endotoxin has not been removed. Please contact us if you require endotoxin removal.
Grade:	Crystallography grade

---

## Target Details

---

Target:	L1RE1
Alternative Name:	L1RE1 ( <a href="#">L1RE1 Products</a> )
Background:	Nucleic acid-binding protein which is essential for retrotransposition of LINE-1 elements in the genome. May function as a nucleic acid chaperone binding its own transcript and therefore preferentially mobilizing the transcript from which they are encoded. {ECO:0000269 PubMed:11158327, ECO:0000269 PubMed:21937507, ECO:0000269 PubMed:8945518}.

---

## Target Details

---

Molecular Weight: 41.0 kDa Including tag.

UniProt: [Q9UN81](#)

## Application Details

---

Application Notes: In addition to the applications listed above we expect the protein to work for functional studies as well. As the protein has not been tested for functional studies yet we cannot offer a guarantee though.

Restrictions: For Research Use only

## Handling

---

Format: Liquid

Buffer: in solution (20 mM Tris, pH 7.4, 100 mM NaCl)

Handling Advice: Avoid repeated freeze-thaw cycles.

Storage: -80 °C

Storage Comment: Store at -80°C.

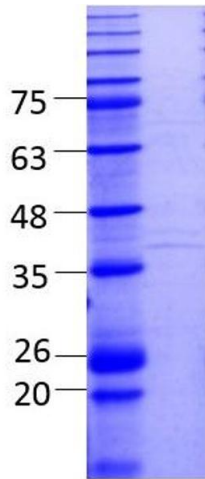
Expiry Date: Unlimited (if stored properly)

## Images

---

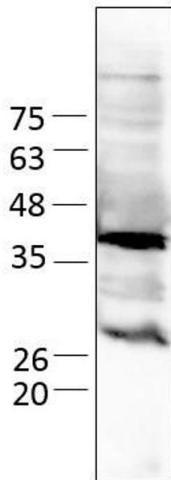


**Image 1.** „Crystallography Grade“ protein due to multi-step, protein-specific purification process



### SDS-PAGE

**Image 2.** L1RE1 (AA 1 - 338), gel filtration, fraction 13 - 14



### Western Blotting

**Image 3.** L1RE1 (AA 1 - 338), gel filtration, fraction 13 - 14

Please check the [product details page](#) for more images. Overall 4 images are available for ABIN3083185.