



[Go to Product page](#)

Datasheet for ABIN308396

## anti-MARCH10 antibody (Internal Region)

### 2 Images

#### Overview

|                      |  |
|----------------------|--|
| Quantity:            | 100 µg   |
| Target:              | MARCH10  |
| Binding Specificity: | Internal Region  |
| Reactivity:          | Human, Rat   |
| Host:                | Goat   |
| Clonality:           | Polyclonal   |
| Conjugate:           | This MARCH10 antibody is un-conjugated                   |
| Application:         | Western Blotting (WB), ELISA, Immunohistochemistry (IHC) |

#### Product Details

|                   |   |
|-------------------|---|
| Purpose:          | MARCH10   |
| Immunogen:        | Peptide with sequence C-SRNYPQPRTEE, from the internal region of the protein sequence according to NP_001094345.1, NP_689811.2.       |
| Sequence:         | SRNYPQPRTE E  |
| Isotype:          | IgG   |
| Specificity:      | This antibody is expected to recognise both reported isoforms (NP_001094345.1, NP_689811.2), which are identical.                     |
| Cross-Reactivity: | Cow, Human, Rat   |
| Purification:     | Purified from goat serum by ammonium sulphate precipitation followed by antigen affinity chromatography using the immunizing peptide. |

## Product Details

---

Grade: Verified

## Target Details

---

Target: MARCH10

Alternative Name: MARCH10 ([MARCH10 Products](#))

Background: MARCH10, membrane-associated ring finger (C3HC4) 10 , FLJ35757, MARCH-X, RNF190, ring finger protein 190

Gene ID: 162333, 303596

NCBI Accession: [NP\\_001094345](#), [NP\\_689811](#)

## Application Details

---

Application Notes: Immunohistochemistry: Paraffin embedded Human Testis. Recommended concentration: 5 µg/mL.

Western Blot: Approx. 90 kDa band observed in Rat Testis lysates (calculated MW of 90.5 kDa according to Human NP\_689811.2 and of 87.9 kDa according to Mouse NP\_766156.2).

Recommended concentration: 0.3-1 µg/mL. Primary incubation was 1 hour. An additional

Peptide ELISA: antibody detection limit dilution 1:8000.

Restrictions: For Research Use only

## Handling

---

Format: Liquid

Concentration: 0.5 mg/mL

Buffer: Supplied at 0.5 mg/mL in Tris saline, 0.02 % sodium azide, pH 7.3 with 0.5 % bovine serum albumin.

Preservative: Sodium azide

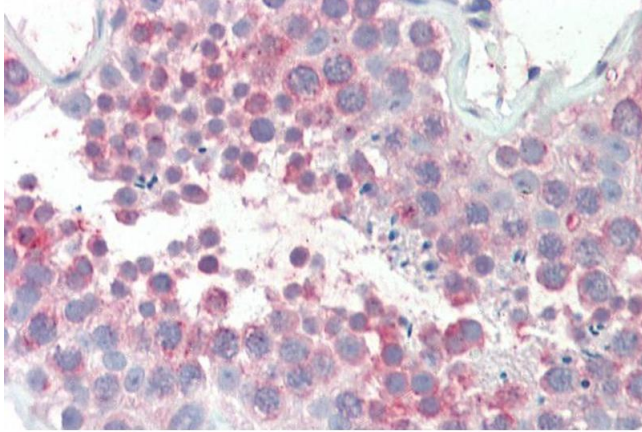
Precaution of Use: This product contains Sodium azide: a POISONOUS AND HAZARDOUS SUBSTANCE which should be handled by trained staff only.

Handling Advice: Minimize freezing and thawing.

Storage: -20 °C

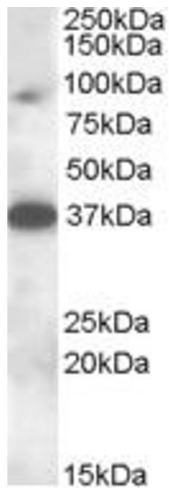
Storage Comment: Aliquot and store at -20°C, with minimal freeze/thawing. A working aliquot may be refrigerated

at 4°C for a few weeks and still remain viable.



#### Immunohistochemistry

**Image 1.** ABIN308396 (5µg/ml) staining of paraffin embedded Human Testis. Steamed antigen retrieval with citrate buffer pH 6, AP-staining.



#### Western Blotting

**Image 2.** ABIN308396 (0.3µg/ml) staining of Rat Testis lysate (35µg protein in RIPA buffer). Detected by chemiluminescence.