

Datasheet for ABIN308408  
**anti-MTHFD1 antibody (Internal Region)**[Go to Product page](#)

## 2 Images

## Overview

Quantity:	100 µg
Target:	MTHFD1
Binding Specificity:	Internal Region
Reactivity:	Human
Host:	Goat
Clonality:	Polyclonal
Conjugate:	This MTHFD1 antibody is un-conjugated
Application:	Western Blotting (WB), ELISA

## Product Details

Purpose:	MTHFD1
Immunogen:	Peptide with sequence RGD LNDCFIPCTPK, from the internal region of the protein sequence according to NP_005947.2.
Sequence:	RGD LNDCFIP CTPK
Isotype:	IgG
Cross-Reactivity:	Human, Mouse, Rat
Purification:	Purified from goat serum by ammonium sulphate precipitation followed by antigen affinity chromatography using the immunizing peptide.
Grade:	Verified

## Target Details

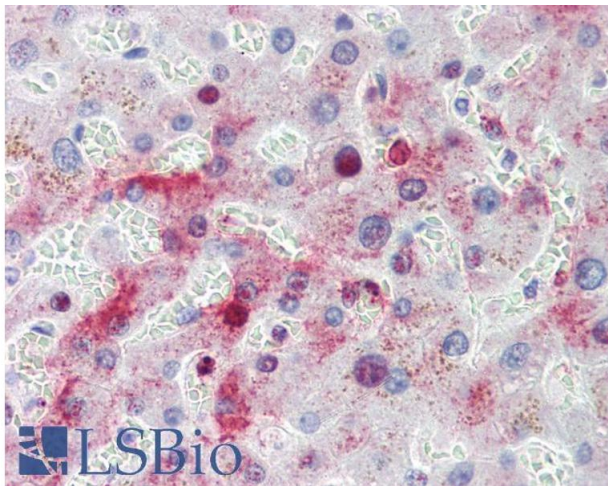
Target:	MTHFD1
Alternative Name:	MTHFD1 ( <a href="#">MTHFD1 Products</a> )
Background:	MTHFD1 , methylenetetrahydrofolate dehydrogenase (NADP+ dependent) 1, methenyltetrahydrofolate cyclohydrolase, formyltetrahydrofolate synthetase , MTHFC, MTHFD, 5,10-methylenetetrahydrofolate dehydrogenase, 5,10-methylenetetrahydrofolate cyclohydrolase, 1
Gene ID:	4522, 108156, 64300
NCBI Accession:	<a href="#">NP_005947</a>
Pathways:	<a href="#">Methionine Biosynthetic Process</a>

## Application Details

Application Notes:	Western Blot: Approx. 110 kDa band observed in Human Brain (substantia nigra) lysates (calculated MW of 102 kDa according to NP_005947.2). Recommended concentration: 1-3 µg/mL. Primary incubation was 1 hour. Peptide ELISA: antibody detection limit dilution 1:1000.
Restrictions:	For Research Use only

## Handling

Format:	Liquid
Concentration:	0.5 mg/mL
Buffer:	Supplied at 0.5 mg/mL in Tris saline, 0.02 % sodium azide, pH 7.3 with 0.5 % bovine serum albumin.
Preservative:	Sodium azide
Precaution of Use:	This product contains Sodium azide: a POISONOUS AND HAZARDOUS SUBSTANCE which should be handled by trained staff only.
Handling Advice:	Minimize freezing and thawing.
Storage:	-20 °C
Storage Comment:	Aliquot and store at -20°C, with minimal freeze/thawing. A working aliquot may be refrigerated at 4°C for a few weeks and still remain viable.



#### Immunohistochemistry

**Image 1.** ABIN308408 (3.75µg/ml) staining of paraffin embedded Human Liver. Steamed antigen retrieval with citrate buffer pH 6, AP-staining. This data is from a previous batch, not on sale.



#### Western Blotting

**Image 2.** ABIN308408 (1µg/ml) staining of Human Substantia Nigra lysate (35µg protein in RIPA buffer). Detected by chemiluminescence.