

Datasheet for ABIN308410  
**anti-GRIA4 antibody (Internal Region)**[Go to Product page](#)

## 3 Images

## Overview

Quantity:	100 µg
Target:	GRIA4
Binding Specificity:	Internal Region
Reactivity:	Human
Host:	Goat
Clonality:	Polyclonal
Conjugate:	This GRIA4 antibody is un-conjugated
Application:	Western Blotting (WB), ELISA, Immunohistochemistry (IHC)

## Product Details

Purpose:	GRIA4
Immunogen:	Peptide with sequence C-KKLDQREYPGSETP, from the internal region of the protein sequence according to NP_000820.3, NP_001070711.1, NP_001070712.1.
Sequence:	KKLDQREYPG SETP
Isotype:	IgG
Specificity:	This antibody is expected to recognize all reported isoforms (NP_000820.3, NP_001070711.1, NP_001070712.1). Reported variants NP_001070712.1 and NP_001106283.1 represent identical protein.
Cross-Reactivity:	Cow, Human, Mouse, Rat
Purification:	Purified from goat serum by ammonium sulphate precipitation followed by antigen affinity

## Product Details

	chromatography using the immunizing peptide.
Grade:	Verified

## Target Details

Target:	GRIA4
Alternative Name:	GRIA4 ( <a href="#">GRIA4 Products</a> )
Background:	GRIA4 , glutamate receptor, ionotropic, AMPA 4 , GLUR4, GLUR4C, GLURD, AMPA-selective glutamate receptor 4
Gene ID:	2893, 14802, 29629
NCBI Accession:	<a href="#">NP_000820</a> , <a href="#">NP_001070711</a> , <a href="#">NP_001070712</a>
Pathways:	<a href="#">PI3K-Akt Signaling</a>

## Application Details

Application Notes:	<p>Immunohistochemistry: In paraffin embedded Human Cortex shows cytoplasm staining of neuronal cells. Recommended concentration, 5-10 µg/mL.</p> <p>Western Blot: Approx.100 kDa band observed in Human Brain (Cerebellum) lysates (calculated MW of 99.2 kDa according to NP_001070711.2). Recommended concentration: 1-2 µg/mL.</p> <p>Primary incubation 1 hour at room temperature.</p> <p>Peptide ELISA: antibody detection limit dilution 1:128000.</p>
Restrictions:	For Research Use only

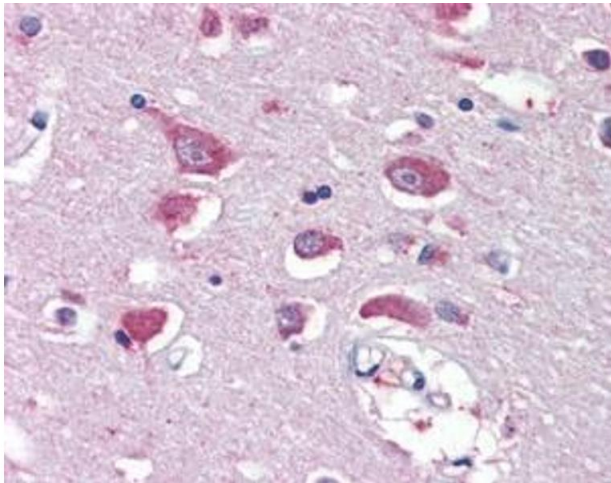
## Handling

Format:	Liquid
Concentration:	0.5 mg/mL
Buffer:	Supplied at 0.5 mg/mL in Tris saline, 0.02 % sodium azide, pH 7.3 with 0.5 % bovine serum albumin.
Preservative:	Sodium azide
Precaution of Use:	This product contains Sodium azide: a POISONOUS AND HAZARDOUS SUBSTANCE which should be handled by trained staff only.
Handling Advice:	Minimize freezing and thawing.

Handling

Storage:	-20 °C
Storage Comment:	Aliquot and store at -20°C, with minimal freeze/thawing. A working aliquot may be refrigerated at 4°C for a few weeks and still remain viable.

Images



Immunohistochemistry

**Image 1.** ABIN308410 (5µg/ml) staining of paraffin embedded Human Cortex. Steamed antigen retrieval with citrate buffer pH 6, AP-staining.



**Image 2.** ABIN308410 (0.3µg/ml) staining of Human Cerebellum lysate (35µg protein in RIPA buffer). Primary incubation was 1 hour. Detected by chemiluminescence.



Western Blotting

**Image 3.** ABIN308410 (2µg/ml) staining of Human Cerebellum lysate (35µg protein in RIPA buffer). Detected by chemiluminescence.