

Datasheet for ABIN308413
anti-ERN1 antibody (Internal Region)[Go to Product page](#)

2 Images

Overview

Quantity:	100 µg
Target:	ERN1
Binding Specificity:	Internal Region
Reactivity:	Human
Host:	Goat
Clonality:	Polyclonal
Conjugate:	This ERN1 antibody is un-conjugated
Application:	Western Blotting (WB), ELISA, Flow Cytometry (FACS)

Product Details

Purpose:	ERN1 / IRE1a
Immunogen:	Peptide with sequence C-PNAHGKIKAMISD, from the internal region of the protein sequence according to NP_001424.3.
Sequence:	PNAHGKIKAM ISD
Isotype:	IgG
Cross-Reactivity:	Cow, Dog, Human, Mouse, Pig, Rat
Purification:	Purified from goat serum by ammonium sulphate precipitation followed by antigen affinity chromatography using the immunizing peptide.
Grade:	Verified

Target Details

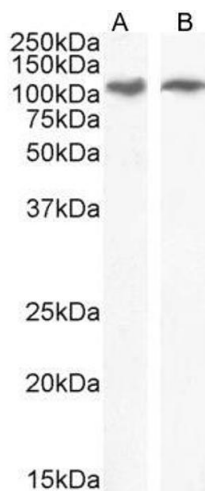
Target:	ERN1
Alternative Name:	ERN1 (ERN1 Products)
Background:	ERN1, IRE1, endoplasmic reticulum to nucleus signaling 1, FLJ30999, IRE1P, MGC163277, MGC163279, ER to nucleus signalling 1, endoplasmic reticulum to nucleus signalling 1, inositol-requiring 1, protein kinase/endoribonuclease, IRE1a, IRE1-alpha
Gene ID:	2081, 78943, 498013
NCBI Accession:	NP_001424
Pathways:	ER-Nucleus Signaling , Unfolded Protein Response

Application Details

Application Notes:	Western Blot: Approx 110 kDa band observed in Human Pancreas and Duodenum lysates (calculated MW of 110 kDa according to NP_001424.3). Recommended concentration: 0.1-0.3 µg/mL. Primary incubation 1 hour at room temperature. Peptide ELISA: antibody detection limit dilution 1:16000.
Comment:	Flow Cytometry: Flow cytometric analysis of HeLa cells. Recommended concentration: 10ug/ml.
Restrictions:	For Research Use only

Handling

Format:	Liquid
Concentration:	0.5 mg/mL
Buffer:	Supplied at 0.5 mg/mL in Tris saline, 0.02 % sodium azide, pH 7.3 with 0.5 % bovine serum albumin.
Preservative:	Sodium azide
Precaution of Use:	This product contains Sodium azide: a POISONOUS AND HAZARDOUS SUBSTANCE which should be handled by trained staff only.
Handling Advice:	Minimize freezing and thawing.
Storage:	-20 °C
Storage Comment:	Aliquot and store at -20°C, with minimal freeze/thawing. A working aliquot may be refrigerated at 4°C for a few weeks and still remain viable.



Western Blotting

Image 1. ABIN308413 (0.3µg/ml) staining of Human Duodenum (A) and (0.1ug/ml) Pancreas (B) lysate (35µg protein in RIPA buffer). Detected by chemiluminescence



Image 2. ABIN308413 (0.03µg/ml) staining of Human Pancreas lysate (35µg protein in RIPA buffer). Primary incubation was 1 hour. Detected by chemiluminescence.