

Datasheet for ABIN308415
anti-CLCA1 antibody (AA 872-884)

2 Images

[Go to Product page](#)

Overview

Quantity:	100 µg
Target:	CLCA1
Binding Specificity:	AA 872-884
Reactivity:	Human
Host:	Goat
Clonality:	Polyclonal
Conjugate:	This CLCA1 antibody is un-conjugated
Application:	Western Blotting (WB), ELISA

Product Details

Purpose:	CLCA1 (aa872-884)
Immunogen:	Peptide with sequence PETPSPDETSAPC, from the internal region of the protein sequence according to NP_001276.2.
Sequence:	PETPSPDETS APC
Isotype:	IgG
Cross-Reactivity:	Human
Purification:	Purified from goat serum by ammonium sulphate precipitation followed by antigen affinity chromatography using the immunizing peptide.
Grade:	Verified

Target Details

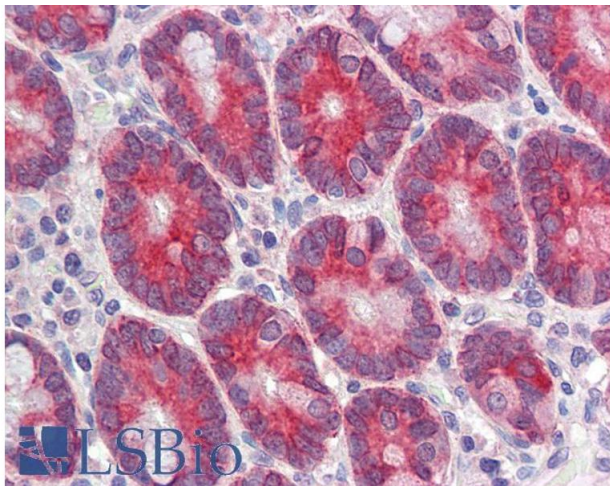
Target:	CLCA1
Alternative Name:	CLCA1 (CLCA1 Products)
Background:	CLCA1, chloride channel, calcium activated, family member 1, CaCC,
Gene ID:	1179
NCBI Accession:	NP_001276

Application Details

Application Notes:	Western Blot: Approx. 100 kDa band observed in Human Kidney and Lung lysates (calculated MW of 100 kDa according to NP_001276.2). Recommended concentration: 0.3-1 µg/mL. Primary incubation was 1 hour. Peptide ELISA: antibody detection limit dilution 1:64000.
Restrictions:	For Research Use only

Handling

Format:	Liquid
Concentration:	0.5 mg/mL
Buffer:	Supplied at 0.5 mg/mL in Tris saline, 0.02 % sodium azide, pH 7.3 with 0.5 % bovine serum albumin.
Preservative:	Sodium azide
Precaution of Use:	This product contains Sodium azide: a POISONOUS AND HAZARDOUS SUBSTANCE which should be handled by trained staff only.
Handling Advice:	Minimize freezing and thawing.
Storage:	-20 °C
Storage Comment:	Aliquot and store at -20°C, with minimal freeze/thawing. A working aliquot may be refrigerated at 4°C for a few weeks and still remain viable.



Immunohistochemistry

Image 1. ABIN308415 (3.75µg/ml) staining of paraffin embedded Human Small Intestine. Steamed antigen retrieval with citrate buffer pH 6, AP-staining. This data is from a previous batch, not on sale.

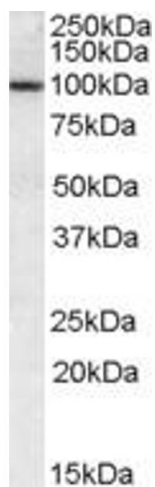


Image 2. ABIN308415 (0.3µg/ml) staining of Human Lung lysate (35µg protein in RIPA buffer). Primary incubation was 1 hour. Detected by chemiluminescence.