

Datasheet for ABIN308424

anti-LRP4 antibody (Internal Region)



[Go to Product page](#)

2 Images

Overview

Quantity:	100 µg
Target:	LRP4
Binding Specificity:	Internal Region
Reactivity:	Human
Host:	Goat
Clonality:	Polyclonal
Conjugate:	This LRP4 antibody is un-conjugated
Application:	Western Blotting (WB), Immunohistochemistry (IHC), ELISA

Product Details

Purpose:	LRP4 / LRP10
Immunogen:	Peptide with sequence C-SNPSYRTSTQEVK , from the internal region of the protein sequence according to NP_002325.2.
Sequence:	SNPSYRTSTQ EVK
Isotype:	IgG
Cross-Reactivity:	Cow, Human, Mouse, Rat
Purification:	Purified from goat serum by ammonium sulphate precipitation followed by antigen affinity chromatography using the immunizing peptide.
Grade:	Verified

Target Details

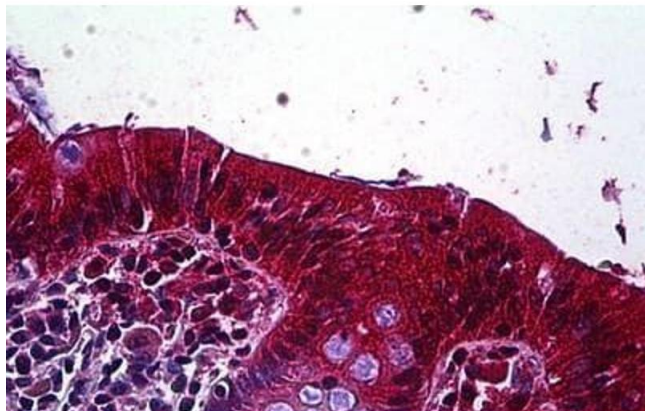
Target:	LRP4
Alternative Name:	LRP4 (LRP4 Products)
Background:	LRP4, low density lipoprotein receptor-related protein 4, KIAA0816, LRP10, MEGF7, low-density lipoprotein receptor-related protein 4
Gene ID:	4038, 228357, 83469
NCBI Accession:	NP_002325
Pathways:	Skeletal Muscle Fiber Development

Application Details

Application Notes:	Immunohistochemistry: Paraffin embedded Human Colon. Recommended concentration: 3.75 µg/mL. Western Blot: Approx. 200 kDa band observed in Human Brain (Cerebral Cortex) lysates (calculated MW of 212 kDa according to NP_002325.2). Recommended concentration: 0.1-0.3 µg/mL. Peptide ELISA: antibody detection limit dilution 1:32000.
Restrictions:	For Research Use only

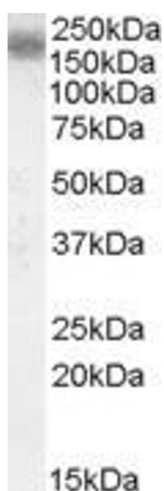
Handling

Format:	Liquid
Concentration:	0.5 mg/mL
Buffer:	Supplied at 0.5 mg/mL in Tris saline, 0.02 % sodium azide, pH 7.3 with 0.5 % bovine serum albumin.
Preservative:	Sodium azide
Precaution of Use:	This product contains Sodium azide: a POISONOUS AND HAZARDOUS SUBSTANCE which should be handled by trained staff only.
Handling Advice:	Minimize freezing and thawing.
Storage:	-20 °C
Storage Comment:	Aliquot and store at -20°C, with minimal freeze/thawing. A working aliquot may be refrigerated at 4°C for a few weeks and still remain viable.



Immunohistochemistry

Image 1. ABIN308424 (3.75µg/ml) staining of paraffin embedded Human Colon. Steamed antigen retrieval with citrate buffer pH 6, AP-staining.



Western Blotting

Image 2. ABIN308424 (0.1µg/ml) staining of Human Cerebral Cortex lysate (35µg protein in RIPA buffer). Primary incubation was 1 hour. Detected by chemiluminescence.