

Datasheet for ABIN308426
anti-CLTA antibody (Internal Region)[Go to Product page](#)

2 Images

Overview

Quantity:	100 µg
Target:	CLTA
Binding Specificity:	Internal Region
Reactivity:	Human
Host:	Goat
Clonality:	Polyclonal
Conjugate:	This CLTA antibody is un-conjugated
Application:	Western Blotting (WB), Immunohistochemistry (IHC), ELISA

Product Details

Purpose:	CTLA + CTLB
Immunogen:	Peptide with sequence CDFNPKSSKQAKD, from the internal region of the protein sequence according to NP_001824.1, NP_009027.1, NP_001070145.1, NP_001825.1, NP_009028.1.
Sequence:	CDFNPKSSKQ AKD
Isotype:	IgG
Specificity:	This antibody is expected to recognize all reported isoforms of light chains a and b.
Cross-Reactivity:	Cow, Dog, Human, Mouse, Rat
Purification:	Purified from goat serum by ammonium sulphate precipitation followed by antigen affinity chromatography using the immunizing peptide.
Grade:	Verified

Target Details

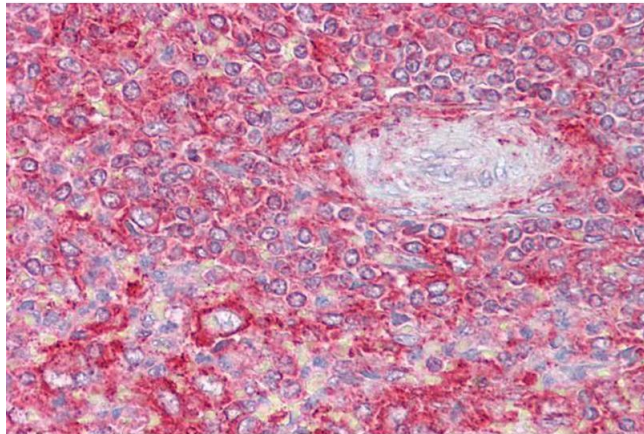
Target:	CLTA
Alternative Name:	CLTA (CLTA Products)
Background:	CLTA, CTLB, clathrin, light chain (Lca), LCA, clathrin, light polypeptide (Lca), clathrin, light polypeptide A, clathrin, light chain (Lcb), LCB
Gene ID:	1211, 1212, 12757
NCBI Accession:	NP_001824 , NP_009027 , NP_001070145 , NP_001825 , NP_009028
Pathways:	EGFR Signaling Pathway , Neurotrophin Signaling Pathway , EGFR Downregulation

Application Details

Application Notes:	Immunohistochemistry: Paraffin embedded Human Spleen. Recommended concentration: 2.5 µg/mL. Western Blot: Approx. 35 kDa and 22-23 kDa bands observed in Human Brain (Frontal Cortex) lysates (calculated MW of 23.2 kDa according to NP_001825.1). The observed molecular weight of ~35 kDa corresponds to earlier findings in literature with different anti Peptide ELISA: antibody detection limit dilution 1:32000.
Restrictions:	For Research Use only

Handling

Format:	Liquid
Concentration:	0.5 mg/mL
Buffer:	Supplied at 0.5 mg/mL in Tris saline, 0.02 % sodium azide, pH 7.3 with 0.5 % bovine serum albumin.
Preservative:	Sodium azide
Precaution of Use:	This product contains Sodium azide: a POISONOUS AND HAZARDOUS SUBSTANCE which should be handled by trained staff only.
Handling Advice:	Minimize freezing and thawing.
Storage:	-20 °C
Storage Comment:	Aliquot and store at -20°C, with minimal freeze/thawing. A working aliquot may be refrigerated at 4°C for a few weeks and still remain viable.



Immunohistochemistry

Image 1. ABIN308426 (2.5µg/ml) staining of paraffin embedded Human Spleen. Steamed antigen retrieval with citrate buffer pH 6, AP-staining.

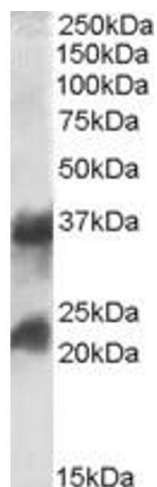


Image 2. ABIN308426 (0.1µg/ml) staining of Human Frontal Cortex lysate (35µg protein in RIPA buffer). Primary incubation was 1 hour. Detected by chemiluminescence.