

Datasheet for ABIN308427

**anti-HOXD10 antibody (Internal Region)**[Go to Product page](#)**2** Images

## Overview

|                      |  |
|----------------------|--|
| Quantity:            | 100 µg   |
| Target:              | HOXD10   |
| Binding Specificity: | Internal Region  |
| Reactivity:          | Human  |
| Host:                | Goat   |
| Clonality:           | Polyclonal   |
| Conjugate:           | This HOXD10 antibody is un-conjugated                    |
| Application:         | ELISA, Immunohistochemistry (IHC), Flow Cytometry (FACS) |

## Product Details

|                   |   |
|-------------------|---|
| Purpose:          | HOXD10  |
| Immunogen:        | Peptide with sequence PNRSCRIEQPVTQQ, from the internal region of the protein sequence according to NP_002139.2.                      |
| Sequence:         | PNRSCRIEQP VTQQ   |
| Isotype:          | IgG   |
| Cross-Reactivity: | Cow, Horse, Human, Mouse, Rat   |
| Purification:     | Purified from goat serum by ammonium sulphate precipitation followed by antigen affinity chromatography using the immunizing peptide. |
| Grade:            | Verified  |

## Target Details

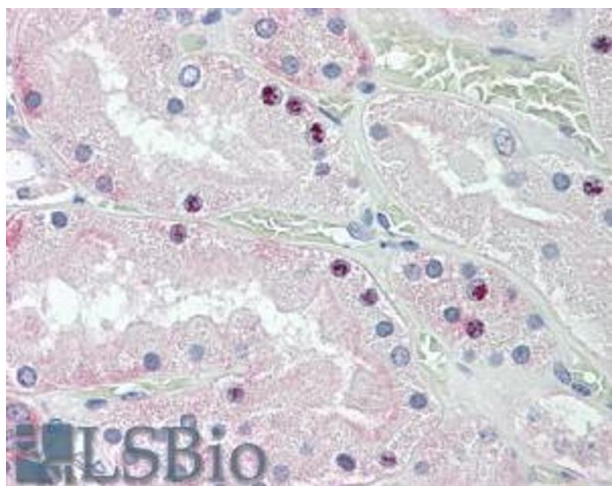
|                   |  |
|-------------------|--|
| Target:           | HOXD10   |
| Alternative Name: | HOXD10 ( <a href="#">HOXD10 Products</a> )                                     |
| Background:       | HOXD10, homeobox D10, HOX4, HOX4D, HOX4E, Hox-4.4, homeo box 4D, homeo box D10 |
| Gene ID:          | 3236, 15430, 303991  |
| NCBI Accession:   | <a href="#">NP_002139</a>  |

## Application Details

|                    |   |
|--------------------|---|
| Application Notes: | <p>Immunohistochemistry: In paraffin embedded Human Kidney shows nuclear staining in some epithelial cells of PCT. Recommended concentration, 3-5 µg/mL.</p> <p>Western Blot: Preliminary testing showed a band at approx 37 kDa in Human Kidney lysate after 3 µg/mL antibody staining (calculated MW of 38.4 kDa according to NP_002139.2). Primary incubation 1 hour at room temperature.</p> <p>Peptide ELISA: antibody detection limit dilution 1:32000.</p> |
| Comment:           | <b>Flow Cytometry:</b> Flow cytometric analysis of HEK293 cells. Recommended concentration: 10ug/ml.  |
| Restrictions:      | For Research Use only   |

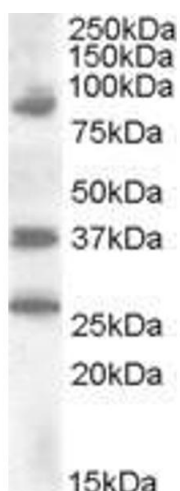
## Handling

|                    |  |
|--------------------|--|
| Format:            | Liquid   |
| Concentration:     | 0.5 mg/mL  |
| Buffer:            | Supplied at 0.5 mg/mL in Tris saline, 0.02 % sodium azide, pH 7.3 with 0.5 % bovine serum albumin.   |
| Preservative:      | Sodium azide   |
| Precaution of Use: | This product contains Sodium azide: a POISONOUS AND HAZARDOUS SUBSTANCE which should be handled by trained staff only.                         |
| Handling Advice:   | Minimize freezing and thawing.   |
| Storage:           | -20 °C   |
| Storage Comment:   | Aliquot and store at -20°C, with minimal freeze/thawing. A working aliquot may be refrigerated at 4°C for a few weeks and still remain viable. |



#### Immunohistochemistry

**Image 1.** ABIN308427 (3.8 µg/ml) staining of paraffin embedded Human Kidney. Steamed antigen retrieval with citrate buffer pH 6, AP-staining.



#### Western Blotting

**Image 2.** ABIN308427 (0.2 µg/ml) staining of Human Kidney lysate (35 µg protein in RIPA buffer). Primary incubation was 1 hour. Detected by chemiluminescence.