

Datasheet for ABIN308431
anti-SAR1A antibody (Internal Region)

3 Images

[Go to Product page](#)

Overview

Quantity:	100 µg
Target:	SAR1A
Binding Specificity:	Internal Region
Reactivity:	Human, Mouse
Host:	Goat
Clonality:	Polyclonal
Conjugate:	This SAR1A antibody is un-conjugated
Application:	Western Blotting (WB), ELISA, Immunohistochemistry (IHC)

Product Details

Purpose:	SAR1
Immunogen:	Peptide with sequence C-HSRLVESKVELNA, from the internal region of the protein sequence according to NP_064535.1.
Sequence:	HSRLVESKVE LNA
Isotype:	IgG
Cross-Reactivity:	Human, Mouse, Rat
Purification:	Purified from goat serum by ammonium sulphate precipitation followed by antigen affinity chromatography using the immunizing peptide.
Grade:	Verified

Target Details

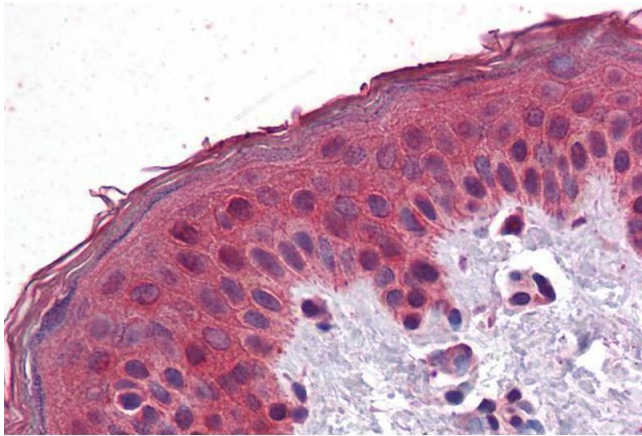
Target:	SAR1A
Alternative Name:	SAR1A (SAR1A Products)
Background:	SAR1A, SAR1 gene homolog A (S. cerevisiae), SAR1, SARA1, Sara, masra2, OTTHUMP00000060603, SAR1a gene homolog 1
Gene ID:	56681, 20224, 361842
NCBI Accession:	NP_064535

Application Details

Application Notes:	Immunohistochemistry: Paraffin embedded Human Skin and Small Intestine. Recommended concentration: 3.75 µg/mL. Western Blot: Approx. 23 kDa band observed in lysates of NIH3T3 (calculated MW of 22.4 kDa according to Human NP_064535.1 and to Mouse NP_033146.1). Recommended concentration: 0.1-0.3 µg/mL. Primary incubation was 1 hour. Peptide ELISA: antibody detection limit dilution 1:32000.
Restrictions:	For Research Use only

Handling

Format:	Liquid
Concentration:	0.5 mg/mL
Buffer:	Supplied at 0.5 mg/mL in Tris saline, 0.02 % sodium azide, pH 7.3 with 0.5 % bovine serum albumin.
Preservative:	Sodium azide
Precaution of Use:	This product contains Sodium azide: a POISONOUS AND HAZARDOUS SUBSTANCE which should be handled by trained staff only.
Handling Advice:	Minimize freezing and thawing.
Storage:	-20 °C
Storage Comment:	Aliquot and store at -20°C, with minimal freeze/thawing. A working aliquot may be refrigerated at 4°C for a few weeks and still remain viable.



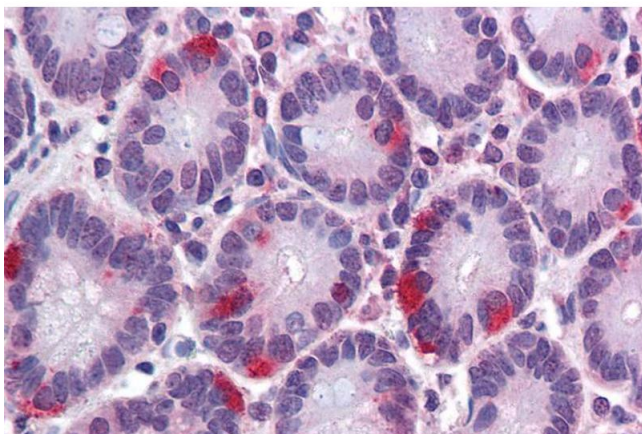
Immunohistochemistry

Image 1. ABIN308431 (3.75µg/ml) staining of paraffin embedded Human Skin. Steamed antigen retrieval with citrate buffer pH 6, AP-staining.



Western Blotting

Image 2. ABIN308431 (0.1µg/ml) staining of NIH3T3 lysate (35µg protein in RIPA buffer). Detected by chemiluminescence.



Immunohistochemistry

Image 3. ABIN308431 (3.75µg/ml) staining of paraffin embedded Human Small Intestine. Steamed antigen retrieval with citrate buffer pH 6, AP-staining.