

Datasheet for ABIN308436  
**anti-Clusterin antibody (C-Term)**



[Go to Product page](#)

4 Images

### Overview

Quantity:	100 µg
Target:	Clusterin (CLU)
Binding Specificity:	C-Term
Reactivity:	Rat, Mouse
Host:	Goat
Clonality:	Polyclonal
Conjugate:	This Clusterin antibody is un-conjugated
Application:	Western Blotting (WB), ELISA, Immunofluorescence (IF)

### Product Details

Purpose:	Clusterin / ApoJ (mouse)
Immunogen:	Peptide with sequence C-EKALQEYRRKSRAE, from the C Terminus of the protein sequence according to NP_038520.1.
Sequence:	EKALQEYRRK SRAE
Isotype:	IgG
Cross-Reactivity:	Mouse, Rat
Purification:	Purified from goat serum by ammonium sulphate precipitation followed by antigen affinity chromatography using the immunizing peptide.
Grade:	Verified

## Target Details

---

Target:	Clusterin (CLU)
Alternative Name:	Clu ( <a href="#">CLU Products</a> )
Background:	ApoJ, clusterin, Clu, AI893575, Cli, D14Ucla3, SP-40, Sgp-2, Sgp2, Sugp-2, Apolipoprotein J, complement lysis inhibitor, testosterone repressed prostate message
Gene ID:	12759, 24854
NCBI Accession:	<a href="#">NP_038520</a>
Pathways:	<a href="#">Apoptosis, Negative Regulation of intrinsic apoptotic Signaling</a>

## Application Details

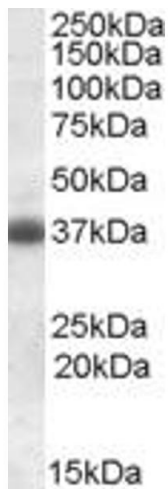
---

Application Notes:	Western Blot: Approx. 38 kDa band observed in Mouse and Rat Brain lysates.(calculated MW of 51.7 kDa according to Mouse NP_038520.2 and 51.4 kDa according to Rat XP_006252156.1). This molecular weight is routinely observed by other sources and thought to co Peptide ELISA: antibody detection limit dilution 1:64000.
Comment:	<b>Immunofluorescence:</b> Strong expression of the protein seen in the membranes and cytoplasm of PC12 cells. Recommended concentration: 10µg/ml.
Restrictions:	For Research Use only

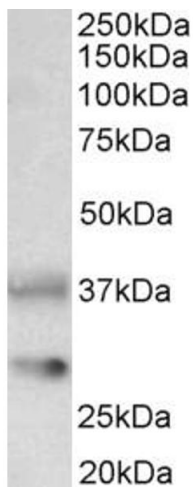
## Handling

---

Format:	Liquid
Concentration:	0.5 mg/mL
Buffer:	Supplied at 0.5 mg/mL in Tris saline, 0.02 % sodium azide, pH 7.3 with 0.5 % bovine serum albumin.
Preservative:	Sodium azide
Precaution of Use:	This product contains Sodium azide: a POISONOUS AND HAZARDOUS SUBSTANCE which should be handled by trained staff only.
Handling Advice:	Minimize freezing and thawing.
Storage:	-20 °C
Storage Comment:	Aliquot and store at -20°C, with minimal freeze/thawing. A working aliquot may be refrigerated at 4°C for a few weeks and still remain viable.

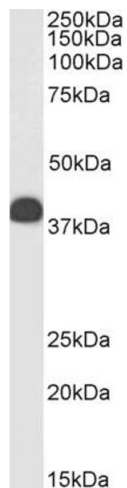


**Image 1.** ABIN308436 (0.3µg/ml) staining of Rat Brain lysate (35µg protein in RIPA buffer). Primary incubation was 1 hour. Detected by chemiluminescence.



#### Western Blotting

**Image 2.** ABIN308436 (0.1µg/ml) staining of Rat Brain lysate (35µg protein in RIPA buffer). Primary incubation was 1 hour. Detected by chemiluminescence.



#### Western Blotting

**Image 3.** ABIN308436 (0.3µg/ml) staining of Human Testes lysate (35µg protein in RIPA buffer). Primary incubation was 1 hour. Detected by chemiluminescence.

Please check the [product details page](#) for more images. Overall 4 images are available for ABIN308436.