

Datasheet for ABIN308442
anti-DPM1 antibody (N-Term)[Go to Product page](#)

1 Image

Overview

Quantity:	100 µg
Target:	DPM1
Binding Specificity:	N-Term
Reactivity:	Rat
Host:	Goat
Clonality:	Polyclonal
Conjugate:	This DPM1 antibody is un-conjugated
Application:	Western Blotting (WB), ELISA

Product Details

Purpose:	Dpm1 (mouse)
Immunogen:	Peptide with sequence PQGRSSRQDKYS-C, from the N Terminus of the protein sequence according to NP_034202.1.
Sequence:	PQGRSSRQDK YS
Isotype:	IgG
Cross-Reactivity:	Mouse, Rat
Purification:	Purified from goat serum by ammonium sulphate precipitation followed by antigen affinity chromatography using the immunizing peptide.
Grade:	Verified

Target Details

Target:	DPM1
Alternative Name:	Dpm1 (DPM1 Products)
Background:	DPM1, dolichyl-phosphate mannosyltransferase polypeptide 1, catalytic subunit, RP23-391M18.1, AI118379, AI194292, OTTMUSP00000017164, dolichol monophosphate mannose synthase, dolichyl-phosphate mannosyltransferase polypeptide 1
Gene ID:	13480, 296394
NCBI Accession:	NP_034202
Pathways:	Inositol Metabolic Process

Application Details

Application Notes:	Western Blot: Approx. 29 kDa band observed in Rat Liver lysates (calculated MW of 29.2 kDa according to Mouse NP_034202.1 and to Rat NP_001100014.1). Recommended concentration: 0.1-0.3 µg/mL. Peptide ELISA: antibody detection limit dilution 1:64000.
Restrictions:	For Research Use only

Handling

Format:	Liquid
Concentration:	0.5 mg/mL
Buffer:	Supplied at 0.5 mg/mL in Tris saline, 0.02 % sodium azide, pH 7.3 with 0.5 % bovine serum albumin.
Preservative:	Sodium azide
Precaution of Use:	This product contains Sodium azide: a POISONOUS AND HAZARDOUS SUBSTANCE which should be handled by trained staff only.
Handling Advice:	Minimize freezing and thawing.
Storage:	-20 °C
Storage Comment:	Aliquot and store at -20°C, with minimal freeze/thawing. A working aliquot may be refrigerated at 4°C for a few weeks and still remain viable.

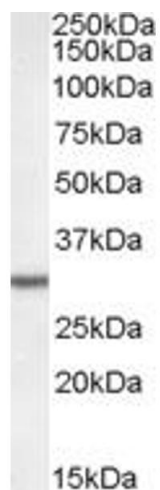


Image 1. ABIN308442 (0.05µg/ml) staining of Rat Liver lysate (35µg protein in RIPA buffer). Primary incubation was 1 hour. Detected by chemiluminescence.