



[Go to Product page](#)

Datasheet for ABIN308446
anti-LIPG antibody (Internal Region)

1 Image

Overview

Quantity:	100 µg
Target:	LIPG
Binding Specificity:	Internal Region
Reactivity:	Human
Host:	Goat
Clonality:	Polyclonal
Conjugate:	This LIPG antibody is un-conjugated
Application:	Western Blotting (WB), ELISA

Product Details

Purpose:	Endothelial lipase
Immunogen:	Peptide with sequence C-RFNLRTSKDPEHEG, from the internal region of the protein sequence according to NP_006024.1.
Sequence:	RFNLRTSKDP EHEG
Isotype:	IgG
Cross-Reactivity:	Human
Purification:	Purified from goat serum by ammonium sulphate precipitation followed by antigen affinity chromatography using the immunizing peptide.
Grade:	Verified

Target Details

Target:	LIPG
Alternative Name:	LIPG (LIPG Products)
Background:	Endothelial lipase, lipase, endothelial, LIPG, EDL, EL, PRO719, endothelial cell-derived lipase, lipoprotein lipase H
Gene ID:	9388
NCBI Accession:	NP_006024

Application Details

Application Notes:	Western Blot: Approx. 70 kDa band observed in Human Liver lysates (calculated MW of 56.8 kDa according to NP_006024.1). The observed molecular weight corresponds to earlier findings in literature with different antibodies (Gauster et al , J Clin Endocrinol Peptide ELISA: antibody detection limit dilution 1:16000.
Restrictions:	For Research Use only

Handling

Format:	Liquid
Concentration:	0.5 mg/mL
Buffer:	Supplied at 0.5 mg/mL in Tris saline, 0.02 % sodium azide, pH 7.3 with 0.5 % bovine serum albumin.
Preservative:	Sodium azide
Precaution of Use:	This product contains Sodium azide: a POISONOUS AND HAZARDOUS SUBSTANCE which should be handled by trained staff only.
Handling Advice:	Minimize freezing and thawing.
Storage:	-20 °C
Storage Comment:	Aliquot and store at -20°C, with minimal freeze/thawing. A working aliquot may be refrigerated at 4°C for a few weeks and still remain viable.

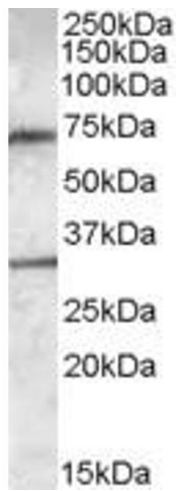


Image 1. ABIN308446 (0.3 μ g/ml) staining of Human Liver lysate (35 μ g protein in RIPA buffer). Primary incubation was 1 hour. Detected by chemiluminescence.