

Datasheet for ABIN308450
anti-ERP29 antibody (C-Term)[Go to Product page](#)

1 Image

Overview

Quantity:	100 µg
Target:	ERP29
Binding Specificity:	C-Term
Reactivity:	Human, Rat
Host:	Goat
Clonality:	Polyclonal
Conjugate:	This ERP29 antibody is un-conjugated
Application:	Western Blotting (WB), ELISA, Immunofluorescence (IF)

Product Details

Purpose:	ERP29
Immunogen:	Peptide with sequence C-EKNKMSDGKKEELQ, from the C Terminus of the protein sequence according to NP_006808.1.
Sequence:	EKNKMSDGKK EELQ
Isotype:	IgG
Specificity:	This antibody is expected to recognize isoform 1 (NP_006808.1) only.
Cross-Reactivity:	Cow, Dog, Human, Pig, Rat
Purification:	Purified from goat serum by ammonium sulphate precipitation followed by antigen affinity chromatography using the immunizing peptide.
Grade:	Verified

Target Details

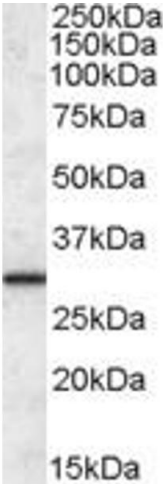
Target:	ERP29
Alternative Name:	ERP29 (ERP29 Products)
Background:	ERP29, endoplasmic reticulum protein 29, C12orf8, ERp28, ERp31, PDI-DB, endoplasmic reticulum lumenal protein ERp28
Gene ID:	10961, 67397, 117030
NCBI Accession:	NP_006808

Application Details

Application Notes:	Western Blot: Approx. 28 kDa band observed in Human Liver lysates (calculated MW of 29.0 kDa according to NP_006808.1). Recommended concentration: 0.1-0.3 µg/mL. Primary incubation was 1 hour. This product has been successfully used in WB on Rat: Gao J et al Peptide ELISA: antibody detection limit dilution 1:2000.
Comment:	Immunofluorescence: This product has been successfully used in IF on Rat: Gao J et al, Mol Med Rep. 2016 Jan,13(1):398-402. PMID: 26548430.
Restrictions:	For Research Use only

Handling

Format:	Liquid
Concentration:	0.5 mg/mL
Buffer:	Supplied at 0.5 mg/mL in Tris saline, 0.02 % sodium azide, pH 7.3 with 0.5 % bovine serum albumin.
Preservative:	Sodium azide
Precaution of Use:	This product contains Sodium azide: a POISONOUS AND HAZARDOUS SUBSTANCE which should be handled by trained staff only.
Handling Advice:	Minimize freezing and thawing.
Storage:	-20 °C
Storage Comment:	Aliquot and store at -20°C, with minimal freeze/thawing. A working aliquot may be refrigerated at 4°C for a few weeks and still remain viable.



Western Blotting

Image 1. ABIN308450 (0.1µg/ml) staining of Human Liver lysate (35µg protein in RIPA buffer). Detected by chemiluminescence.