

Datasheet for ABIN308455

anti-IMPDH2 antibody (Internal Region)[Go to Product page](#)**1** Image

Overview

Quantity:	100 µg
Target:	IMPDH2
Binding Specificity:	Internal Region
Reactivity:	Human
Host:	Goat
Clonality:	Polyclonal
Conjugate:	This IMPDH2 antibody is un-conjugated
Application:	Western Blotting (WB), ELISA

Product Details

Purpose:	IMPDH2
Immunogen:	Peptide with sequence KEEEHDCFLEEI, from the internal region of the protein sequence according to NP_000875.2.
Sequence:	KEEEHDCFLE EI
Isotype:	IgG
Cross-Reactivity:	Human
Purification:	Purified from goat serum by ammonium sulphate precipitation followed by antigen affinity chromatography using the immunizing peptide.
Grade:	Verified

Target Details

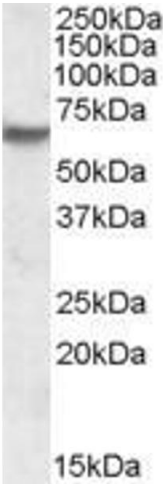
Target:	IMPDH2
Alternative Name:	IMPDH2 (IMPDH2 Products)
Background:	IMPDH2, IMP (inosine monophosphate) dehydrogenase 2, IMPD2, IMPDH-II, IMP dehydrogenase 2, IMP oxireductase 2, inosine 5' phosphate dehydrogenase 2, inosine monophosphate dehydrogenase 2, inosine monophosphate dehydrogenase type II, inosine monophosphate
Gene ID:	3615
NCBI Accession:	NP_000875
Pathways:	Ribonucleoside Biosynthetic Process , SARS-CoV-2 Protein Interactome

Application Details

Application Notes:	Western Blot: Approx. 60 kDa band observed in Human Skeletal Muscle lysates (calculated MW of 55.8 kDa according to NP_000875.2). Recommended concentration: 1-3 µg/mL. Peptide ELISA: antibody detection limit dilution 1:8000.
Restrictions:	For Research Use only

Handling

Format:	Liquid
Concentration:	0.5 mg/mL
Buffer:	Supplied at 0.5 mg/mL in Tris saline, 0.02 % sodium azide, pH 7.3 with 0.5 % bovine serum albumin.
Preservative:	Sodium azide
Precaution of Use:	This product contains Sodium azide: a POISONOUS AND HAZARDOUS SUBSTANCE which should be handled by trained staff only.
Handling Advice:	Minimize freezing and thawing.
Storage:	-20 °C
Storage Comment:	Aliquot and store at -20°C, with minimal freeze/thawing. A working aliquot may be refrigerated at 4°C for a few weeks and still remain viable.



Western Blotting

Image 1. ABIN308455 (1µg/ml) staining of Human Skeletal Muscle lysate (35µg protein in RIPA buffer). Primary incubation was 1 hour. Detected by chemiluminescence.