



[Go to Product page](#)

Datasheet for ABIN308463

## anti-**PLEKHB1** antibody (N-Term)

### 1 Image

#### Overview

Quantity:	100 µg
Target:	PLEKHB1
Binding Specificity:	N-Term
Reactivity:	Rat
Host:	Goat
Clonality:	Polyclonal
Conjugate:	This PLEKHB1 antibody is un-conjugated
Application:	Western Blotting (WB), ELISA

#### Product Details

Purpose:	PHR1
Immunogen:	Peptide with sequence PPDSALESPFEE-C, from the N Terminus of the protein sequence according to NP_067023.1, NP_001123506.1, NP_001123505.1, NP_001123507.1, NP_001123508.1,.
Sequence:	PPDSALESPF EE
Isotype:	IgG
Specificity:	This antibody is expected to recognize reported isoforms a (NP_067023.1) and c (NP_001123505.1).
Cross-Reactivity:	Cow, Human, Mouse, Rat
Purification:	Purified from goat serum by ammonium sulphate precipitation followed by antigen affinity

## Product Details

---

chromatography using the immunizing peptide.

Grade: Verified

## Target Details

---

Target: PLEKHB1

Alternative Name: PLEKHB1 ([PLEKHB1 Products](#))

Background: PLEKHB1, pleckstrin homology domain containing, family B (evectins) member 1, KPL1, PHR1, PHRET1, PH domain containing protein in retina 1, PH domain containing, retinal 1, evectin-1

Gene ID: 58473, 27276, 64471

NCBI Accession: [NP\\_067023](#), [NP\\_001123506](#), [NP\\_001123505](#), [NP\\_001123507](#), [NP\\_001123508](#)

## Application Details

---

Application Notes: Western Blot: Approx. 25 kDa band observed in Rat Brain lysates (calculated MW of 25.2 kDa according to Rat NP\_742030.1 (Evectin-1) and of 27.2 kDa according to Human NP\_067023.1).  
Recommended concentration: 1-3 µg/mL.  
Peptide ELISA: antibody detection limit dilution 1:16000.

Restrictions: For Research Use only

## Handling

---

Format: Liquid

Concentration: 0.5 mg/mL

Buffer: Supplied at 0.5 mg/mL in Tris saline, 0.02 % sodium azide, pH 7.3 with 0.5 % bovine serum albumin.

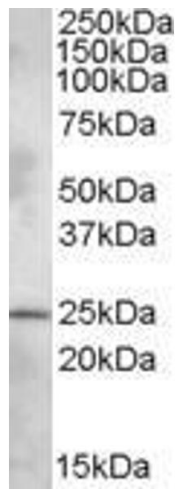
Preservative: Sodium azide

Precaution of Use: This product contains Sodium azide: a POISONOUS AND HAZARDOUS SUBSTANCE which should be handled by trained staff only.

Handling Advice: Minimize freezing and thawing.

Storage: -20 °C

Storage Comment: Aliquot and store at -20°C, with minimal freeze/thawing. A working aliquot may be refrigerated at 4°C for a few weeks and still remain viable.



### Western Blotting

**Image 1.** ABIN308463 (1µg/ml) staining of Rat Brain lysate (35µg protein in RIPA buffer). Primary incubation was 1 hour. Detected by chemiluminescence.