

Datasheet for ABIN308466

**anti-Peroxiredoxin 1 antibody (Internal Region)****3** Images[Go to Product page](#)

## Overview

Quantity:	100 µg
Target:	Peroxiredoxin 1 (PRDX1)
Binding Specificity:	Internal Region
Reactivity:	Human
Host:	Goat
Clonality:	Polyclonal
Conjugate:	This Peroxiredoxin 1 antibody is un-conjugated
Application:	Western Blotting (WB), Immunohistochemistry (IHC), ELISA

## Product Details

Purpose:	PRDX1
Immunogen:	C-SDPKRTIAQDYG
Sequence:	SDPKRTIAQD YG
Isotype:	IgG
Specificity:	Reported variants represent identical protein (NP_002565.1, NP_859047.1, NP_859048.1).
Cross-Reactivity:	Cow, Dog, Human, Mouse, Pig, Rat
Purification:	Purified from goat serum by ammonium sulphate precipitation followed by antigen affinity chromatography using the immunizing peptide.
Grade:	Verified

## Target Details

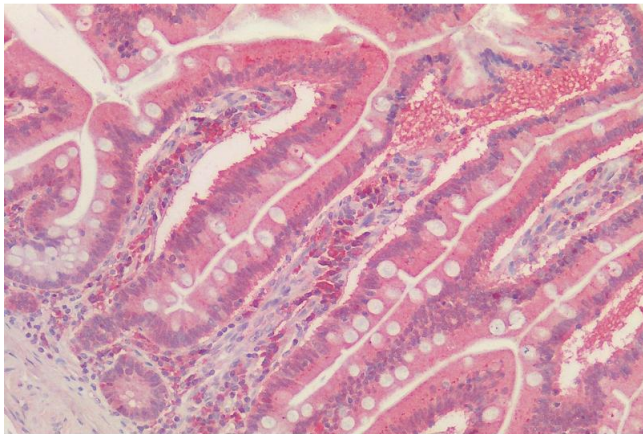
Target:	Peroxiredoxin 1 (PRDX1)
Alternative Name:	PRDX1 ( <a href="#">PRDX1 Products</a> )
Background:	PRDX1, peroxiredoxin 1, MSP23, NKEFA, PAG, PAGA, PAGB, PRX1, PRXI, TDPX2, natural killer-enhancing factor A, proliferation-associated gene A, thioredoxin-dependent peroxide reductase 2
Gene ID:	5052, 18477, 117254
NCBI Accession:	<a href="#">NP_859048</a>
Pathways:	<a href="#">p53 Signaling</a> , <a href="#">EGFR Signaling Pathway</a> , <a href="#">CXCR4-mediated Signaling Events</a>

## Application Details

Application Notes:	Immunohistochemistry: Paraffin embedded Human Small Intestine. Recommended concentration: 2.5 µg/mL. Western Blot: Approx 24 kDa band observed in lysates of cell line HEK293, A431 and HepG2 (calculated MW of 22.1 kDa according to NP_859048.1). Recommended concentration: 0.1-0.3 µg/mL. Peptide ELISA: antibody detection limit dilution 1:8000.
Restrictions:	For Research Use only

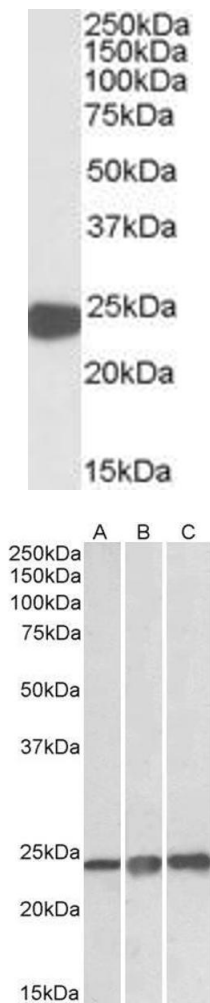
## Handling

Format:	Liquid
Concentration:	0.5 mg/mL
Buffer:	Supplied at 0.5 mg/mL in Tris saline, 0.02 % sodium azide, pH 7.3 with 0.5 % bovine serum albumin.
Preservative:	Sodium azide
Precaution of Use:	This product contains Sodium azide: a POISONOUS AND HAZARDOUS SUBSTANCE which should be handled by trained staff only.
Handling Advice:	Minimize freezing and thawing.
Storage:	-20 °C
Storage Comment:	Aliquot and store at -20°C, with minimal freeze/thawing. A working aliquot may be refrigerated at 4°C for a few weeks and still remain viable.



### Immunohistochemistry

**Image 1.** (ABIN308466) (2.5 µg/mL) staining of paraffin embedded Human Small Intestine. Steamed antigen retrieval with citrate buffer Ph 6, AP-staining.



**Image 2.** ABIN308466 (0.01 µg/ml) staining of HepG2 lysate (35 µg protein in RIPA buffer). Primary incubation was 1 hour. Detected by chemiluminescence.

### Western Blotting

**Image 3.** ABIN308466 (0.1 µg/ml) staining lysate of cell line HEK293 (A), A431 (B) and HepG2 (C) (35 µg protein in RIPA buffer). Primary incubation was 1 hour. Detected by chemiluminescence.