

Datasheet for ABIN308467

**anti-SIGLEC8 antibody (Internal Region)**[Go to Product page](#)**1** Image

## Overview

Quantity:	100 µg
Target:	SIGLEC8
Binding Specificity:	Internal Region
Reactivity:	Human
Host:	Goat
Clonality:	Polyclonal
Conjugate:	This SIGLEC8 antibody is un-conjugated
Application:	Western Blotting (WB), ELISA

## Product Details

Purpose:	SIGLEC8
Immunogen:	Peptide with sequence C-SYKSQLNYKTKQ, from the internal region of the protein sequence according to NP_055257.2.
Sequence:	SYKSQLNYKT KQ
Isotype:	IgG
Cross-Reactivity:	Human
Purification:	Purified from goat serum by ammonium sulphate precipitation followed by antigen affinity chromatography using the immunizing peptide.
Grade:	Verified

## Target Details

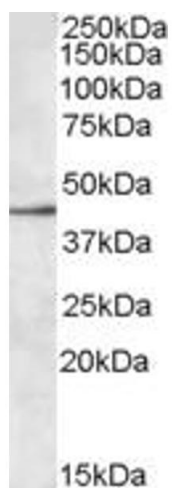
Target:	SIGLEC8
Alternative Name:	SIGLEC8 ( <a href="#">SIGLEC8 Products</a> )
Background:	SIGLEC8, sialic acid binding Ig-like lectin 8, MGC59785, SAF2, SIGLEC-8, SIGLEC8L
Gene ID:	27181
NCBI Accession:	<a href="#">NP_055257</a>

## Application Details

Application Notes:	Western Blot: Approx. 45 kDa band observed in lysates of cell line MOLT4 (calculated MW of 54.0 kDa according to NP_055257.2). The observed molecular weight corresponds to earlier findings in literature with different antibodies (Nutku et al, Blood. 2003 J Peptide ELISA: antibody detection limit dilution 1:32000.
Restrictions:	For Research Use only

## Handling

Format:	Liquid
Concentration:	0.5 mg/mL
Buffer:	Supplied at 0.5 mg/mL in Tris saline, 0.02 % sodium azide, pH 7.3 with 0.5 % bovine serum albumin.
Preservative:	Sodium azide
Precaution of Use:	This product contains Sodium azide: a POISONOUS AND HAZARDOUS SUBSTANCE which should be handled by trained staff only.
Handling Advice:	Minimize freezing and thawing.
Storage:	-20 °C
Storage Comment:	Aliquot and store at -20°C, with minimal freeze/thawing. A working aliquot may be refrigerated at 4°C for a few weeks and still remain viable.



**Image 1.** ABIN308467 (0.3µg/ml) staining of MOLT4 lysate (35µg protein in RIPA buffer). Primary incubation was 1 hour. Detected by chemiluminescence.