

Datasheet for ABIN3086341

**PRM2 Protein (AA 2-102) (His tag)**[Go to Product page](#)**2** Images

## Overview

Quantity:	1 mg
Target:	PRM2
Protein Characteristics:	AA 2-102
Origin:	Human
Source:	Insect Cells
Protein Type:	Recombinant
Purification tag / Conjugate:	This PRM2 protein is labelled with His tag.
Application:	ELISA, Western Blotting (WB), SDS-PAGE (SDS), Crystallization (Crys)

## Product Details

Sequence:	MVRYRVRSL S ERSHEVYRQQ LHGQEQGHHG QEEQGLSPEH VEVYERTHGQ SHYRRRHCSR RRLHRIHRRQ HRSCRRRKRR SCRHHRRHRR GCRTRKRTCR RHGSSGHHHH HH
Specificity:	C-terminal His-tag
Characteristics:	<ul style="list-style-type: none"><li>• Made in Germany - from design to production - by highly experienced protein experts.</li><li>• Human PRM2 Protein (raised in Insect Cells) purified by multi-step, protein-specific process to ensure crystallization grade.</li><li>• State-of-the-art algorithm used for plasmid design (Gene synthesis).</li></ul> <p>This made-to-order protein has already been successfully produced. Please let us know if you are interested in purchasing a smaller amount of this protein. We will check our stock and make you a customized quote in case we can provide this protein in a smaller amount..</p> <p>When you order this made-to-order protein you will only pay upon receipt of the correctly folded protein. With no financial risk on your end you can rest assured that our experienced</p>

## Product Details

protein experts will do everything to make sure that you receive the protein you ordered.

The concentration of our recombinant proteins is measured using the absorbance at 280nm.

The protein's absorbance will be measured in several dilutions and is measured against its specific reference buffer.

The concentration of the protein is calculated using its specific absorption coefficient. We use the Expasy's protparam tool to determine the absorption coefficient of each protein.

Purification:	Two step purification of proteins expressed in baculovirus infected SF9 insect cells:  1. In a first purification step, the protein is purified from the cleared cell lysate using three different His-tag capture materials: high yield, EDTA resistant, or DTT resistant. Eluate fractions are analyzed by SDS-PAGE.  2. Protein containing fractions of the best purification are subjected to second purification step through size exclusion chromatography. Eluate fractions are analyzed by SDS-PAGE and Western blot.
Purity:	>95 % as determined by SDS PAGE, Size Exclusion Chromatography and Western Blot.
Sterility:	0.22 µm filtered
Endotoxin Level:	Protein is endotoxin free.
Grade:	Crystallography grade

## Target Details

Target:	PRM2
Alternative Name:	PRM2 ( <a href="#">PRM2 Products</a> )
Background:	Protamines substitute for histones in the chromatin of sperm during the haploid phase of spermatogenesis. They compact sperm DNA into a highly condensed, stable and inactive complex.
Molecular Weight:	13.9 kDa Including tag.
UniProt:	<a href="#">P04554</a>

## Application Details

Application Notes:	In addition to the applications listed above we expect the protein to work for functional studies as well. As the protein has not been tested for functional studies yet we cannot offer a guarantee though.
Comment:	In cases in which it is highly likely that the recombinant protein with the default tag will be

Application Details

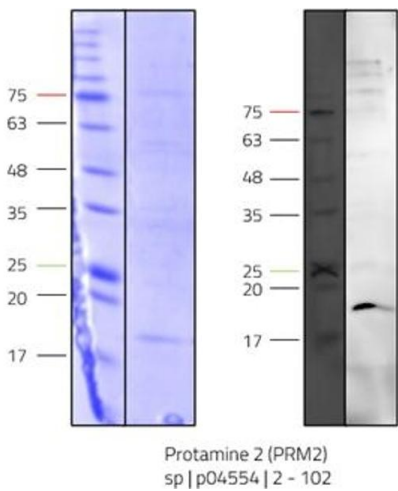
insoluble our protein lab may suggest a higher molecular weight tag (e.g. GST-tag) instead to increase solubility. We will discuss all possible options with you in detail to assure that you receive your protein of interest.

Restrictions: For Research Use only

Handling

Format:	Liquid
Buffer:	50 mM Tris, pH 7.4; 150 mM NaCl, 1 mM BME, 200 mM Arginin
Handling Advice:	Avoid repeated freeze-thaw cycles.
Storage:	-80 °C
Storage Comment:	Store at -80°C.
Expiry Date:	Unlimited (if stored properly)

Images



Western Blotting

Image 1.



**Image 2.** „Crystallography Grade“ protein due to multi-step, protein-specific purification process