

Datasheet for ABIN3086623

PROL1 Protein (AA 22-248) (His tag)**3** Images[Go to Product page](#)

Overview

Quantity:	1 mg
Target:	PROL1
Protein Characteristics:	AA 22-248
Origin:	Human
Source:	Insect Cells
Protein Type:	Recombinant
Purification tag / Conjugate:	This PROL1 protein is labelled with His tag.
Application:	ELISA, Western Blotting (WB), SDS-PAGE (SDS), Crystallization (Crys)

Product Details

Sequence: MQRFSRRPYL PGQLPPPLY RPRWVPPSPP PPYDSRLNSP LSLPFVPGRV PPSSFSRFSQ
AVILSQLFPL ESIRQRLFP GYPNLHFPLR PYYVGPIRIL KPPFPPIFF LAIYLPISNP EPQINITTAD
TTITNPPTT ATATTSTSTK PTMTISSSTV PISSTPEPAT SISAATPAAS TENTTQILAN
RPHTVLLNAT VQVTTSNQT I LSSPAFKSFW QKLFAIFG **HHHHHH**

Sequence including C-terminal His-tag.

- Characteristics:
- Made in Germany - from design to production - by highly experienced protein experts.
 - Human PROL1 Protein (raised in Insect Cells) purified by multi-step, protein-specific process to ensure crystallization grade.
 - State-of-the-art algorithm used for plasmid design (Gene synthesis).
 - Tag Location: C-terminal His Tag

The concentration of our recombinant proteins is measured using the absorbance at 280nm.

The protein's absorbance will be measured in several dilutions and is measured against its

Product Details

specific reference buffer.

The concentration of the protein is calculated using its specific absorption coefficient. We use the Expasy's protparam tool to determine the absorption coefficient of each protein.

Purification: The protein is purified from the cleared cell lysate using EDTA resistant His-tag capture materials. Eluate fractions are analyzed by SDS-PAGE. Protein containing fractions are subjected to a second purification step through size exclusion chromatography. Eluate fractions are analyzed by SDS-PAGE and Western blot.

Purity: >95 % as determined by SDS PAGE, Size Exclusion Chromatography and Western Blot.

Sterility: 0.22 µm filtered

Endotoxin Level: Protein is endotoxin-free.

Grade: Crystallography grade

Target Details

Target: PROL1

Alternative Name: PROL1 ([PROL1 Products](#))

Background: Opiorphin is an endogenous inhibitor of neprilysin and aminopeptidase N. Inhibits the breakdown of substance P, Mca-BK2 and Met-enkephalin by neprilysin in vitro with IC(50) values of 29 µM, 33 µM and 33 µM respectively. Inhibits the breakdown of Ala-pNA by aminopeptidase N in vitro with an IC(50) of 65 µM. Has a potent analgesic effect when administered to rats by intravenous injection. {ECO:0000269|PubMed:17101991}.

Molecular Weight: 24.9 kD. Including tag.

UniProt: [Q99935](#)

Application Details

Application Notes: In addition to the applications listed above we expect the protein to work for functional studies as well. As the protein has not been tested for functional studies yet we cannot offer a guarantee though.

Comment: In cases in which it is highly likely that the recombinant protein with the default tag will be insoluble our protein lab may suggest a higher molecular weight tag (e.g. GST-tag) instead to increase solubility. We will discuss all possible options with you in detail to assure that you receive your protein of interest.

Application Details

Restrictions: For Research Use only

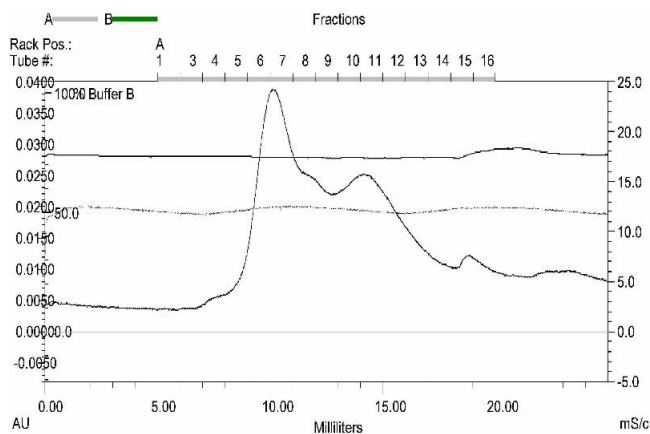
Handling

Format:	Liquid
Buffer:	100 mM NaCL, 20 mM Hepes, 10% glycerol. pH value is at the discretion of the manufacturer.
Handling Advice:	Avoid repeated freeze-thaw cycles.
Storage:	-80 °C
Storage Comment:	Store at -80°C.
Expiry Date:	Unlimited (if stored properly)

Images

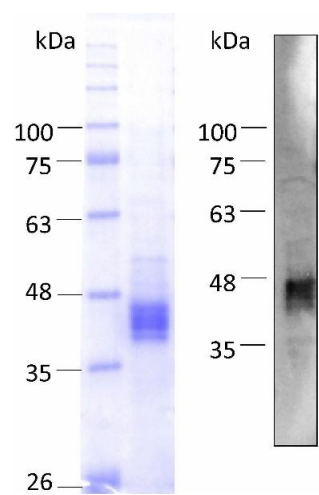


Image 1. „Crystallography Grade“ protein due to multi-step, protein-specific purification process



Size-exclusion chromatography-High Pressure Liquid Chromatography

Image 2.



Western Blotting

Image 3.