

Datasheet for ABIN3088334

CHRM3 Protein (AA 253-491) (Strep Tag,His tag)**3** Images**1** Publication[Go to Product page](#)

Overview

Quantity:	1 mg
Target:	CHRM3
Protein Characteristics:	AA 253-491
Origin:	Human
Source:	Insect Cells
Protein Type:	Recombinant
Purification tag / Conjugate:	This CHRM3 protein is labelled with Strep Tag,His tag.
Application:	SDS-PAGE (SDS), Western Blotting (WB), ELISA, Crystallization (Crys)

Product Details

Sequence:	MHHHHHHRIY KETEKRTKEL AGLQASGTEA ETENFVHPTG SSRSCSSYEL QQQSMKRSNR RKYG RCH FWFTTKSWKP SSEQMDQDHS SSDSWNNNDA AASLENSASS DEEDIGSETR AIYSIVLKLP GHSTILNSTK LPSSDNLQVP EEELGMVDLE RKADKLQAQK SVDDGGSFPK SFSKLPQLE SAVDTAKTSD VNSSVGKSTA TLPLSFKEAT LAKRFALKTR SQITKRKRMS LVKEKAAQGG SSGWSH PQFEK
-----------	--

Sequence includes N-terminal His-tag and C-terminal Strep-tag

Characteristics:	<ul style="list-style-type: none">• Made in Germany - from design to production - by highly experienced protein experts.• Human PLP1 Protein (raised in Insect Cells) purified by multi-step, protein-specific process to ensure crystallization grade.• State-of-the-art algorithm used for plasmid design (Gene synthesis).
------------------	---

The concentration of our recombinant proteins is measured using the absorbance at 280nm.

The protein's absorbance will be measured in several dilutions and is measured against its

Product Details

specific reference buffer.

The concentration of the protein is calculated using its specific absorption coefficient. We use the ExPASy's protparam tool to determine the absorption coefficient of each protein.

Purification: The protein is purified from the cleared cell lysate using Strep-tag capture materials. Eluate fractions are analyzed by SDS-PAGE. Protein containing fractions are subjected to a second purification step through size exclusion chromatography. Eluate fractions are analyzed by SDS-PAGE and Western blot.

Purity: >95 % as determined by SDS PAGE, Size Exclusion Chromatography and Western Blot.

Sterility: 0.22 µm filtered

Endotoxin Level: Endotoxin has not been removed. Please contact us if you require endotoxin removal.

Grade: Crystallography grade

Target Details

Target: CHRM3

Alternative Name: CHRM3 ([CHRM3 Products](#))

Background: The muscarinic acetylcholine receptor mediates various cellular responses, including inhibition of adenylate cyclase, breakdown of phosphoinositides and modulation of potassium channels through the action of G proteins. Primary transducing effect is Pi turnover.
{ECO:0000269|PubMed:7565628}.

Molecular Weight: 28.8 kDa including both tags

UniProt: [P20309](#)

Pathways: [Synaptic Membrane](#)

Application Details

Application Notes: In addition to the applications listed above we expect the protein to work for functional studies as well. As the protein has not been tested for functional studies yet we cannot offer a guarantee though.

Comment: In cases in which it is highly likely that the recombinant protein with the default tag will be insoluble our protein lab may suggest a higher molecular weight tag (e.g. GST-tag) instead to increase solubility. We will discuss all possible options with you in detail to assure that you receive your protein of interest.

Application Details

Restrictions: For Research Use only

Handling

Format: Liquid

Buffer: In solution (20 mM Hepes, pH 7.4, 100 mM NaCl)

Handling Advice: Avoid repeated freeze-thaw cycles.

Storage: -80 °C

Storage Comment: Store at -80°C.

Expiry Date: Unlimited (if stored properly)

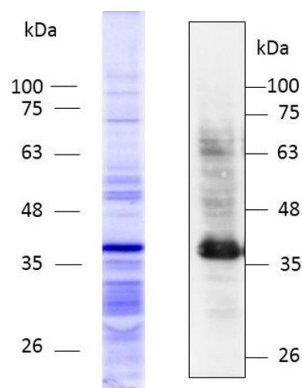
Publications

Product cited in: Chernyavsky, Amber, Agnoletti, Wang, Grando: "Synergy among non-desmoglein antibodies contributes to the immunopathology of desmoglein antibody-negative pemphigus vulgaris." in: **The Journal of biological chemistry**, Vol. 294, Issue 12, pp. 4520-4528, (2019) ([PubMed](#)).

Images

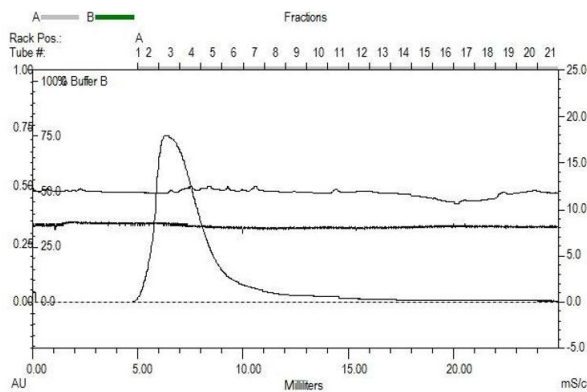


Image 1. „Crystallography Grade“ protein due to multi-step, protein-specific purification process



CHRM3 (AA 253 - 491),
fraction 3

Image 2.



CHRM3 (AA 253 - 491), gel filtration
Superdex 200; fraction 3collected

Image 3.