

Datasheet for ABIN3088913

ADGRE2 Protein (AA 24-540) (His tag)[Go to Product page](#)**1** Image

Overview

Quantity:	1 mg
Target:	ADGRE2
Protein Characteristics:	AA 24-540
Origin:	Human
Source:	Insect Cells
Protein Type:	Recombinant
Purification tag / Conjugate:	This ADGRE2 protein is labelled with His tag.
Application:	Crystallization (Crys), ELISA, SDS-PAGE (SDS), Western Blotting (WB)

Product Details

Sequence:	<p>MQDSRGCARW CPQDSSCVNA TACRCNPGFS SFSEIITTPM ETCDDINECA TLSKVSCGKF SDCWNTEGSY DCVCSPGYEP VSGAKTFKNE SENTCQDVDE CQQNPRLCKS YGTCVNTLGS YTCQCLPGFK LKPEDPKLCT DVNECTSGQN PCHSSTHCLN NVGSYQCRCR PGWQPIPGSP NGPNNTVCED VDECSSGQHQ CDSSTVCFNT VGSYSCRCRP GWKPRHGIPN NQKDTVCEM TFSTWTPPPG VHSQTLRFF DKVQDLGRDY KPGLANNTIQ SILQALDELL EAPGDLETLP RLQQHCVASH LLDGLEDVLR GLSKNLSNGL LNFSYPAGTE LSLEVQKQVD RSVTLRQNQA VMQLDWNQAQ KSGDPGPSVV GLVSIPGMGK LLAEAPLVLE PEKQMLLHET HQGLLDGSP ILLSDVISAF LSNNDTQNLSPVTFTFSHR SVIPRQKVL VFWEHGQNGC GHWATTGCST IGTRDTSTIC RCTHLSSFAV LMAHYDVQEE DPVLTIVITHH HHHH</p>
Specificity:	C-terminal His-tag
Characteristics:	<ul style="list-style-type: none">Made in Germany - from design to production - by highly experienced protein experts.

Product Details

- Human ADGRE2 Protein (raised in Insect Cells) purified by multi-step, protein-specific process to ensure crystallization grade.
- State-of-the-art algorithm used for plasmid design (Gene synthesis).

This made-to-order protein has already been successfully produced. Please let us know if you are interested in purchasing a smaller amount of this protein. We will check our stock and make you a customized quote in case we can provide this protein in a smaller amount..

When you order this made-to-order protein you will only pay upon receipt of the correctly folded protein. With no financial risk on your end you can rest assured that our experienced protein experts will do everything to make sure that you receive the protein you ordered.

The concentration of our recombinant proteins is measured using the absorbance at 280nm. The protein's absorbance will be measured in several dilutions and is measured against its specific reference buffer.

The concentration of the protein is calculated using its specific absorption coefficient. We use the ExPASy's protparam tool to determine the absorption coefficient of each protein.

Purification:	Two step purification of proteins expressed in baculovirus infected SF9 insect cells: 1. In a first purification step, the protein is purified from the cleared cell lysate using three different His-tag capture materials: high yield, EDTA resistant, or DTT resistant. Eluate fractions are analyzed by SDS-PAGE. 2. Protein containing fractions of the best purification are subjected to second purification step through size exclusion chromatography. Eluate fractions are analyzed by SDS-PAGE and Western blot.
Purity:	>95 % as determined by SDS PAGE, Size Exclusion Chromatography and Western Blot.
Sterility:	0.22 µm filtered
Endotoxin Level:	Protein is endotoxin free.
Grade:	Crystallography grade

Target Details

Target:	ADGRE2
Alternative Name:	ADGRE2 (ADGRE2 Products)
Background:	Cell surface receptor that binds to the chondroitin sulfate moiety of glycosaminoglycan chains and promotes cell attachment. Promotes granulocyte chemotaxis, degranulation and adhesion. In macrophages, promotes the release of inflammatory cytokines, including IL8 and TNF. Signals probably through G-proteins. {ECO:0000269 PubMed:12829604,

Target Details

ECO:0000269|PubMed:17928360, ECO:0000269|PubMed:22310662,
ECO:0000269|PubMed:22575658}.

Molecular Weight: 57.5 kDa Including tag.

UniProt: [Q9UHX3](#)

Application Details

Application Notes: In addition to the applications listed above we expect the protein to work for functional studies as well. As the protein has not been tested for functional studies yet we cannot offer a guarantee though.

Comment: In cases in which it is highly likely that the recombinant protein with the default tag will be insoluble our protein lab may suggest a higher molecular weight tag (e.g. GST-tag) instead to increase solubility. We will discuss all possible options with you in detail to assure that you receive your protein of interest.

Restrictions: For Research Use only

Handling

Format: Liquid

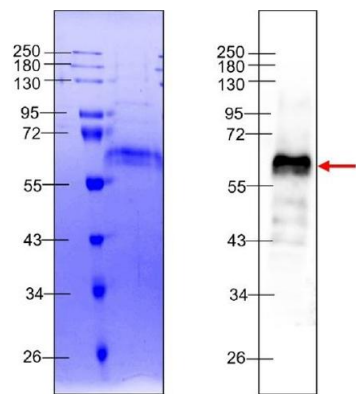
Buffer: 20 mM Hepes, pH 7.5; 150 mM NaCl; 1mM EDTA

Handling Advice: Avoid repeated freeze-thaw cycles.

Storage: -80 °C

Storage Comment: Store at -80°C.

Expiry Date: Unlimited (if stored properly)



[Adhesion G Protein-Coupled
Receptor E2][ADGRE2]
[AA 24-540], After Dialysis

Western Blotting

Image 1.