

## Datasheet for ABIN3089084 NPR3 Protein (AA 27-481) (His tag)

### 3 Images



[Go to Product page](#)

### Overview

|                               |  |
|-------------------------------|--|
| Quantity:                     | 1 mg   |
| Target:                       | NPR3   |
| Protein Characteristics:      | AA 27-481  |
| Origin:                       | Human  |
| Source:                       | Insect Cells   |
| Protein Type:                 | Recombinant  |
| Purification tag / Conjugate: | This NPR3 protein is labelled with His tag.                          |
| Application:                  | Western Blotting (WB), SDS-PAGE (SDS), ELISA, Crystallization (Crys) |

### Product Details

|                  |  |
|------------------|--|
| Sequence:        | <p><b>MPSLLVLTFS PCVLLGWALL AGGTGGGGVG GGGGGAGIGG GRQEREALPP QKIEVLVLLP</b></p> <p>QDDSYLFSLT RVRPAIEYAL RSVEGNGTGR RLLPPGTRFQ VAYEDSDCGN RALFSLVDRV</p> <p>AAARGAKPDL ILGPVCEYAA APVARLASHW DLPMLSAGAL AAGFQHKDSE YSHLTRVAPA</p> <p>YAKMGEMMLA LFRHHHWSRA ALVYSDDKLE RNCYFTLEGV HEVFQEEGLH TSIYSFDETK</p> <p>DLDLEDIVRN IQASERVVIM CASSDTIRSI MLVAHRHGMT SGDYAFFNIE LFNSSSYGDG</p> <p>SWKRGDKHDF EAKQAYSSLQ TVTLLRTVKP EFEKFSMEVK SSVEKQGLNM EDYVNMFVEG</p> <p>FHDAILLYVL ALHEVLRAGY SKKDGGKIIQ QTWNRTFEGI AGQVSIDANG DRYGDFS VIA</p> <p>MTDVEAGTQE VIGDYFGKEG RFEMRPNVKY PWGPLKLRLD ENRIVEHTNS SPCKSSGGLE</p> <p>EHHHHHH (signal peptide cleaved during secretion)</p> |
| Characteristics: | <ul style="list-style-type: none"> <li>Made in Germany - from design to production - by highly experienced protein experts.</li> <li>Human NPR3 Protein (raised in Insect Cells) purified by multi-step, protein-specific process to ensure crystallization grade.</li> </ul>  |

## Product Details

- State-of-the-art algorithm used for plasmid design (Gene synthesis).

This made-to-order protein has already been successfully produced. Please let us know if you are interested in purchasing a smaller amount of this protein. We will check our stock and make you a customized quote in case we can provide this protein in a smaller amount.

When you order this made-to-order protein you will only pay upon receipt of the correctly folded protein. With no financial risk on your end you can rest assured that our experienced protein experts will do everything to make sure that you receive the protein you ordered.

The concentration of our recombinant proteins is measured using the absorbance at 280nm.

The protein's absorbance will be measured in several dilutions and is measured against its specific reference buffer.

The concentration of the protein is calculated using its specific absorption coefficient. We use the ExPASy's protparam tool to determine the absorption coefficient of each protein.

|                  |   |
|------------------|---|
| Purification:    | Two step purification of proteins expressed in baculovirus infected SF9 insect cells:<br><br>1. In a first purification step, the protein is purified from the cleared cell lysate using three different His-tag capture materials: high yield, EDTA resistant, or DTT resistant. Eluate fractions are analyzed by SDS-PAGE.<br><br>2. Protein containing fractions of the best purification are subjected to second purification step through size exclusion chromatography. Eluate fractions are analyzed by SDS-PAGE and Western blot. |
| Purity:          | >95 % as determined by SDS PAGE, Size Exclusion Chromatography and Western Blot.  |
| Sterility:       | 0.22 µm filtered  |
| Endotoxin Level: | Protein is endotoxin free.  |
| Grade:           | Crystallography grade   |

## Target Details

|                   |   |
|-------------------|---|
| Target:           | NPR3  |
| Alternative Name: | NPR3 ( <a href="#">NPR3 Products</a> )  |
| Background:       | Receptor for the natriuretic peptide hormones, binding with similar affinities atrial natriuretic peptide NPPA/ANP, brain natriuretic peptide NPPB/BNP, and C-type natriuretic peptide NPPC/CNP. May function as a clearance receptor for NPPA, NPPB and NPPC, regulating their local concentrations and effects. May regulate diuresis, blood pressure and skeletal development. Does not have guanylate cyclase activity. |
| Molecular Weight: | 51.4 kDa Including tag.   |

## Target Details

|           |  |
|-----------|--|
| UniProt:  | <a href="#">P17342</a>                 |
| Pathways: | <a href="#">cAMP Metabolic Process</a> |

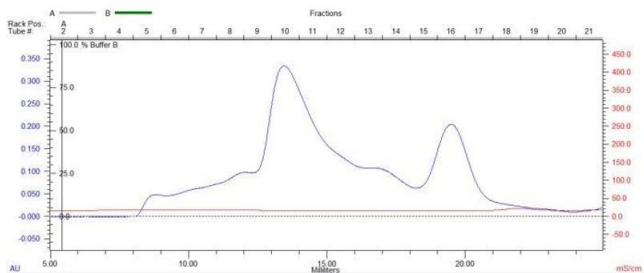
## Application Details

|                    |   |
|--------------------|---|
| Application Notes: | In addition to the applications listed above we expect the protein to work for functional studies as well. As the protein has not been tested for functional studies yet we cannot offer a guarantee though.  |
| Comment:           | In cases in which it is highly likely that the recombinant protein with the default tag will be insoluble our protein lab may suggest a higher molecular weight tag (e.g. GST-tag) instead to increase solubility. We will discuss all possible options with you in detail to assure that you receive your protein of interest. |
| Restrictions:      | For Research Use only   |

## Handling

|                  |  |
|------------------|--|
| Format:          | Liquid                                       |
| Buffer:          | in solution (10mM Hepes, pH7.2, 100 mM NaCl) |
| Handling Advice: | Avoid repeated freeze-thaw cycles.           |
| Storage:         | -80 °C                                       |
| Storage Comment: | Store at -80°C.                              |
| Expiry Date:     | Unlimited (if stored properly)               |

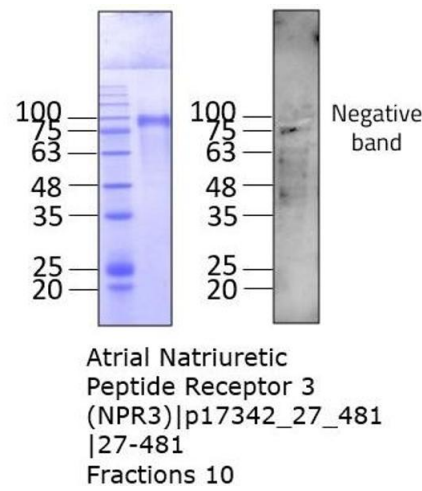
## Images



Atrial Natriuretic Peptide Receptor 3  
(NPR3)|p17342\_27\_481|27-481  
gel filtration,  
Superdex 200 fraction 10

Size-exclusion chromatography-High Pressure Liquid Chromatography

Image 1.



**Image 2.** „Crystallography Grade“ protein due to multi-step, protein-specific purification process

**Western Blotting**

**Image 3.**