

Datasheet for ABIN3089703
BCLAF1 Protein (AA 1-920) (Strep Tag)

2 Images



[Go to Product page](#)

Overview

Quantity:	1 mg
Target:	BCLAF1
Protein Characteristics:	AA 1-920
Origin:	Human
Source:	Tobacco (Nicotiana tabacum)
Protein Type:	Recombinant
Purification tag / Conjugate:	This BCLAF1 protein is labelled with Strep Tag.
Application:	ELISA, SDS-PAGE (SDS), Western Blotting (WB)

Product Details

Sequence:	MGRSNSRSHS SRSKSRSQSS SRSRSRSHSR KKRYSSRSRS RTYSRSRSRD RMYSRDYRRD YRNNRGMRRP YGYRGRGRGY YQGGGGRYHR GGYRPVWNRR HSRSPRRGRS RSRSPKRRSV SSQSRSRSR RSYRSSRSPR SSSSRSSSPY SKSPVSKRRG SQEKQTKKAE GEPQEEPLK SKSQEEPKDT FEHDPSESID EFNKSSATSG DIWPGLSAYD NSPRSPHSPS PIATPPSQSS SCSDAPMLST VHSKNTPSQ HSHSIQHSPE RSGSGSVGNG SSRYSPSQNS PIHHIPSRRS PAKTIAPQNA PRDESRGRSS FYPDGGDQET AKTGKFLKRF TDEESRVFLL DRGNTRDKEA SKEKGSEKGR AEGEWEDQEA LDYFSDKESG KQKFNDSEGD DTEETEDYRQ FRKSVLADQG KSFATASHRN TEEEGLYKYS KVS LKGNRES DGFREEKNYK LKETGYVVER PSTTKDKHKE EDKNSERITV KKETQSPEQV KSEKLKDLFD YSPPLHKNLD AREKSTFREE SPLRIKMIAS DSHRPEVKLK MAPVPLDDSN RPASLTKDRL LASTLVHSVK KEQEFRSIFD HIKLPQASKS TSEFIQHIV SLVHHVKEQY FKSAAMTLNE RFTSYQKATE EHSTRQKSPE IHRRIDISPS TLRKHTRLAG EERVFKEENQ KGDKKLRCDS ADLRHDIDRR RKERSKERGD SKGSRESSGS
-----------	---

RKQEKTPKDY KEYKSYKDDS KHKREQDHSR SSSSSASPSS PSSREEKESK KEREFEFKTH
HEMKEYSGFA GVSRRPGTFF RIRGRGRARG VFAGTNTGPN NSNTTFQKRP KEEWDPEYT
PKSKKYFLHD DRDDGVYWA KRGRGRGTFF RGRGRFNFKK SGSSPKWTHD KYQGDGIVED
EETMENNEE KKDRRKEEKE

Sequence without tag. The proposed Strep-Tag is based on experience s with the expression system, a different complexity of the protein could make another tag necessary. In case you have a special request, please contact us.

Characteristics:

Key Benefits:

- Made in Germany - from design to production - by highly experienced protein experts.
- Protein expressed with ALiCE® and purified by multi-step, protein-specific process to ensure correct folding and modification.
- These proteins are normally active (enzymatically functional) as our customers have reported (not tested by us and not guaranteed).
- State-of-the-art algorithm used for plasmid design (Gene synthesis).

This protein is a **made-to-order protein** and will be made for the first time for your order. Our experts in the lab will ensure that you receive a correctly folded protein.

The big advantage of ordering our **made-to-order proteins** in comparison to ordering custom made proteins from other companies is that there is no financial obligation in case the protein cannot be expressed or purified.

Expression System:

- ALiCE®, our Almost Living Cell-Free Expression System is based on a lysate obtained from *Nicotiana tabacum* c.v.. This contains all the protein expression machinery needed to produce even the most difficult-to-express proteins, including those that require post-translational modifications.
- During lysate production, the cell wall and other cellular components that are not required for protein production are removed, leaving only the protein production machinery and the mitochondria to drive the reaction. During our lysate completion steps, the additional components needed for protein production (amino acids, cofactors, etc.) are added to produce something that functions like a cell, but without the constraints of a living system - all that's needed is the DNA that codes for the desired protein!

Concentration:

- The concentration of our recombinant proteins is measured using the absorbance at 280nm.
- The protein's absorbance will be measured in several dilutions and is measured against its specific reference buffer.

Product Details

- We use the ExPASy's ProtParam tool to determine the absorption coefficient of each protein.

Purification:	Two step purification of proteins expressed in Almost Living Cell-Free Expression System (ALiCE®): 1. In a first purification step, the protein is purified from the cleared cell lysate using StrepTag capture material. Eluate fractions are analyzed by SDS-PAGE. 2. Protein containing fractions of the best purification are subjected to second purification step through size exclusion chromatography. Eluate fractions are analyzed by SDS-PAGE and Western blot.
Purity:	>80 % as determined by SDS PAGE, Size Exclusion Chromatography and Western Blot.
Endotoxin Level:	Low Endotoxin less than 1 EU/mg (< 0.1 ng/mg)
Grade:	Crystallography grade

Target Details

Target:	BCLAF1
Alternative Name:	BCLAF1 (BCLAF1 Products)
Background:	Bcl-2-associated transcription factor 1 (Btf) (BCLAF1 and THRAP3 family member 1),FUNCTION: Death-promoting transcriptional repressor. May be involved in cyclin-D1/CCND1 mRNA stability through the SNARP complex which associates with both the 3'end of the CCND1 gene and its mRNA. {ECO:0000269 PubMed:18794151}.
Molecular Weight:	106.1 kDa
UniProt:	Q9NYF8
Pathways:	Positive Regulation of Response to DNA Damage Stimulus

Application Details

Application Notes:	In addition to the applications listed above we expect the protein to work for functional studies as well. As the protein has not been tested for functional studies yet we cannot offer a guarantee though.
Comment:	ALiCE®, our Almost Living Cell-Free Expression System is based on a lysate obtained from Nicotiana tabacum c.v.. This contains all the protein expression machinery needed to produce even the most difficult-to-express proteins, including those that require post-translational

Application Details

modifications.

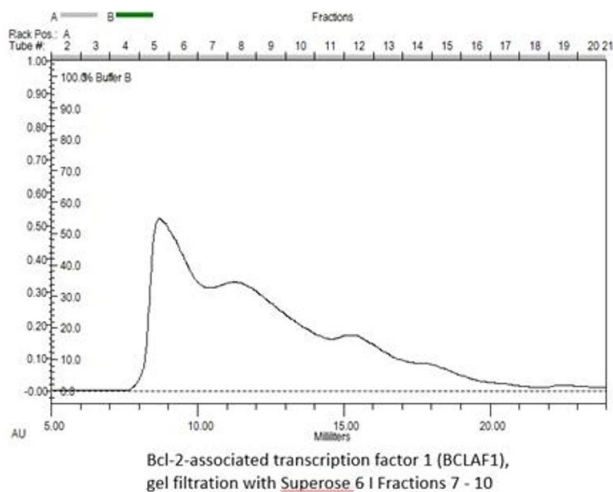
During lysate production, the cell wall and other cellular components that are not required for protein production are removed, leaving only the protein production machinery and the mitochondria to drive the reaction. During our lysate completion steps, the additional components needed for protein production (amino acids, cofactors, etc.) are added to produce something that functions like a cell, but without the constraints of a living system - all that's needed is the DNA that codes for the desired protein!

Restrictions: For Research Use only

Handling

Format:	Liquid
Buffer:	The buffer composition is at the discretion of the manufacturer. If you have a special request, please contact us.
Handling Advice:	Avoid repeated freeze-thaw cycles.
Storage:	-80 °C
Storage Comment:	Store at -80°C.
Expiry Date:	Unlimited (if stored properly)

Images



Size-exclusion chromatography-High Pressure Liquid Chromatography

Image 1.



Image 2. „Crystallography Grade“ protein due to multi-step, protein-specific purification process